



# STATE SYSTEMIC IMPROVEMENT PLAN (SSIP) NEWSLETTER

Newsletter June 2017 | Issue 5

Over the past several months, the state has continued to create a foundation for the implementation of the SSIP. Additionally, we recently completed an evaluation of the implementation of SSIP activities over the past year.

Inside this issue you will find more information on our SSIP evaluation and our ongoing focus to increase the percentage of infants and toddlers with disabilities who leave the program with progress made in social-emotional development.

Activities to support infrastructure development and the building of system capacity in our focus area include:

- ✓ Regional planning
- ✓ Stakeholder workgroups
- ✓ Identifying practices to build on
- ✓ Addressing barriers

## Implementation and Evaluation

Utilizing stakeholder feedback, the SSIP State Team spent the last quarter reviewing and revising our improvement plan.

Through the evaluation of our implementation plan, the state identified the following accomplishments:

- Identified current Early Childhood Outcomes (ECO) entry/exit assessments used by regional staff
- Reviewed practices; identified opportunities to strengthen ECO processes
- Implemented a new QA/QI monitoring system

In addition to accomplishments, the state identified barriers to the implementation of Idaho's SSIP.

These barriers included:

- Tight resources to complete new improvement activities.
- Potential operational changes could create significant disruptions to already large caseloads.
- The geography of the state makes connecting with staff to complete implementation activities challenging.
- Working on multiple areas of the SSIP simultaneously was not effective in making sustained progress towards the plan.

### INSIDE THIS ISSUE

<b>IMPLEMENTATION AND EVALUATION</b>	<b>1</b>
<b>UPDATED PRIORITIES</b>	<b>2</b>
<b>WHO IS GUIDING THIS WORK</b>	<b>2</b>
<b>TIMELINES</b>	<b>3</b>
<b>WORKGROUP ACTIVITY</b>	<b>3</b>
<b>HOW TO STAY INFORMED</b>	<b>3</b>
<b>SSIP STATE TEAM MEMBERS</b>	<b>3</b>
<b>ADDITIONAL RESOURCES</b>	<b>3</b>



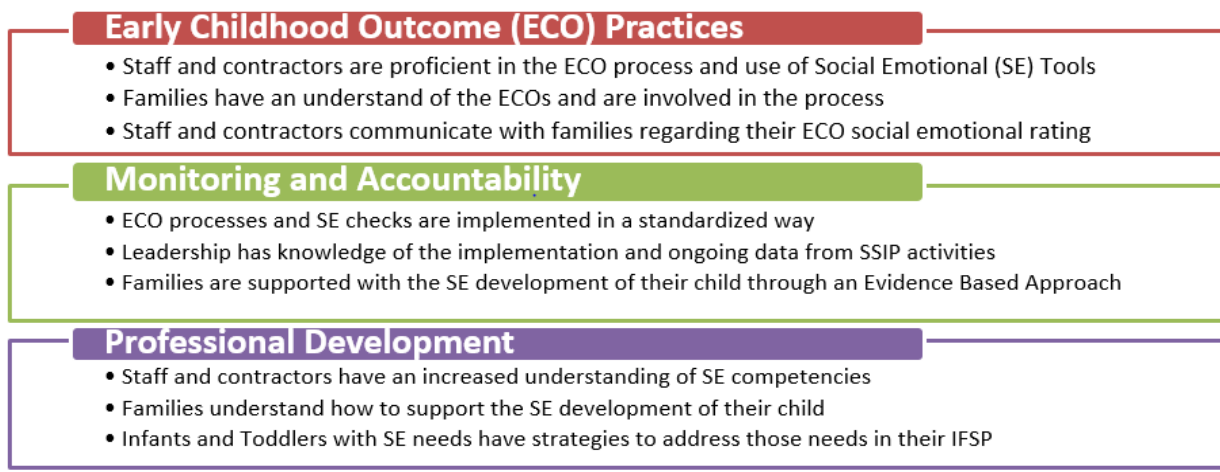
# Updated Priorities

Based on the evaluation of progress, the State SSIP Team took action to address the identified barriers by focusing on embedding activities into current infrastructures rather than creating new systems.

These actions included:

- Adjusting SSIP tasks and timelines so that SSIP areas are not worked on simultaneously; therefore, reducing impact on staff.
- Adjusting SSIP tasks and timelines so that workgroup involvement will only require 2-4 hours per month.
- Using technology such as Video Conferencing Equipment and SharePoint when possible to mitigate impact of geography.
- Looking for efficiencies with data tracking to best use the time of our data analyst.

Below is a chart identifying the state's updated list of activities by strategy area:



## Who is Guiding this Work

SSIP activities are supported by 5 important teams. These teams are responsible to manage, guide and implement all tasks included in the state's improvement plan. These teams are responsible for the following:

- ✓ **State Leadership Team** – Managing activities and timelines, disseminating information, informing groups of opportunities to participate in SSIP activities. Membership includes Central Office Staff.
- ✓ **Demonstration Sites** –Implementing SSIP activities in Demonstration Sites. Membership includes Region 1, 2, 3 Supervisors/Specialists.
- ✓ **Exploration Team** – Guiding output development related to the SSIP (i.e. training, family materials, review of current processes etc...). Membership includes Central Office, Statewide Supervisors, Direct Staff, IPUL, and BSU.
- ✓ **Exploration Team Workgroups** – Completing outputs for review based on the Exploration Team's guidance. Membership includes Exploration Team members and additional direct staff.
- ✓ **Infant Toddler Coordinating Committee** – Assisting the State Leadership Team in the evaluation of Improvement Strategy Implementation and intended outcomes. Assisting in the identification of barriers and recommend actions to address those barriers. Membership includes Federal Accountability Committee members.



# Timelines

Over the next 6 months, we will continue with SSIP implementation and evaluation activities. Our primary focus will be the completion of tasks related to ECOs.

Additionally, members of the SSIP State Team will continue to work with the Early Intervention Evidence Based Workgroup to coordinate activities and identify opportunities for the two projects to work together.

For a complete report on implementation activities, evaluation of progress and timelines, please view Idaho’s Annual Performance Report (APR) Indicator 11, FFY 2015 at [www.infanttoddler.idaho.gov](http://www.infanttoddler.idaho.gov).

April	May	June	July	Aug	Sept	Oct	Nov	Dec
		Develop ECO Process Fidelity Check						
Identify or develop training/resources on how to complete ECO ratings								
Develop ECO family materials								
				Deliver ECO training				
					Review, evaluate and select SE tools			
						Develop training/ resources to enhance understanding of SE ECOs		
Coordinate with EI EBP on how to embed SE competencies								

## Workgroup Activity

The State SSIP Team has convened the Exploration Team to assist with identifying and developing standardized resources for staff, contractors and families. Over the upcoming months, The Exploration Team and associated workgroups will work on modifying processes, creating outputs and recommending training requirements.

In addition, the State SSIP Team will start to meet with Idaho Infant Toddler Coordinating Committee (ITCC) members. The ITCC’s newly formed Federal Accountability Committee, will assist the state in evaluation activities, the review of completed outputs and the identification of any barriers to the project.

## How to Stay Informed

Visit the Infant Toddler Program SharePoint Site, State Systemic Improvement Plan (SSIP) page for up-to-date information regarding the project at: <http://sharepoint/sites/facs/itp/ssip/SitePages/Home.aspx>

If you do not have access to SharePoint, notify your supervisor and they can share the information with you. Families and stakeholders can visit the Infant Toddler Program Website at: [www.infanttoddler.idaho.gov](http://www.infanttoddler.idaho.gov).

## SSIP State Team Members

- Christy Cronheim, ITP Policy Manager
- Chad Cardwell, ITP Operations Manager
- Anna Smith, ITP Program Specialist
- Valerie Steffen, FACS Research Analyst



- Stephanie Perry, ITP Policy Specialist
- Melaine Shephard, ITP Policy Specialist
- Sue Harpold, ITP Policy Specialist

For questions or additional information, contact Donna McNearney at [McNearND@dhw.idaho.gov](mailto:McNearND@dhw.idaho.gov) or 208-334-4965.

## Additional Resources

- AIM Early Idaho: [www.aimearlyidaho.org](http://www.aimearlyidaho.org)
- ECTA Center: [A Guide to the Implementation Process: Stages, Steps, and Activities](#)
- The Family, Infant, and Preschool Program (FIPP): <http://fipp.org>

