



# STATE SYSTEMIC IMPROVEMENT PLAN (SSIP) NEWSLETTER

Newsletter July 2015 | Issue 1

## Introduction

The SSIP Newsletter is intended to summarize key information for Infant Toddler Program (ITP) staff and contractors, as well as families interested in learning about new initiatives related to improving social-emotional outcomes for infants and toddlers in Idaho.

This quarterly newsletter will keep you current on events, and resources are provided at the end of each issue if you wish to learn more about a specific topic.

### INSIDE THIS ISSUE

- ACCOMPLISHMENTS TO DATE.....2
- STATE-IDENTIFIED MEASURABLE RESULT....2
- SSIP IMPROVEMENT STRATEGIES.....2
- WHAT THE SSIP MEANS FOR YOU.....3
- WHAT'S NEXT?.....3
- DEMONSTRATION SITES.....4
- HOW TO STAY INFORMED.....4
- SSIP STATE TEAM MEMBERS.....4
- ADDITIONAL RESOURCES.....4

## What is the SSIP?

The State Systemic Improvement Plan (SSIP) is a new quality initiative introduced by the Office of Special Education Programs (OSEP). It is a multi-year, achievable plan that:

- Increases capacity of Early Intervention Programs to implement, scale up, and sustain evidence-based practices
- Improves outcomes for children with special needs and their families



The SSIP is an exciting opportunity for the Idaho Infant Toddler Program to explore our current system, and determine how to make it operate more efficiently and effectively in order to achieve the best outcomes for the children and families we serve.

Our federal partners and technical assistance centers are dedicating the bulk of their resources to assist states with the SSIP process. Idaho has a phenomenal team of experts available to assist us with questions and provide guidance on evidence-based practices

and useful tools.

## SSIP Timeline 2014 - 2020

Year 1 - FFY 2013 Delivered by April 1, 2015	Year 2 - FFY 2014 Delivery by April 2016	Years 3-6, FFY 2015-18 Delivery by Feb 2017- Feb 2020
<b>Phase I – Analysis</b> <b>COMPLETE</b>	<b>Phase II - Development</b>	<b>Phase III – Evaluation and Implementation</b>
<ul style="list-style-type: none"> <li>• Data Analysis;</li> <li>• Description of Infrastructure to Support Improvement and Build Capacity;</li> <li>• State-identified Measurable Result</li> <li>• Selection of Coherent Improvement Strategies;</li> <li>• Theory of Action</li> </ul>	Multi-year plan addressing: <ul style="list-style-type: none"> <li>• Infrastructure Development;</li> <li>• Support EIS Program/Providers in Implementing Evidence-Based Practices;</li> <li>• Evaluation Plan</li> </ul>	Reporting on Progress including: <ul style="list-style-type: none"> <li>• Results of Ongoing Evaluation</li> <li>• Extent of Progress</li> </ul> Revisions to the SPP

# Accomplishments to Date



- Completed SSIP Phase I – Analysis
- Submitted SSIP Phase I to OSEP in March 2015
- Identified the State-identified Measurable Result (SiMR)
- Developed Improvement Strategies
- Surveyed all ITP staff and contractors to learn about strengths and opportunities for system improvement
- Selected pilot regions to implement activities, also called “Demonstration Sites”

## State-identified Measurable Result (SiMR)

For Phase I of the SSIP, the Infant Toddler Program State Team met with key stakeholders to determine which of the child outcomes should be the focus for improvement over the next several years. This focus area is called the State-identified Measurable Result, or SiMR.

After a thorough analysis of ITP’s data and infrastructure, stakeholders determined that Idaho’s SiMR should focus on improving “Positive Social Emotional Outcomes”. While the other two outcomes, “Acquisition of Knowledge and Skills” and “Use of Appropriate Behaviors” are just as important, the consensus is that social –emotional skills are the foundation of a child’s development.

Targeting improvements in social-emotional development will make the greatest impact on all three of the child outcomes.

**SiMR**  
**To increase the percentage of infants and toddlers with disabilities who leave the program with progress made in social-emotional development.**

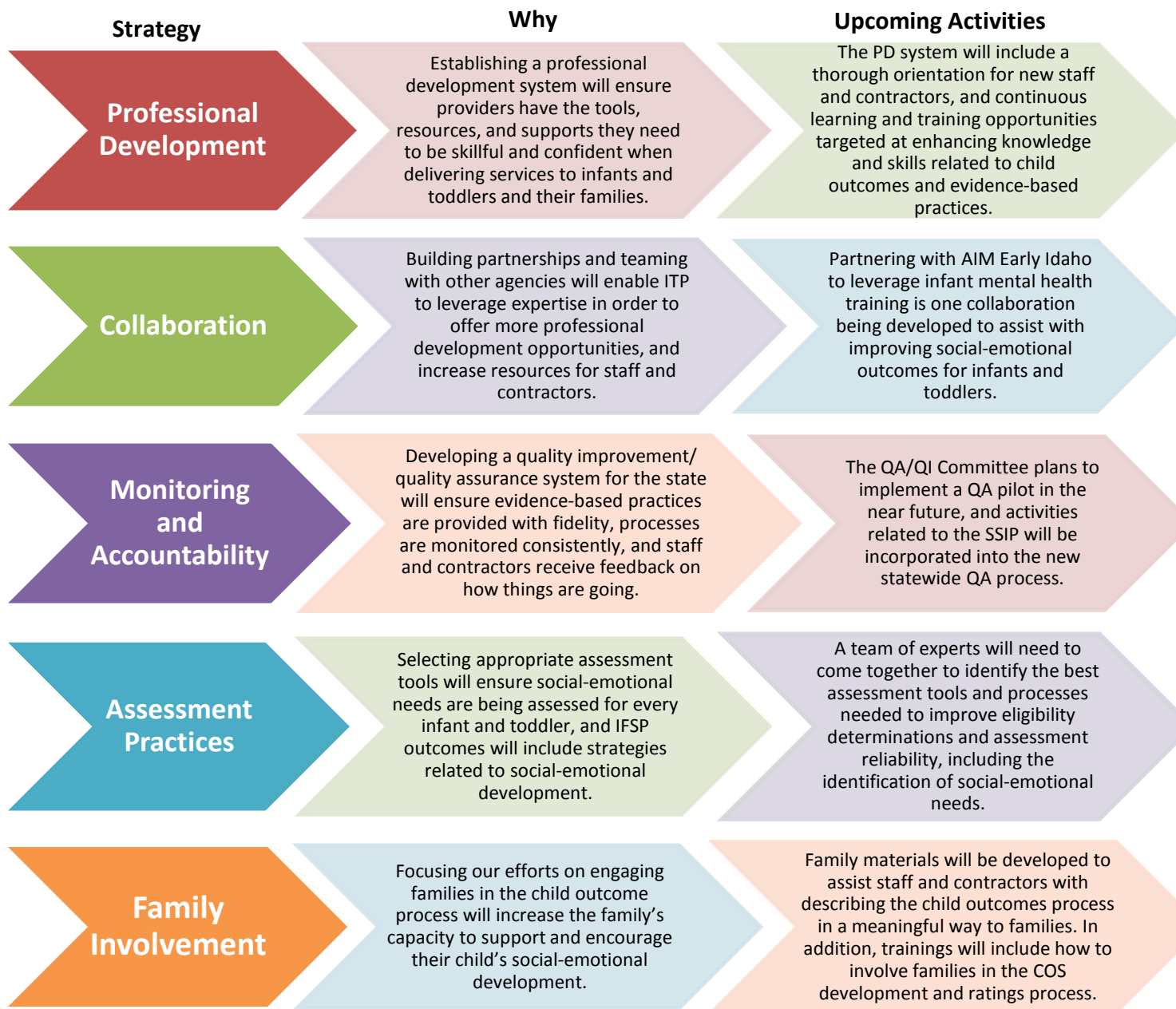
## SSIP Improvement Strategies

Stakeholders identified the following improvement strategies needed to improve social-emotional outcomes for infant and toddlers served by the Infant Toddler Program:

- **Professional Development** - Develop a statewide structure that supports the implementation of a standardized, sustainable professional development system for ITP staff and contractors
- **Collaboration** - Build collaboration with other partner agencies to offer joint professional development opportunities, and encourage clinical teaming related to social-emotional development needs
- **Monitoring and Accountability** - Establish a statewide quality improvement and assurance system that reviews, monitors, and enhances early intervention evidence-based practices and COS ratings
- **Assessment Practices** - Research and identify appropriate functional assessment tools for ITP staff and contractors to use to identify social-emotional needs for infants and toddlers
- **Family Involvement** - Develop a process to increase family involvement in supporting social-emotional development



# What the SSIP Means for You



## What's Next?

Phase II involves developing an Implementation Plan based on our improvement strategies. The implementation plan will address:

- Communication and dissemination
- Training and Technical Assistance
- Planned improvements in organizational structures, data, and system supports

- Evaluation activities
- Activities that address expansion and sustainability

The implementation plan is due to OSEP in April 2016. A plan will be developed at the state-level, as well as at the regional level for each Demonstration Site.

# Demonstration Sites

Regions 1, 2, and 3 were selected as the pilot programs, or demonstration sites, for the SSIP. The State Team will be visiting these regions in August 2015 to interview staff, contractors, and hub leaders to determine how we can build system capacity to support improvements in our practices.

The role of the Demonstration Sites is to oversee the implementation process, build communication and feedback loops, prepare trainers/coaches, and develop a site plan for putting practices in place.

In addition to the demonstration site activities, the State Team will be reaching out to all regions and other stakeholders through survey tools, interviews, and workgroups in order to utilize our experts when building the professional development system and enhancing our child outcome practices.

The Demonstration Sites are expected to begin implementing activities in 2016, and by 2020 it is anticipated that all regions will have activities fully implemented.

# How to Stay Informed

Visit the Infant Toddler Program SharePoint Site, State Systemic Improvement Plan (SSIP) page for up-to-date information regarding the project at <http://sharepoint/sites/facs/itp/ssip/SitePages/Home.aspx>.

If you do not have access to the SharePoint Site, notify your supervisor and they can share the information with you.

In addition, families and stakeholders can visit the Infant Toddler Program Website to read this “Quarterly SSIP Newsletter” at [www.infanttoddler.idaho.gov](http://www.infanttoddler.idaho.gov).



# SSIP State Team Members

Lauren Ertz, ITP Policy Specialist; SSIP Lead

Melaine Shephard, ITP Policy Specialist

Christy Cronheim, ITP Policy Manager



Chad Cardwell, ITP Operations Manager

Anna Smith, ITP Program Specialist

Jennifer Surrusco, FACS Research Analyst

For questions or additional information, contact Donna McNearney at [McNearD@dhw.idaho.gov](mailto:McNearD@dhw.idaho.gov) or 208-334-4965.

# Additional Resources

The Early Childhood Technical Assistance Center (ECTA) Website –

- Outcomes Measurement Page: <http://ectacenter.org/eco/>
- SSIP Page: <http://ectacenter.org/topics/ssip/ssip.asp>

