

# SKIN CANCER IDAHO 2018

## SKIN CANCER

is the most common cancer in the U.S.

**INCIDENCE OF MELANOMA** over the last 5 years has increased.

**INCIDENCE & MORTALITY** rates of melanoma in Idaho are higher in males.

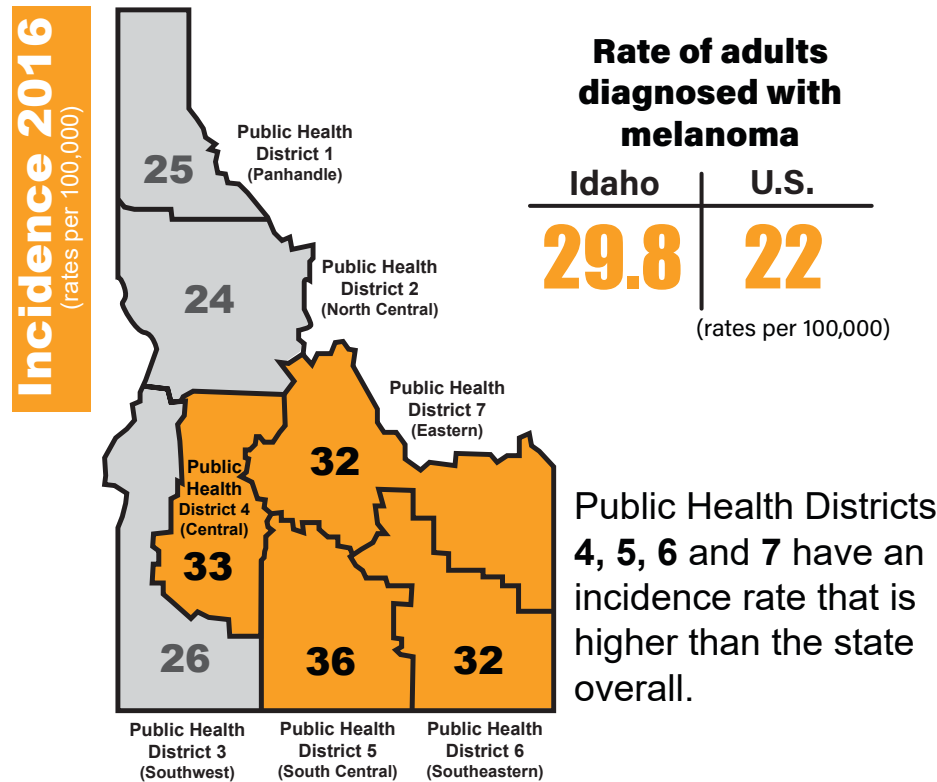
## THE DEADLIEST FORM

of skin cancer is melanoma.

Idaho has the highest melanoma **DEATH RATE** in the U.S.

**Idaho Goals:** Reduce adult sunburn and reduce artificial tanning among adults and youth.

### Melanoma of the Skin



**544**  
new cases of melanoma in 2016

**48**  
deaths from melanoma in 2017

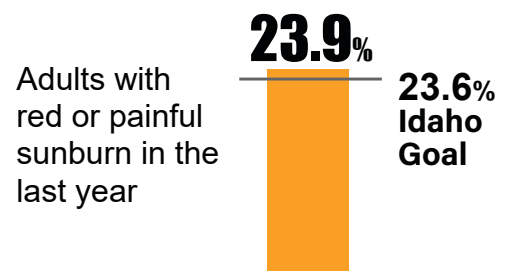
**83%**  
of Idahoans will survive at least 5 years after melanoma diagnosis

### Priority Populations

Greatest impact on skin cancer rates can be made by focusing on:

- Sun safety behavior change among adults aged 25-34
- Individuals with prolonged exposure (ex. outdoor workers) vs. one-time sunburners
- Educating 11th- and 12th-grade females on the risks associated with using artificial sources of ultraviolet light for tanning

### Sunburn 2016



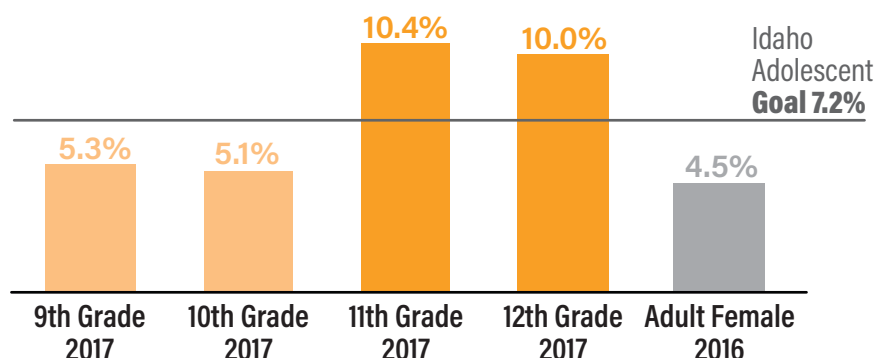
### Artificial Tanning

People who use artificial UV tanning devices before the age of 35 are **75% more likely** to develop melanoma.

#### Policy

In 2015, Idaho passed legislation to ban artificial tanning for children under the age of 13 and require parental consent for those aged 14 to 18.

Indoor tanning use is higher among females than males. Adolescent females are more likely to use artificial tanning than adult females.



For more information and sources visit: [www.cancer.dhw.idaho.gov](http://www.cancer.dhw.idaho.gov) or [www.ccaidaho.org](http://www.ccaidaho.org)



This publication was supported by the Grant or Cooperative Agreement Numbers, DP006084 and NU58DP006314, funded by the Centers for Disease Control and Prevention. Its contents are solely the responsibility of the authors and do not necessarily represent the official views of the Centers for Disease Control and Prevention or the Department of Health and Human Services.

March 2019