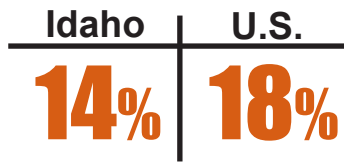
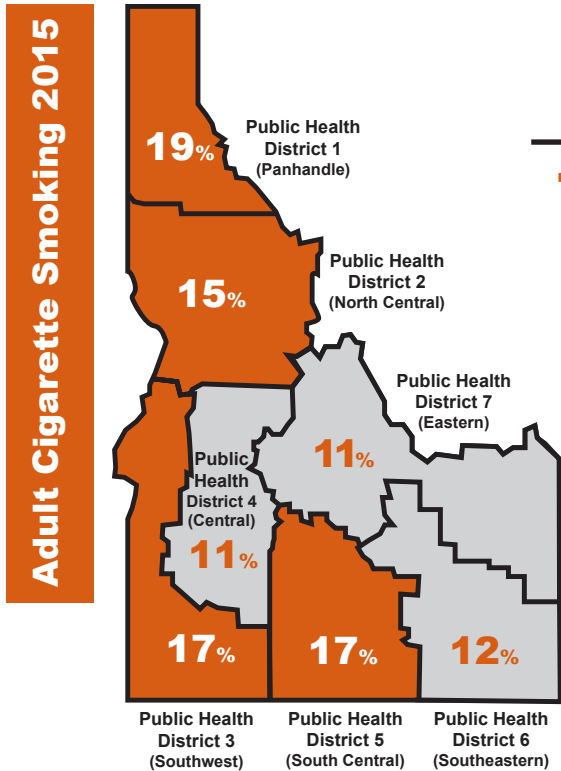


IDAHO TOBACCO RELATED CANCER 2016

Smoking cessation is the **single most impactful behavior** to improve individual health for those who smoke.

Idaho Goal: Less than 12% cigarette smoking by 2020



Public Health Districts 1, 2, 3, & 5 have higher percentages than the state overall.

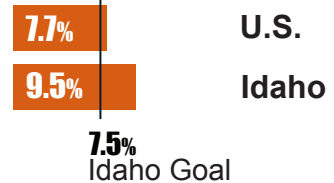
Populations experiencing disparities in smoking:

27%
American Indian/
Alaskan Native

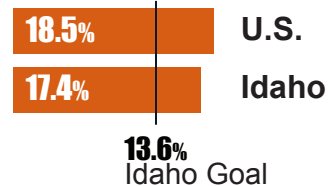
19%
Lesbian, Gay,
Bisexual, Transgender

29%
Low Socioeconomic
Status

Adult Male Smokeless Tobacco Use 2014



Adolescent Tobacco Use 2015



Call to Action

- Ask patients about tobacco use
- Implement tobacco-free environment policies
- Provide or refer patients to tobacco cessation services

Resource

1-800-QUIT NOW
projectfilter.org



Lung Cancer Screening Recommendation

- Adults age 55-80
- Low-dose computed tomography
- Every year - If have a 30 pack year history and currently smoke or have quit within the last 15 years

Tobacco use increases a person's risk for the following cancers:

TOBACCO RELATED CANCERS

2,990

new cases of tobacco related cancers

825

new cases of trachea, lung, and bronchus cancers

1,575

deaths from tobacco related cancers

658

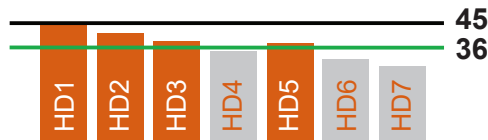
deaths from trachea, lung and bronchus cancers

5-year survival for trachea, lung and bronchus cancers continues to remain below 20%.

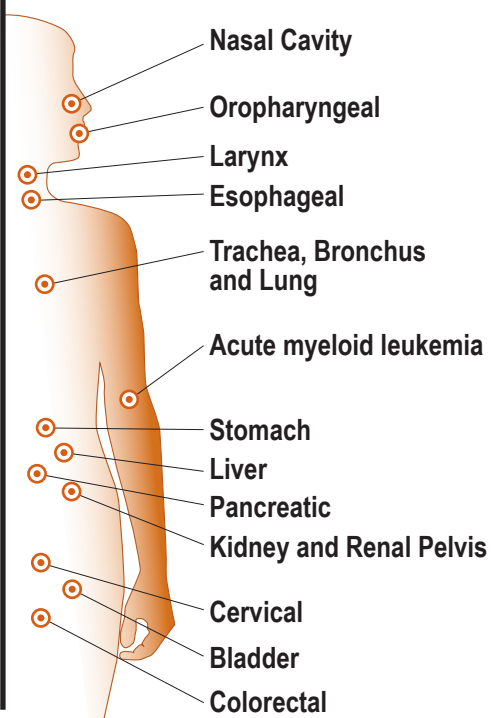


Incidence 2013
Trachea, Lung and Bronchus

National — 56
Idaho — 47
(rates per 100,000)



Mortality 2014
Trachea, Lung and Bronchus



For more information and sources visit: www.cancer.dhw.idaho.gov or www.ccaidaho.org



This publication was supported by the Grant or Cooperative Agreement Numbers, DP003881 and DP6084, funded by the Centers for Disease Control and Prevention. Its contents are solely the responsibility of the authors and do not necessarily represent the official views of the Centers for Disease Control and Prevention or the Department of Health and Human Services.

December 2016