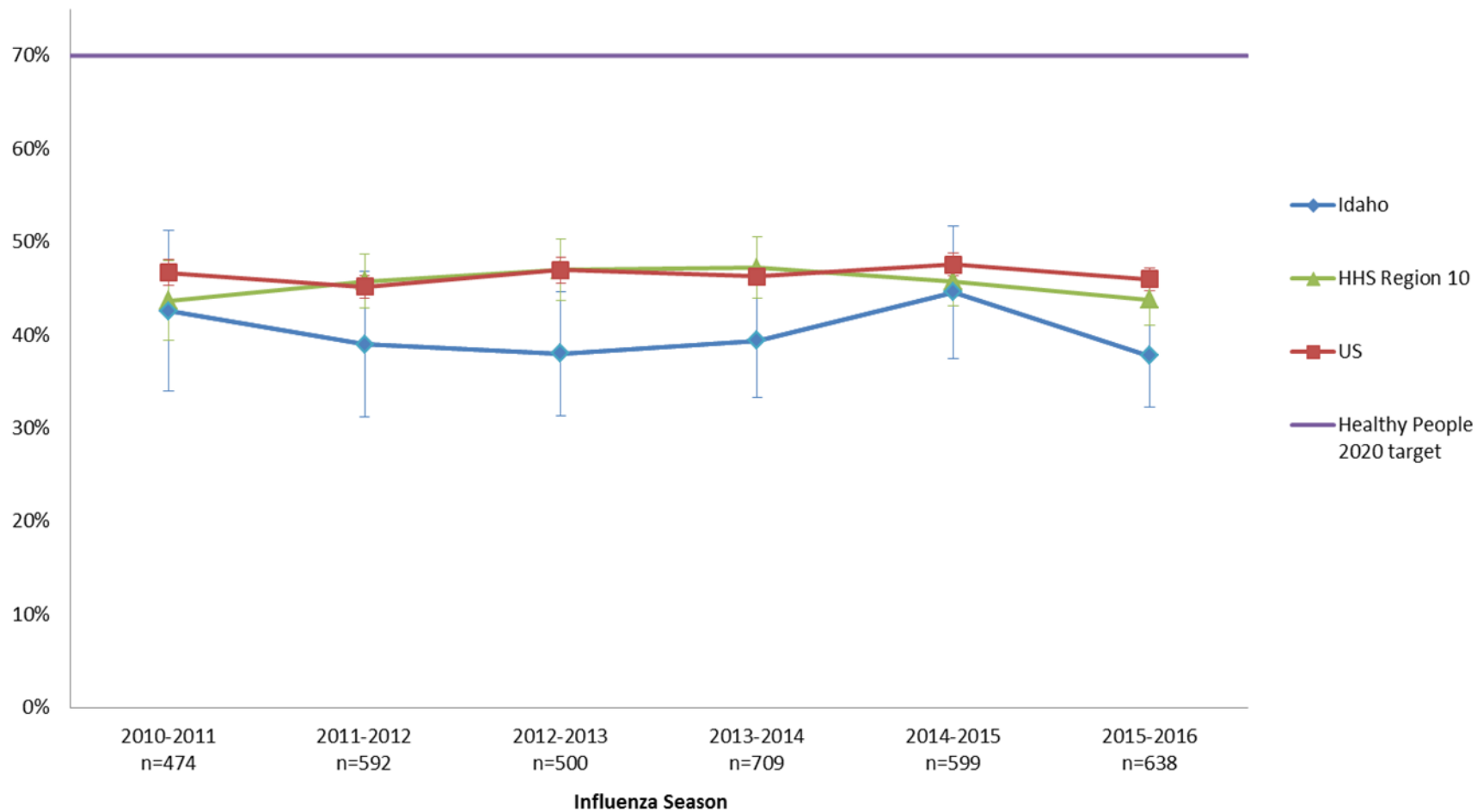


## Influenza vaccination coverage among adults 18–64 years of age at high risk, 2009-2010 influenza season – 2015-2016 influenza season



\* Selected high-risk conditions include asthma, diabetes, or heart disease (before 2013-14 Influenza season) or asthma, diabetes, heart disease, chronic obstructive pulmonary disease, or cancers other than skin cancer (2013-14 Influenza season through present).