

State of Idaho
Bureau of Laboratories
2220 Old Penitentiary Rd
Boise, ID 83712-8249

Phone: 208-334-2235

Fax: 208-334-4067

E-mail: statelab@dhw.idaho.gov

Inside this issue:

Lab Spotlight	1
Packaging and Shipping Course	1
Sentinel Lab Messages Drill	2
IBL Updates	4-6
Biological/Chemical Threat Word Find	5
Upcoming Teleconferences	6

Idaho Bureau of Laboratories Clinical Forum

Volume 5, Issue 1

Spring 2012



IDAHO DEPARTMENT OF
HEALTH & WELFARE

Lab Spotlight: Emergency Preparedness Section

Wendy Loumeau

Recently, Idaho Bureau of Laboratories' (IBL) Biological Threat (BT) and Chemical Threat (CT) groups underwent an organizational change. With the retirement of Walt DeLong, BT Laboratory Coordinator, IBL consolidated the BT and CT groups into one Emergency Preparedness section managed by Michael Stevenson with an Assistant BT Laboratory Coordinator, Assistant CT Laboratory Coordinator, Health Education Specialist, and laboratory scientist.



Emergency Preparedness Section Manager, Michael Stevenson, observes Robert Voermans' work in a biosafety cabinet

The Emergency Preparedness Section is funded by the Centers for Disease Control and Prevention's Public Health Emergency Preparedness (PHEP) cooperative agree-

ment. Preparedness activities funded by the PHEP cooperative agreement are targeted specifically for the development of emergency-ready public health departments that are flexible and adaptable. In addition to PHEP funding, the

Emergency Preparedness Section receives funding through the Office of the Assistant Secretary for Preparedness and Response (ASPR), which manages the Hospital Prepar-

(continued on page 2)

Packaging and Shipping Division 6.2 Materials Course

May 8, 2012

- Idaho Bureau of Laboratories Boise, Idaho
- 8 am—5 pm MST

May 10, 2012

- Southeastern Idaho Public Health Pocatello, Idaho

- 8 am—5 pm MST

May 16, 2012

- Panhandle Health District Hayden, Idaho
- 8 am—5 pm PT

Register for FREE at www.aphl.org/courses/Pages/021-12.aspx

Clinical Forum
Editorial Staff

Dr. Christopher Ball
Colleen Greenwalt
Ashley McCartney
Amanda Bruesch
Wendy Loumeau
Steve Gregoire
Brian Deis

Sentinel Lab Messages Drill

Wendy Loumeau

The CDC Public Health Emergency Preparedness (PHEP) Cooperative agreement requires a PHEP-funded reference laboratory to test rapid communications with sentinel laboratories. The intent is to ensure that PHEP-funded LRN laboratories and sentinel laboratories are able to rapidly communicate important information with one another.

Idaho Bureau of Laboratories (IBL) recently initiated a messages drill with sentinel laboratories. The messages drill was emailed to 48 sentinel laboratories and faxed to 1 sentinel laboratory on 2/7/12. 50% of the sentinel clinical

laboratories acknowledged receipt of the message within 64 minutes after the message was sent. The last sentinel clinical laboratory acknowledged receipt of the message 8 days after the initial message was sent.

This drill provided valuable insight on how to more effectively communicate urgent messages to sentinel laboratories. First, the intent of the drill was to acknowledge receipt of the message to Idaho Bureau of Laboratories. If sending an email, respondents are asked to select "Reply" instead of "Reply all."

(continued on page 3)

Emergency Preparedness Section

continued from page 1

edness Program (HPP). This funding is used at IBL to support the sentinel laboratories across Idaho in training and workshops.

Emergency Preparedness Section Manager

Michael Stevenson most recently held the position of CT Laboratory Coordinator at IBL and is now responsible for overseeing the new Emergency Preparedness Section. This role involves budget management, scientific point-of-contact during emergency incidents, and back-up staff for both BT and CT labs. In the coming months, the section staff will become more cross-trained in both biological and chemical threat tests to aid in handling surge samples during an emergency incident.

Assistant BT Laboratory Coordinator

Assistant BT Laboratory Coordi-

nator, Robert Voermans, is primarily responsible for overseeing activity and testing in the BT laboratory. IBL is a reference laboratory within the Laboratory Response Network (LRN). As such, the BT laboratory uses rapid molecular and conventional microbiological methods to confirm the presence of biological threat agents in clinical samples from sentinel laboratories and environmental samples. Biological threat agents include *Bacillus anthracis*, *Francisella tularensis*, and *Yersinia pestis*. Robert also performs testing in partnership with the Food Emergency Response Network (FERN). This aids in the early detection of biological agents in the American food supply. Robert received his BS in biology from Boise State University and is currently pursuing his MS in biology.

(continued on page 3)

Assistant BT
Laboratory
Coordinator,
Robert Voermans



Emergency Preparedness Section

continued from page 2



Assistant CT
Coordinator,
Dan Rousselle in
front of the LC/
MS/MS

Assistant CT Laboratory Coordinator

Assistant CT Laboratory Coordinator, Dan Rousselle, is primarily responsible for chemical analyses, chemical method proficiency, and operation and maintenance of chemical analysis instrumentation. Dan performs chemical analyses on clinical matrices (blood and urine specimens), food samples in partnership with FERN, and environmental samples that could contain a chemical threat agent. The CT laboratory analyzes specimens for the presence of toxic chemical agents including cyanide, tetramine (rat poison), and toxic metals (e.g. lead and mercury). Proficiency of chemical testing methods requires implementation and validation of each method through proficiency tests; these tests are performed 3 times a year per method. Dan

received his BA in chemistry from Northwest Nazarene University.

Health Education Specialist

As IBL's Health Education Specialist, Wendy Loumeau, serves as a liaison between the state laboratory and sentinel laboratories. She facilitates annual sentinel laboratory workshops, performs site visits, distributes preparedness surveys and proficiency tests to sentinel laboratories, and manages the sentinel laboratory database. Wendy works toward continued partnership and improved communication with these laboratories and IBL. Wendy received her BS in health education from Brigham Young University.



Health Education Specialist,
Wendy Loumeau

IBL has plans to update the [State Lab website](#) to reflect the formation of the Emergency Preparedness Section. It will likely be completed by the summer of 2012. Please contact Wendy Loumeau (loumeauw@dhw.idaho.gov) with any suggestions for the update.

Sentinel Lab Messages Drill

continued from page 2

Second, IBL is provided with only one email address for some laboratories. If that contact is unable to access email on the day the message is sent, then it would not be received by other staff. To resolve this issue, IBL asks that each laboratory provide more than one contact for the database, if possible.

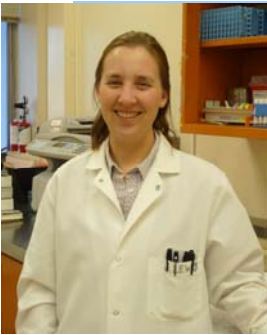
Lastly, a few laboratories did not respond in as timely of a manner as they could have simply because they thought that someone else from their laboratory had already responded. It is a good practice to have each recipient respond to an urgent message from IBL to pre-

vent similar issues from recurring.

In addition, IBL has updated the procedure for sending urgent messages that require acknowledgement of the message. If no response is received from a laboratory within 24 hours, the message will be re-sent using an alternate mode of communication. After 48 hours of no response, labs will be contacted via telephone to confirm receipt of the urgent message. This drill and the lessons learned will ensure more timely communication of urgent messages between IBL and sentinel laboratories.

IBL Updates

Bacteriology Principal Microbiologist: Joanna Lewis

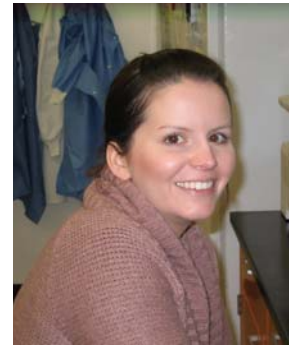


Joanna Lewis accepted a promotion as Microbiologist, Principal for the reference bacteriology laboratory. Prior to this position, Joanna worked as a Microbiologist, Senior, rotating through the virology, reference bacteriology, mycobacteriology, and molecular epidemiology laboratories. She has been with Idaho Bureau of Laboratories for two years. Joanna received a B.S. in Biology from the College of Idaho and has also worked in plant biotechnology.

Joanna and her husband, Sam, have two daughters, Violet, who is 4, and Penelope, who is 1, and two cats, Xander and Henry. In her free time, she enjoys being outdoors, sewing, knitting, reading, gardening, and yoga.

Microbiologist Senior: Ashley McCartney

Ashley McCartney joined IBL on January 9, 2012, as a Microbiologist, Senior. Ashley received her Bachelor's degree in Biology from the College of Idaho where she also studied leadership and participated in toxicology research. She is currently finishing up her Master's degree in Biology at Boise State University with a thesis on the effect of dioxin on immune cells during liver regeneration. Ashley has lived in Idaho for 14 years and currently lives in Boise with her daughter, Brynn and two cats, Ruby Tuesday and Lucy Skittles. She enjoys going out to dinner, watching reality shows, and spending time with friends and family.



Microbiologist Senior: Brian Deis



Brian Deis joined the Bureau of Laboratories in January as a Microbiologist, Senior. Brian received both his B.S. and M.S. degrees in Biology at Boise State University where his research focused on Microbial Biofuels. His previous jobs include working at a Food Safety Lab and as member of the Albertsons/Supervalu Quality Assurance team. During graduate school, he was awarded a two year fellowship to teach K-12 science in the Boise area. Prior to his pursuit of a biology career, Brian worked as a chef and still enjoys honing his skills as a culinarian. Brian also spends his free time bicycling, running, and spending time with his wife, Christine, and 1 ½ year old daughter, Zoe.

Biological/Chemical Threat Word Find

answers on page 6

S E S N B A C F V K J P E Q B D V C L L H V B C E E Y P W R
 D I G L R E A U A I R I R F K U E C B V R P G U N E B N E W
 S T S I C E Z A D E C E E F N B R G W E U N O V I X X H G Y
 F M Y N H A X J P H A K N J X D I K Y B R M E U M G P F P G
 P R J V E L S A O M D D V Y Q I B F H T J O X S A C I E V H
 D Q C Z W R R H U A M S A T T V N F P O Z W B P R H V F H X
 J Y G R A E A B B F I X M E V Y Y I A R L K A E T N A Q V W
 W N C J D Q X L G K U E N F T I R E R S F D N C E O X D O E
 B Y L N U Q A X U S M R S U E F Q A G B O T E T T E M N H H
 V I E N H R E K E T U U N G G Z Y F O X A K T R V A O E D R
 E S Y M S E J J K B A E J Q X Y H H T W F D C O I U W F V Q
 S F T E V E H P A G J L Q J B A Y U A U W M H M C A P H U C
 O X N T D E G L N V D Q L B J J K M M B T K K E W P V D V V
 O I G V V J L M A P J O T E D V C O O U X O L T K Y T C W O
 C E G L Y E R S I N I A P E S T I S R Z N Q Q R Z L E R I I
 Z W Z W I D L I D S T D G Y C I V X H A A I T Y D K V O M Q
 X O C X B S W A C T E H M Q Z X C W C V R N L I M N J L W I
 A E O V I U E P X U I C R D S B Z N S R T I C U P U S L D T
 K C A W O L H C P L A P A A O Y I L A Q U C V D T B F N G L
 J T Z C V B B R C L Q G C X X Z I X G R U I X E U O W R G P
 N O D Q S L L B T V A K T Z H N A N V O F R Y Y M I B V R E
 X L G O J E V Q Z D V M M Y U N Q C W W B M Y B J D P U L E
 V F B E N D P A S B A L L E N I T N E S Q X H Z C C K X Q S
 Y K D Q I X L V F R A I D W U I Q I E D I N A Y C R V U X F
 V G Q V Q L E W I S I T E B M S F X N F D I B G B N Q F O F
 F U Z R E Z L Q G Y S H X G F X E I K M J M A I T X Q O I L
 D S V C F E U Q C Z I H L F A E H Q H G Q Z G K B K C R L A
 F X U F K E U N Y O V W V H T Z T V I W P D A B M O H I X V
 W R K M X N D N I V S E H M K O Y K G J R S D S Y I F X E H
 B L Z Z D K A P L I A P U N W V X Y Q R A X C L N H L B W V

- ABRIN
- ANTHRAX
- ARSENIC
- BOTULINUM
- BRUCELLA
- BURKHOLDERIA
- CADMIUM
- COXIELLA BURNETII
- CYANIDE
- FRANCISELLA TULARENSIS
- FTIR
- GAS CHROMATOGRAPHY
- LEAD
- LEWISITE
- LRN
- PCR
- PREPAREDNESS
- RICIN
- SENTINEL LAB
- SPECTROMETRY
- TETRAMINE
- YERSINIA PESTIS

To be added

or removed

from the

Clinical

Forum

statelab@dhw.idaho.gov

Emergency Preparedness Section Manager: Michael Stevenson



In January 2012, Michael Stevenson accepted a position as Emergency Preparedness Section Manager at the Idaho Bureau of Laboratories. This is a new position which merges the Biological Threat and Chemical Threat groups and serves to unify laboratory emergency preparedness. Prior to this position, Michael worked as the Chemical Threat Laboratory Coordinator and has been at IBL for 2 years. He was also employed as a Principal Chemist in the Feed and Fertilizer Lab at the Idaho Department of Agriculture. Born and raised in Indiana (a Hoosier!), Michael graduated from Butler University and earned his Doctor of Philosophy in Chemistry from Stanford University in 1993.

Outside of work, Michael has a wide range of interests and hobbies. He enjoys the outdoors and rides his bike to work regularly (even in the winter). Michael plays violin in the Meridian Symphony

Orchestra and sings in two local choirs. His parents retired to Hawaii, so Michael looks forward to yearly vacations there!

Solution to Word Find

(Over,Down,Direction)
 ABRIN(21,10,NW)
 ANTHRAX(9,14,SE)
 ARSENIC(7,9,SW)
 BOTULINUM(27,21,NW)
 BRUCELLA(1,30,NE)
 BURKHOLDERIA(15,1,SE)
 CADMIUM(11,3,S)
 COXIELLA BURNETII(2,19,NE)
 CYANIDE(25,24,W)
 FRANCISELLA TULARENSIS(21,21,NW)
 FTIR(14,8,E)
 GAS CHROMATOGRAPHY(19,20,N)
 LEAD(6,19,NE)
 LEWISITE(6,25,E)
 LRN(20,1,SE)
 PCR(8,18,S)
 PREPAREDNESS(12,1,SW)
 RICIN(22,21,N)
 SENTINEL LAB(20,23,W)
 SPECTROMETRY(24,5,S)
 TETRAMINE(25,9,N)
 YERSINIA PESTIS(5,15,E)

Upcoming Teleconferences

April 11, 2012 11:00 Mountain Time

“Laboratory Response to a Major Radiological or Nuclear Incident”

April 17, 2012 11:00 am Mountain Time

“Separated at Birth: Differentiating Parasitic Lookalikes”

April 24, 2012 11:00 am Mountain Time

“Emerging and Resurging Infectious Diseases: 2012”

May 15, 2012 11:00 am Mountain Time

“Laboratory Diagnosis of Lyme Disease in North America”

June 12, 2012 11:00 Mountain Time

“Treponemal Based Immunoassay for Primary Syphilis Screening”

Teleconferences will be held at Idaho Bureau of Laboratories. Contact Dave Eisentrager (eisenra@dhw.idaho.gov) to register.

Data Coordinator: Ivana Hotchkiss



Ivana Hotchkiss joined IBL on February 27, 2012 as a Data Coordinator. Prior to accepting this position, Ivana was completing her Bachelor's degree in Business Administration at Boise State. Her previous jobs include working at MPC Computers as a Business Analyst, Program Manager, and Customer Service Manager.

Ivana and her husband, Lee, have three children and three grandchildren as well as a dog. In her free time, she enjoys reading, gardening, needlepoint, and crocheting.

