

INDUCED ABORTION DATA SUMMARY

IDAHO

**Induced Abortions Occurring in Idaho and
Induced Abortions to Idaho Residents**

1994-2004

**Bureau of Health Policy and Vital Statistics
Division of Health
Idaho Department of Health and Welfare**

February 2006

TABLE OF CONTENTS

	<u>Page</u>
Purpose.....	1
 <u>Induced Abortions Occurring in Idaho</u>	
Definition, limitations, and summary.....	2
District and county of occurrence, 1994-2004 (Table 1).....	3
Selected demographic characteristics, 1994-2004 (Table 2A).....	4
Selected demographic characteristics (percent), 1994-2004 (Table 2B).....	5
Idaho residence status, 1994-2004 (Graph 1).....	6
Marital status, 1994-2004 (Graph 2).....	6
Age, 1994-2004 (Graph 3).....	7
Number of previous abortions, 1994-2004 (Graph 4).....	7
Procedure characteristics, 1994-2004 (Table 3A).....	8
Procedure characteristics (percent), 1994-2004 (Table 3B).....	9
Termination procedure by length of gestation, three-year total, 2002-2004 (Table 4).....	10
Length of gestation, three-year total, 2002-2004 (Graph 5).....	10
Age by length of gestation, three-year total, 2002-2004 (Table 5).....	11
Age by length of gestation, three-year total, 2002-2004 (Graph 6).....	11
Age by marital status, three-year total, 2002-2004 (Table 6).....	12
Age by marital status, three-year total, 2002-2004 (Graph 7).....	12
Age by number of previous induced abortions, three-year total, 2002-2004 (Table 7).....	13
Age by number of previous induced abortions, three-year total, 2002-2004 (Graph 8).....	13
Patient educational materials provided, 1994-2004 (Table 8).....	14
Informed consent, aged <18, 2004 (Table 9).....	14
 <u>Induced Abortions to Idaho Residents</u>	
Definition, limitations, and summary.....	15
District and county of residence, 1994-2004 (Table 10).....	16
State of occurrence, 1994-2004 (Table 11).....	17
Occurring in Idaho and out of state, 1994-2004 (Graph 9).....	17
Age, abortion rate, and abortion ratio, 1994-2004 (Table 12).....	18
Termination procedure by length of gestation, three-year total, 2002-2004 (Table 13).....	19
Length of gestation, three-year total, 2002-2004 (Graph 10).....	19
 <u>Appendix</u>	
Counties comprising Idaho public health districts.....	20

INDUCED ABORTION SUMMARY REPORT

Purpose

The reporting of induced abortions occurring in Idaho has been required by state statute since July 1, 1977, as provided in Section 39-261, Idaho Code. The Bureau of Health Policy and Vital Statistics began collecting abortion data in July 1977, with 1978 the first full year for which abortion statistics are available. This summary report contains data regarding abortions occurring in Idaho and data regarding abortions to Idaho residents for the years 1994 - 2004.

INDUCED ABORTIONS OCCURRING IN IDAHO 1994-2004

Definition

Induced abortions occurring in Idaho include all reported abortion procedures occurring in Idaho, regardless of the patient's state of residence.

Limitations

Due to revisions in the database, data may differ slightly from those previously published by the Bureau of Health Policy and Vital Statistics. The reader is cautioned that the database contains small numbers; therefore, percents, rates, and trends tend to randomly fluctuate.

Summary

From 1994 to 2004, the number of induced abortions occurring in Idaho decreased 8.0 percent from 1,047 in 1994 to 963 in 2004. In 2004, 90.7 percent of abortions occurred in Ada County; 6.7 percent occurred in Bannock County and 2.6 percent occurred in Blaine County.

The number of abortions occurring to Idaho residents in Idaho decreased 4.5 percent from 972 in 1994 to 928 in 2004. At the same time, the number of abortions occurring to out-of-state residents in Idaho decreased 53.3 percent. Of the 1,047 abortions occurring in Idaho in 1994, 75 (7.2 percent) were to out-of-state residents compared with 35 out of 963 (3.6 percent) in 2004.

Table 1
INDUCED ABORTIONS OCCURRING IN IDAHO
District and County of Occurrence
1994-2004

PLACE OF OCCURRENCE	1994	1995	1996	1997	1998	1999	2000	2001	2002	2003	2004
TOTAL IN IDAHO	1,047	970	1,022	878	888	867	801	738	829	911	963
District 1	-	-	1	-	-	1	-	-	-	-	-
District 2	23	-	-	-	-	-	-	-	-	-	-
District 3	-	-	-	-	1	-	-	-	-	-	-
District 4	935	910	943	787	822	798	699	652	756	838	873
District 5	1	4	31	35	24	24	30	32	10	24	25
District 6	88	54	47	56	40	43	72	53	63	49	65
District 7	-	2	-	-	1	1	-	1	-	-	-
Ada	935	910	943	787	822	798	699	652	756	838	873
Adams	-	-	-	-	-	-	-	-	-	-	-
Bannock	88	54	47	56	40	43	72	53	63	49	65
Bear Lake	-	-	-	-	-	-	-	-	-	-	-
Benewah	-	-	-	-	-	-	-	-	-	-	-
Bingham	-	-	-	-	-	-	-	-	-	-	-
Blaine	-	3	30	34	24	24	30	32	10	24	25
Boise	-	-	-	-	-	-	-	-	-	-	-
Bonner	-	-	1	-	-	-	-	-	-	-	-
Bonneville	-	2	-	-	1	-	-	-	-	-	-
Boundary	-	-	-	-	-	-	-	-	-	-	-
Butte	-	-	-	-	-	-	-	-	-	-	-
Camas	-	-	-	-	-	-	-	-	-	-	-
Canyon	-	-	-	-	1	-	-	-	-	-	-
Caribou	-	-	-	-	-	-	-	-	-	-	-
Cassia	-	-	-	-	-	-	-	-	-	-	-
Clark	-	-	-	-	-	-	-	-	-	-	-
Clearwater	-	-	-	-	-	-	-	-	-	-	-
Custer	-	-	-	-	-	-	-	-	-	-	-
Elmore	-	-	-	-	-	-	-	-	-	-	-
Franklin	-	-	-	-	-	-	-	-	-	-	-
Fremont	-	-	-	-	-	-	-	-	-	-	-
Gem	-	-	-	-	-	-	-	-	-	-	-
Gooding	-	-	-	-	-	-	-	-	-	-	-
Idaho	-	-	-	-	-	-	-	-	-	-	-
Jefferson	-	-	-	-	-	-	-	-	-	-	-
Jerome	-	-	-	-	-	-	-	-	-	-	-
Kootenai	-	-	-	-	-	1	-	-	-	-	-
Latah	23	-	-	-	-	-	-	-	-	-	-
Lemhi	-	-	-	-	-	1	-	-	-	-	-
Lewis	-	-	-	-	-	-	-	-	-	-	-
Lincoln	-	-	-	-	-	-	-	-	-	-	-
Madison	-	-	-	-	-	-	-	1	-	-	-
Minidoka	-	-	-	-	-	-	-	-	-	-	-
Nez Perce	-	-	-	-	-	-	-	-	-	-	-
Oneida	-	-	-	-	-	-	-	-	-	-	-
Owyhee	-	-	-	-	-	-	-	-	-	-	-
Payette	-	-	-	-	-	-	-	-	-	-	-
Power	-	-	-	-	-	-	-	-	-	-	-
Shoshone	-	-	-	-	-	-	-	-	-	-	-
Teton	-	-	-	-	-	-	-	-	-	-	-
Twin Falls	1	1	1	1	-	-	-	-	-	-	-
Valley	-	-	-	-	-	-	-	-	-	-	-
Washington	-	-	-	-	-	-	-	-	-	-	-

Dash (-) represents zero.

Due to revisions in the database, data may differ slightly from those previously published by the Bureau of Health Policy and Vital Statistics.

Table 2A
INDUCED ABORTIONS OCCURRING IN IDAHO
Selected Demographic Characteristics
1994-2004

DEMOGRAPHIC CHARACTERISTICS	1994	1995	1996	1997	1998	1999	2000	2001	2002	2003	2004
TOTAL IN IDAHO	1,047	970	1,022	878	888	867	801	738	829	911	963
Age:											
10-14	4	8	15	10	8	3	7	4	4	3	2
15-19	256	244	265	226	221	229	159	168	176	178	189
15-17	97	88	99	91	69	72	53	54	66	47	68
18-19	159	156	166	135	152	157	106	114	110	131	121
20-24	327	278	284	277	272	246	270	220	259	304	302
25-29	208	173	194	157	159	164	160	145	171	171	191
30-34	138	142	135	90	114	117	92	95	110	137	151
35-39	82	105	95	92	87	73	78	71	73	74	95
40-44	29	17	33	24	26	32	33	29	35	43	32
45+	2	3	1	2	-	3	2	5	1	1	1
Not stated	1	-	-	-	1	-	-	1	-	-	-
Idaho residence status:											
Resident	972	904	962	840	862	839	779	712	800	871	928
Non-resident	75	66	60	38	26	28	22	26	29	40	35
Marital status:											
Married	259	215	212	167	174	218	168	168	178	238	184
Not married	785	755	808	711	712	649	632	569	650	671	778
Not stated	3	-	2	-	2	-	1	1	1	2	1
Previous induced abortions:											
None	763	718	744	658	657	672	637	597	627	691	725
1	200	195	202	155	173	137	117	96	149	159	182
2	53	35	53	45	40	34	33	29	39	38	39
3+	28	20	17	19	17	24	13	14	12	16	13
Not stated	3	2	6	1	1	-	1	2	2	7	4
Race/ethnicity:											
White	1,004	920	971	819	834	813	751	679	769	845	894
Black	7	5	9	10	7	10	8	13	15	11	17
Native American	9	19	15	14	13	10	10	17	7	10	11
Asian/Pacific Islander	21	25	24	31	31	32	23	24	32	32	32
Other	4	1	-	2	-	-	-	1	2	-	3
Race not stated	2	-	3	2	3	2	9	4	4	13	6
Hispanic*	75	50	96	91	102	82	87	92	90	110	115

* Race and Hispanic origin are reported separately on the abortion report. Women of Hispanic origin are included in appropriate race totals. Dash (-) represents zero.
 Due to revisions in the database, data may differ slightly from those previously published by the Bureau of Health Policy and Vital Statistics.

Table 2B
INDUCED ABORTIONS OCCURRING IN IDAHO
Selected Demographic Characteristics (Percent)
1994-2004

DEMOGRAPHIC CHARACTERISTICS	1994	1995	1996	1997	1998	1999	2000	2001	2002	2003	2004
TOTAL IN IDAHO	1,047	970	1,022	878	888	867	801	738	829	911	963
Age:											
10-14	0.4%	0.8%	1.5%	1.1%	0.9%	0.3%	0.9%	0.5%	0.5%	0.3%	0.2%
15-19	24.5	25.2	25.9	25.7	24.9	26.4	19.9	22.8	21.2	19.5	19.6
15-17	9.3	9.1	9.7	10.4	7.8	8.3	6.6	7.3	8.0	5.2	7.1
18-19	15.2	16.1	16.2	15.4	17.1	18.1	13.2	15.5	13.3	14.4	12.6
20-24	31.3	28.7	27.8	31.5	30.7	28.4	33.7	29.9	31.2	33.4	31.4
25-29	19.9	17.8	19.0	17.9	17.9	18.9	20.0	19.7	20.6	18.8	19.8
30-34	13.2	14.6	13.2	10.3	12.9	13.5	11.5	12.9	13.3	15.0	15.7
35-39	7.8	10.8	9.3	10.5	9.8	8.4	9.7	9.6	8.8	8.1	9.9
40-44	2.8	1.8	3.2	2.7	2.9	3.7	4.1	3.9	4.2	4.7	3.3
45+	0.2	0.3	0.1	0.2	-	0.3	0.2	0.7	0.1	0.1	0.1
Not stated	NA	NA	NA	NA	NA	NA	NA	NA	NA	NA	NA
Idaho residence status:											
Resident	92.8%	93.2%	94.1%	95.7%	97.1%	96.8%	97.3%	96.5%	96.5%	95.6%	96.4%
Non-resident	7.2	6.8	5.9	4.3	2.9	3.2	2.7	3.5	3.5	4.4	3.6
Marital status:											
Married	24.8%	22.2%	20.8%	19.0%	19.6%	25.1%	21.0%	22.8%	21.5%	26.2%	19.1%
Not married	75.2	77.8	79.2	81.0	80.4	74.9	79.0	77.2	78.5	73.8	80.9
Not stated	NA	NA	NA	NA	NA	NA	NA	NA	NA	NA	NA
Previous induced abortions:											
None	73.1%	74.2%	73.2%	75.0%	74.1%	77.5%	79.6%	81.1%	75.8%	76.4%	75.6%
1	19.2	20.1	19.9	17.7	19.5	15.8	14.6	13.0	18.0	17.6	19.0
2	5.1	3.6	5.2	5.1	4.5	3.9	4.1	3.9	4.7	4.2	4.1
3+	2.7	2.1	1.7	2.2	1.9	2.8	1.6	1.9	1.5	1.8	1.4
Not stated	NA	NA	NA	NA	NA	NA	NA	NA	NA	NA	NA
Race/ethnicity:											
White	96.1%	94.8%	95.3%	93.5%	94.2%	94.0%	94.8%	92.5%	93.2%	94.1%	93.4%
Black	0.7	0.5	0.9	1.1	0.8	1.2	1.0	1.8	1.8	1.2	1.8
Native American	0.9	2.0	1.5	1.6	1.5	1.2	1.3	2.3	0.8	1.1	1.1
Asian/Pacific Islander	2.0	2.6	2.4	3.5	3.5	3.7	2.9	3.3	3.9	3.6	3.3
Other	0.4	0.1	-	0.2	-	-	-	0.1	0.2	-	0.3
Race not stated	NA	NA	NA	NA	NA	NA	NA	NA	NA	NA	NA
Hispanic*	7.2	5.2	9.4	10.4	11.5	9.5	11.0	12.5	10.9	12.2	12.0

* Race and Hispanic origin are reported separately on the abortion report. Women of Hispanic origin are included in appropriate race totals
Dash (-) represents zero or a percent that rounds to less than 0.1%.

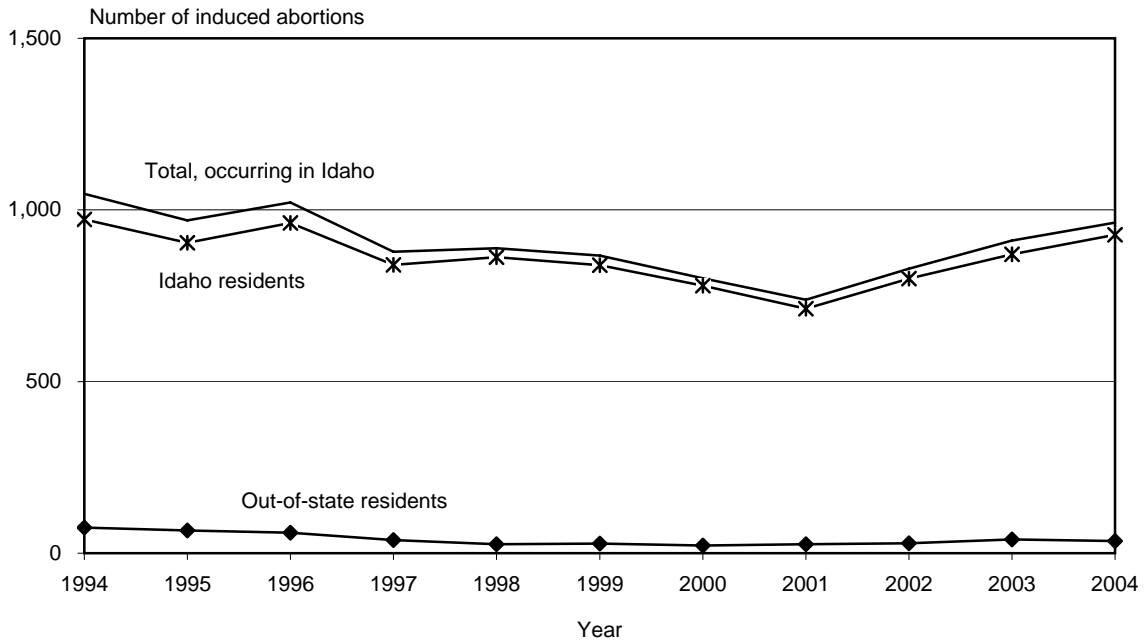
NA - not applicable.

Note: Percent distributions are based on records with known data.

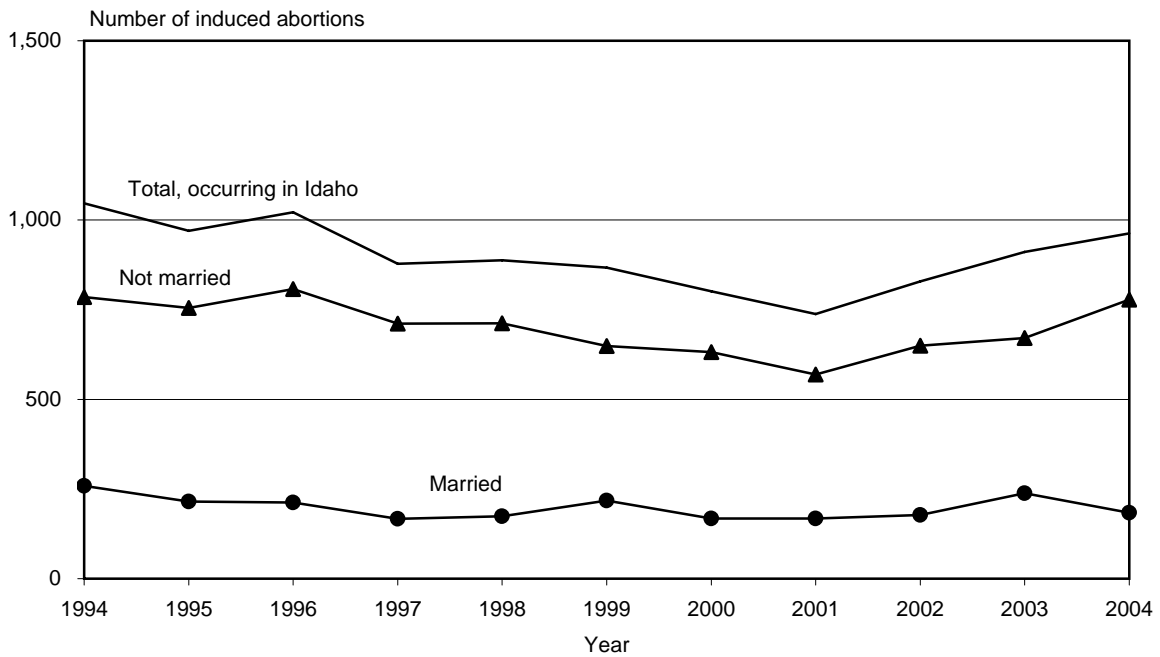
Percents may not sum to 100 due to rounding.

Due to revisions in the database, data may differ slightly from those previously published by the Bureau of Health Policy and Vital Statistics.

**Graph 1
INDUCED ABORTIONS OCCURRING IN IDAHO
Idaho Residence Status
1994-2004**

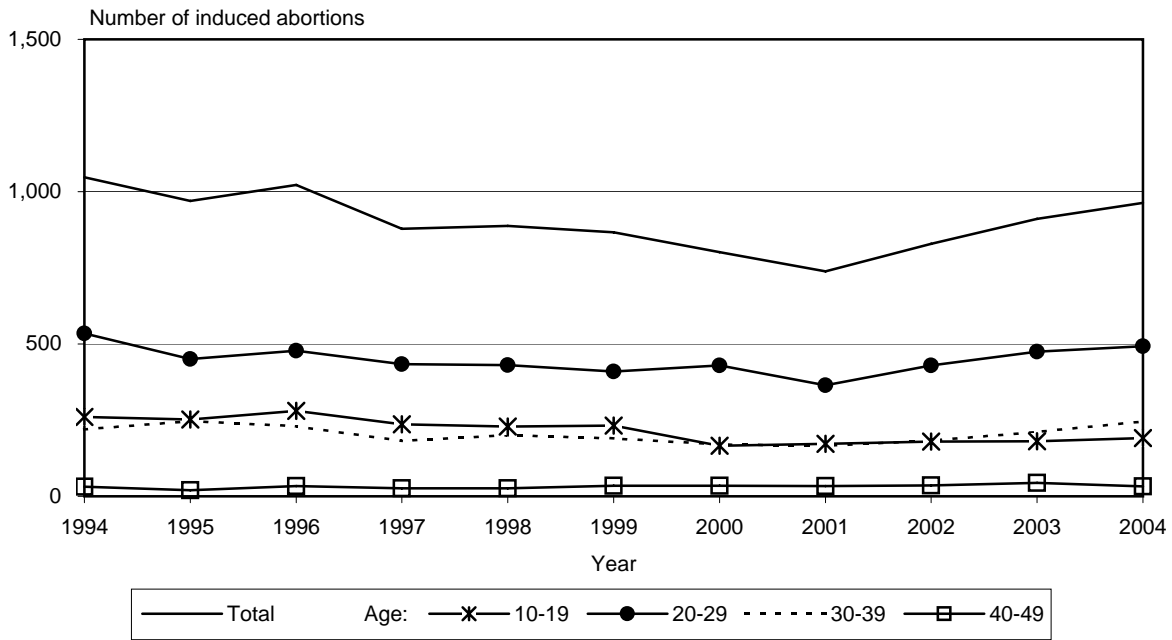


**Graph 2
INDUCED ABORTIONS OCCURRING IN IDAHO
Marital Status
1994-2004**



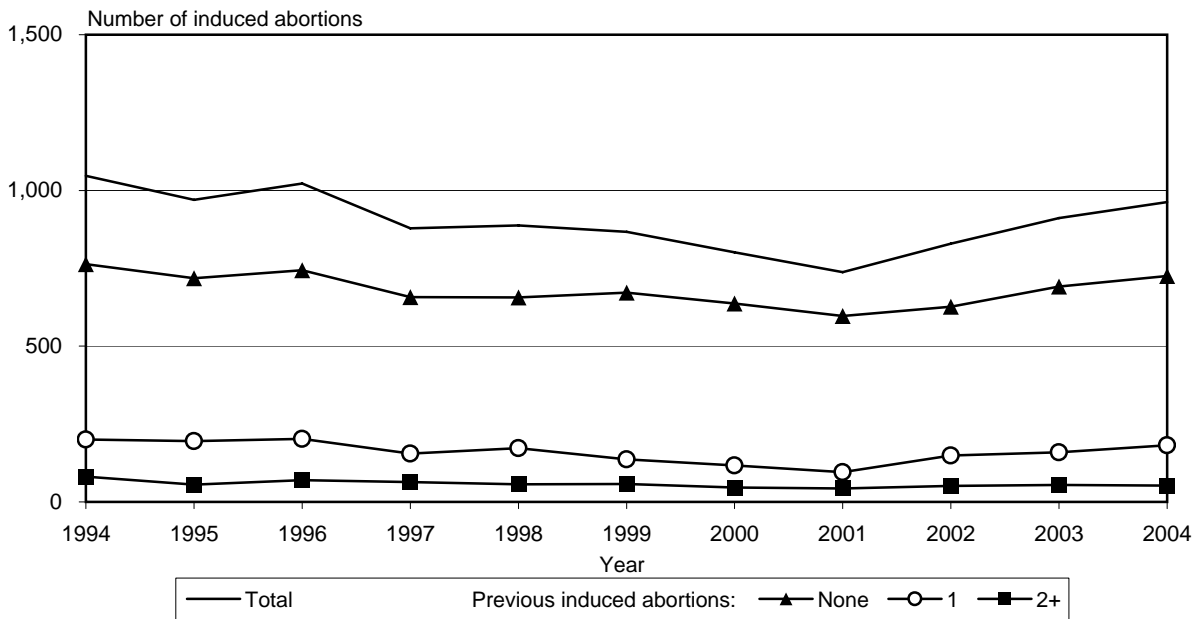
Note: Records with marital status not stated are included in total, but are not shown on graph. See Table 2A for number of records with marital status not stated.
Due to revisions in the database, data may differ slightly from those previously published by the Bureau of Health Policy and Vital Statistics.

Graph 3
INDUCED ABORTIONS OCCURRING IN IDAHO
Age
1994-2004



Note: Records with age not stated are included in the total, but are not shown on graph. See Table 2A for number of records with age not stated.

Graph 4
INDUCED ABORTIONS OCCURRING IN IDAHO
Number of Previous Abortions
1994-2004



Note: Records with number of previous abortions not stated are included in the total, but are not shown on graph. See Table 2A for number of records with previous abortions not stated.

Due to revisions in the database, data may differ slightly from those previously published by the Bureau of Health Policy and Vital Statistics.

Table 3A
INDUCED ABORTIONS OCCURRING IN IDAHO
Procedure Characteristics
1994-2004

PROCEDURE CHARACTERISTICS	1994	1995	1996	1997	1998	1999	2000	2001	2002	2003	2004
TOTAL IN IDAHO	1,047	970	1,022	878	888	867	801	738	829	911	963
Weeks of gestation:											
<9	480	487	523	466	446	488	476	488	501	540	585
9-10	345	322	312	251	297	236	217	153	211	236	238
11-12	162	111	135	121	104	106	74	74	87	103	111
13-15	41	33	35	26	25	20	14	12	18	13	18
16-20	13	12	10	9	10	8	12	6	8	12	6
21-24	5	5	4	2	5	7	4	1	2	3	5
25+	1	-	1	2	-	-	1	2	1	1	-
Not stated	-	-	2	1	1	2	3	2	1	3	-
Termination procedure: ¹											
Suction curettage	1,030	960	1,002	855	872	853	784	724	823	895	952
Medical (nonsurgical) ²	-	-	-	-	-	3	8	7	2	10	3
Dilation and evacuation (D&E)	6	2	3	4	1	1	3	1	1	3	1
Intra-uterine instillation (saline / prostaglandin)	9	8	4	4	2	4	4	2	2	1	4
Sharp curettage (D&C)	1	-	2	-	4	1	1	3	-	-	2
Hysterotomy / Hysterectomy	-	-	1	1	-	1	1	-	1	-	-
Other	1	-	10	14	9	4	-	-	-	1	1
Not stated	-	-	-	-	-	-	-	1	-	1	-

1. Only the primary procedure that terminated the pregnancy is shown in the table. There may be additional procedures used for the termination.

2. The classification "Medical (nonsurgical)" was not listed as a termination procedure prior to 1999. This procedure was included in the "Other" category prior to 1999.

Classification of procedures changed in 1999; data for previous years have been adjusted to the new classifications.

Dash (-) represents zero.

Due to revisions in the database, data may differ slightly from those previously published by the Bureau of Health Policy and Vital Statistics.

**Table 3B
INDUCED ABORTIONS OCCURRING IN IDAHO
Procedure Characteristics (Percent)
1994-2004**

PROCEDURE CHARACTERISTICS	1994	1995	1996	1997	1998	1999	2000	2001	2002	2003	2004
TOTAL IN IDAHO	1,047	970	1,022	878	888	867	801	738	829	911	963
Weeks of gestation:											
<9	45.8%	50.2%	51.3%	53.1%	50.3%	56.4%	59.6%	66.3%	60.5%	59.5%	60.7%
9-10	33.0	33.2	30.6	28.6	33.5	27.3	27.2	20.8	25.5	26.0	24.7
11-12	15.5	11.4	13.2	13.8	11.7	12.3	9.3	10.1	10.5	11.3	11.5
13-15	3.9	3.4	3.4	3.0	2.8	2.3	1.8	1.6	2.2	1.4	1.9
16-20	1.2	1.2	1.0	1.0	1.1	0.9	1.5	0.8	1.0	1.3	0.6
21-24	0.5	0.5	0.4	0.2	0.6	0.8	0.5	0.1	0.2	0.3	0.5
25+	0.1	-	0.1	0.2	-	-	0.1	0.3	0.1	0.1	-
Not stated	NA	NA	NA	NA	NA	NA	NA	NA	NA	NA	NA
Termination procedure: ¹											
Suction curettage	98.4%	99.0%	98.0%	97.4%	98.2%	98.4%	97.9%	98.2%	99.3%	98.4%	98.9%
Medical (nonsurgical) ²	-	-	-	-	-	0.3	1.0	0.9	0.2	1.1	0.3
Dilation and evacuation (D&E)	0.6	0.2	0.3	0.5	0.1	0.1	0.4	0.1	0.1	0.3	0.1
Intra-uterine instillation (saline / prostaglandin)	0.9	0.8	0.4	0.5	0.2	0.5	0.5	0.3	0.2	0.1	0.4
Sharp curettage (D&C)	0.1	-	0.2	-	0.5	0.1	0.1	0.4	-	-	0.2
Hysterotomy / Hysterectomy	-	-	0.1	0.1	-	0.1	0.1	-	0.1	-	-
Other	0.1	-	1.0	1.6	1.0	0.5	-	-	-	0.1	0.1
Not stated	NA	NA	NA	NA	NA	NA	NA	NA	NA	NA	NA

1. Only the primary procedure that terminated the pregnancy is shown in the table. There may be additional procedures used for the termination.

2. The classification "Medical (nonsurgical)" was not listed as a termination procedure prior to 1999. This procedure was included in the "Other" category prior to 1999.

Classification of procedures changed in 1999; data for previous years have been adjusted to the new classifications.

Note: Percent distributions are based on records with known data.

Percents may not sum to 100 due to rounding.

Additional procedures may be used for the termination.

Dash (-) represents zero or a percent that rounds to less than 0.1%.

NA - Not Applicable

Due to revisions in the database, data may differ slightly from those previously published by the Bureau of Health Policy and Vital Statistics.

Table 4
INDUCED ABORTIONS OCCURRING IN IDAHO
Termination Procedure by Length of Gestation
Three-Year Total, 2002-2004

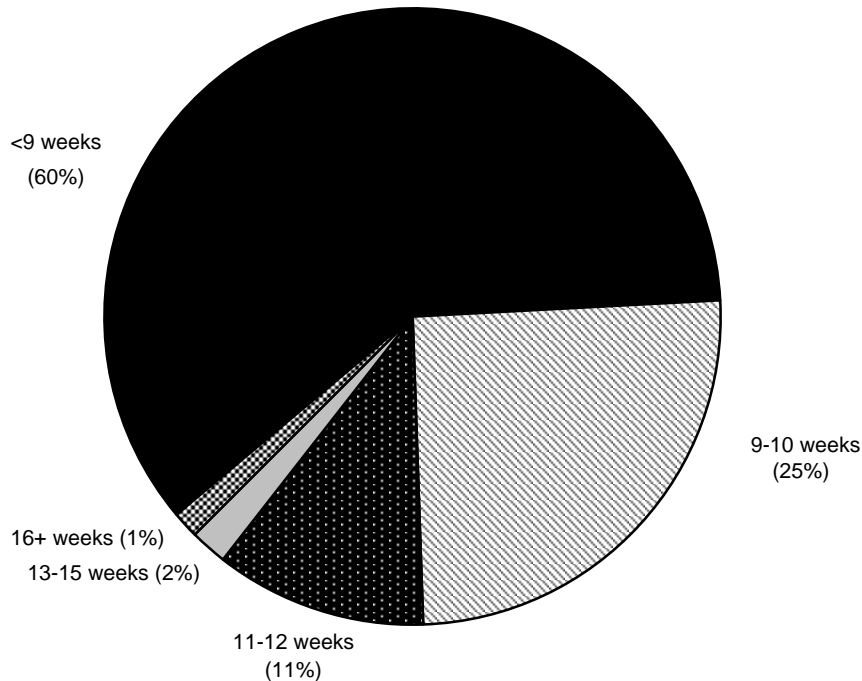
TERMINATION PROCEDURE*	TOTAL IN IDAHO	WEEKS OF GESTATION							
		<9	9-10	11-12	13-15	16-20	21-24	25+	Not Stated
TOTAL IN IDAHO	2,703	1,626	685	301	49	26	10	2	4
Suction curettage	2,670	1,621	684	299	49	12	1	1	3
Medical (nonsurgical)	15	4	-	2	-	5	3	1	-
Dilation and evacuation (D&E)	5	-	-	-	-	4	1	-	-
Intra-uterine instillation (saline / prostaglandin)	7	-	-	-	-	3	4	-	-
Sharp curettage (D&C)	2	1	1	-	-	-	-	-	-
Hysterotomy / Hysterectomy	1	-	-	-	-	1	-	-	-
Other	2	-	-	-	-	1	1	-	-
Not stated	1	-	-	-	-	-	-	-	1

* Only the primary procedure that terminated the pregnancy is shown in the table. There may be additional procedures used for the termination.

Dash (-) represents zero.

Due to revisions in the database, data may differ slightly from those previously published by the Bureau of Health Policy and Vital Statistics.

Graph 5
INDUCED ABORTIONS OCCURRING IN IDAHO
Length of Gestation
Three-Year Total, 2002-2004



Note: Percent distributions are based on records with known data for length of gestation. Percents may not sum to 100 percent due to rounding.

**Table 5
INDUCED ABORTIONS OCCURRING IN IDAHO
Age by Length of Gestation
Three-Year Total, 2002-2004**

AGE	TOTAL IN IDAHO	WEEKS OF GESTATION							
		<9	9-10	11-12	13-15	16-20	21-24	25+	Not Stated
TOTAL IN IDAHO	2,703	1,626	685	301	49	26	10	2	4
10-14	9	4	2	3	-	-	-	-	-
15-19	543	278	161	81	16	4	2	1	-
15-17	181	94	54	29	3	1	-	-	-
18-19	362	184	107	52	13	3	2	1	-
20-24	865	515	220	101	20	5	3	-	1
25-29	533	342	125	53	7	2	3	-	1
30-34	398	261	94	32	2	6	2	-	1
35-39	242	148	59	26	2	6	-	1	-
40-44	110	77	23	5	2	2	-	-	1
45+	3	1	1	-	-	1	-	-	-
Not stated	-	-	-	-	-	-	-	-	-

Dash (-) represents zero.

Due to revisions in the database, data may differ slightly from those previously published by the Bureau of Health Policy and Vital Statistics.

**Graph 6
INDUCED ABORTIONS OCCURRING IN IDAHO
Age by Length of Gestation in Weeks
Three-Year Total, 2002-2004**

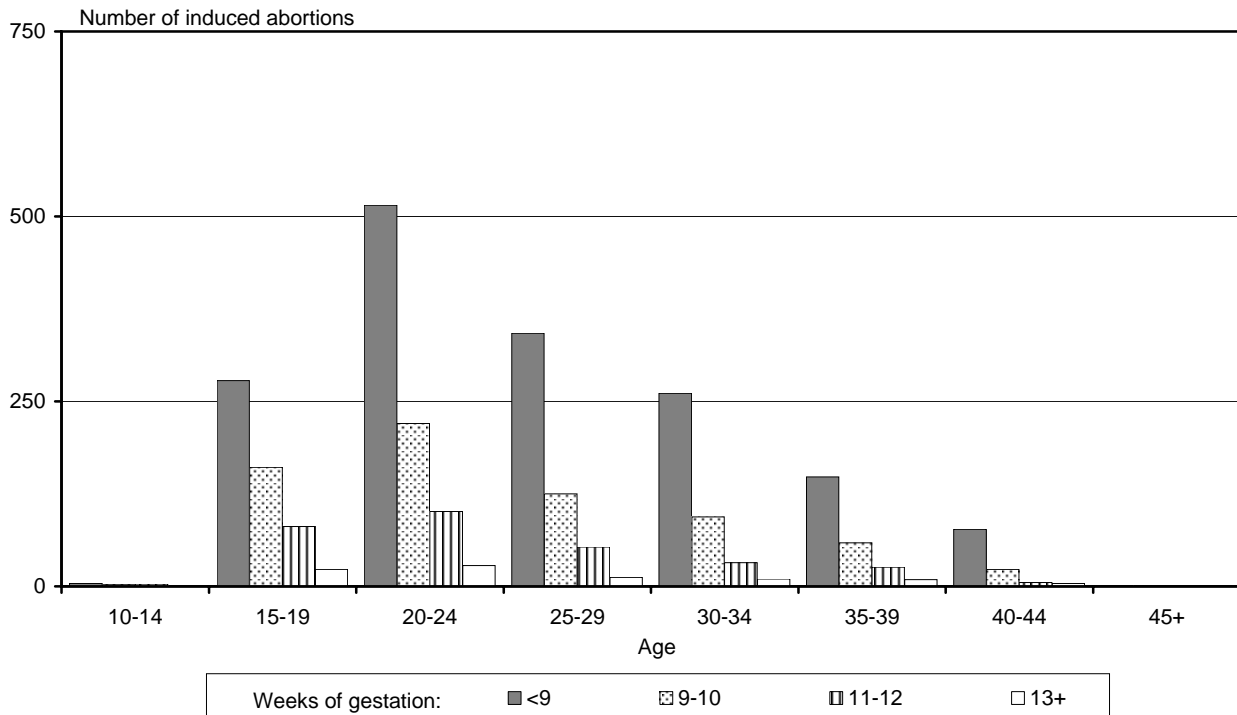


Table 6
INDUCED ABORTIONS OCCURRING IN IDAHO
Age by Marital Status
Three-Year Total, 2002-2004

AGE	TOTAL IN IDAHO	MARITAL STATUS		
		Not Married	Married	Not Stated
TOTAL IN IDAHO	2,703	2,099	600	4
10-14	9	8	1	-
15-19	543	516	27	-
15-17	181	176	5	-
18-19	362	340	22	-
20-24	865	728	136	1
25-29	533	383	147	3
30-34	398	248	150	-
35-39	242	155	87	-
40-44	110	61	49	-
45+	3	-	3	-
Not stated	-	-	-	-

Dash (-) represents zero.

Due to revisions in the database, data may differ slightly from those previously published by the Bureau of Health Policy and Vital Statistics.

Graph 7
INDUCED ABORTIONS OCCURRING IN IDAHO
Age by Marital Status
Three-Year Total, 2002-2004

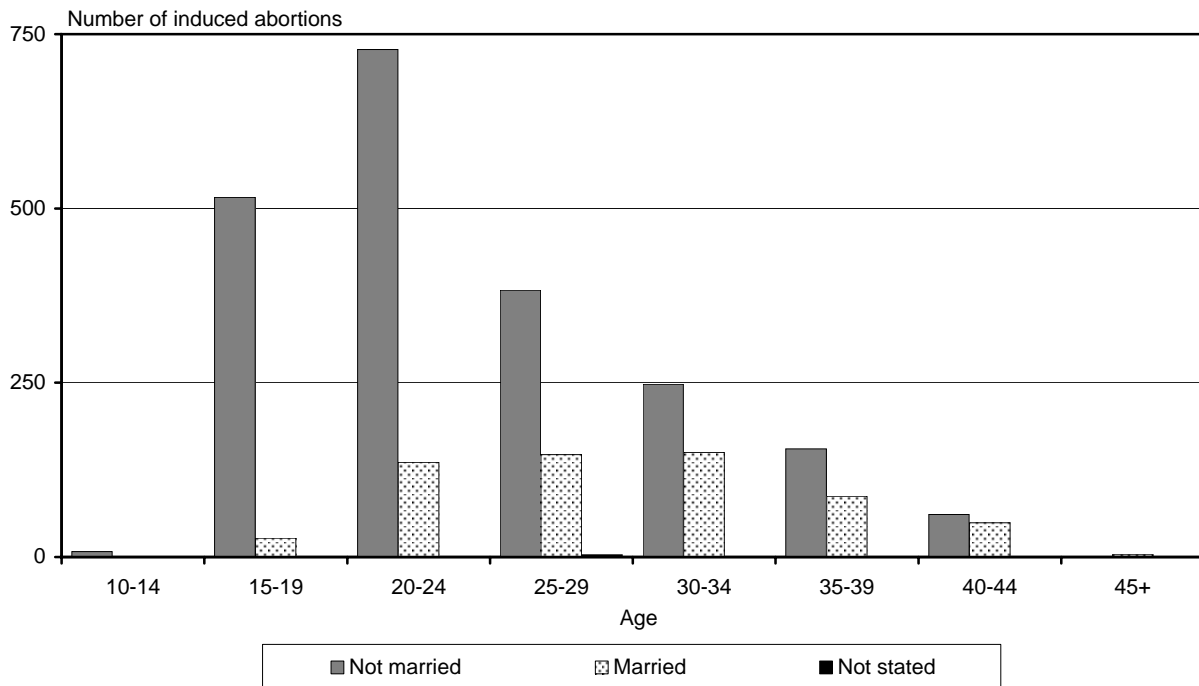


Table 7
INDUCED ABORTIONS OCCURRING IN IDAHO
Age by Number of Previous Induced Abortions
Three-Year Total, 2002-2004

AGE	TOTAL IN IDAHO	NUMBER OF PREVIOUS INDUCED ABORTIONS				
		None	1	2	3+	Not Stated
TOTAL IN IDAHO	2,703	2,043	490	116	41	13
10-14	9	9	-	-	-	-
15-19	543	494	40	5	2	2
15-17	181	176	4	1	-	-
18-19	362	318	36	4	2	2
20-24	865	683	147	24	6	5
25-29	533	369	124	32	6	2
30-34	398	249	104	31	11	3
35-39	242	163	51	14	14	-
40-44	110	73	24	10	2	1
45+	3	3	-	-	-	-
Not stated	-	-	-	-	-	-

Dash (-) represents zero.

Due to revisions in the database, data may differ slightly from those previously published by the Bureau of Health Policy and Vital Statistics.

Graph 8
INDUCED ABORTIONS OCCURRING IN IDAHO
Age by Number of Previous Induced Abortions
Three-Year Total, 2002-2004

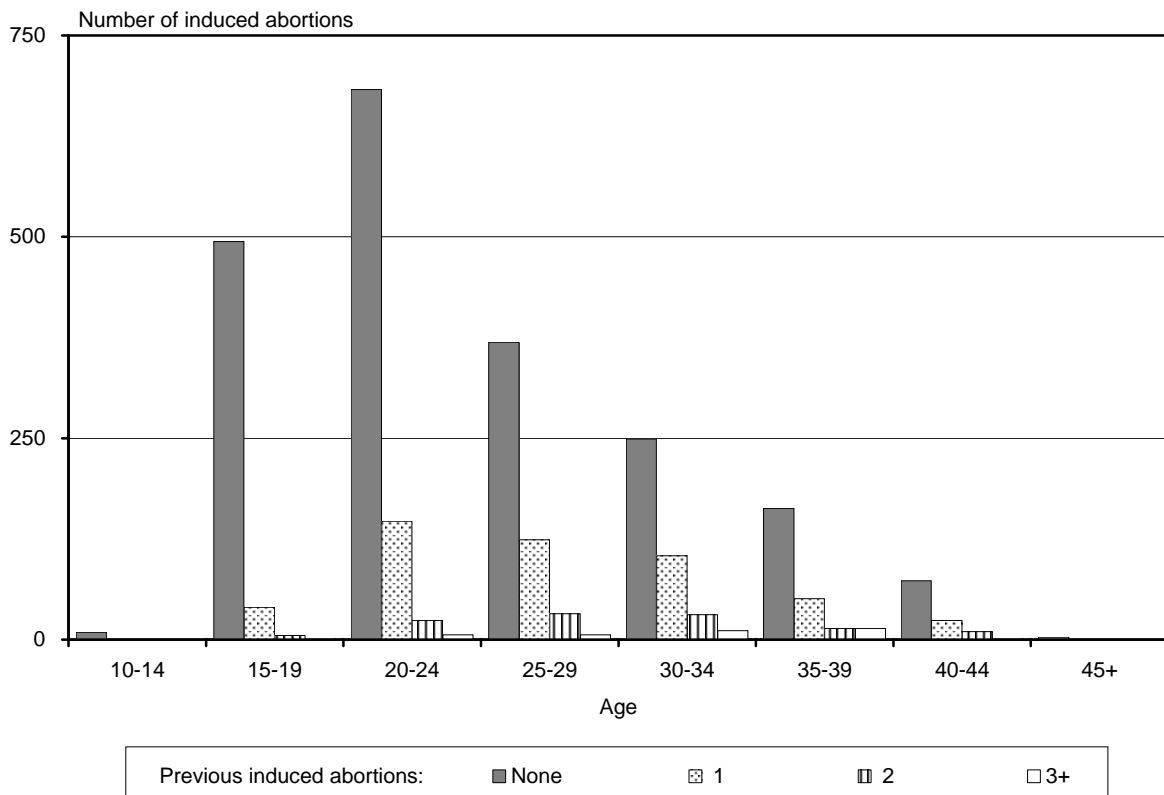


Table 8
INDUCED ABORTIONS OCCURRING IN IDAHO
Patient Educational Materials Provided
1994-2004

Were Patient Educational Materials Provided?

Year	Yes	No	Unknown	Total
1994	1,008	1	38	1,047
1995	912	21	37	970
1996	957	33	32	1,022
1997	840	2	36	878
1998	827	10	51	888
1999	815	16	36	867
2000	745	20	36	801
2001	665	30	43	738
2002	797	9	23	829
2003	867	-	44	911
2004	933	-	30	963

Table 9
INDUCED ABORTIONS OCCURRING IN IDAHO
Informed Consent, Aged <18
2004

Total Abortions Aged <18	70
TERMINATION PERFORMED FOLLOWING:	
Written informed consent of a parent and the minor	68
Written informed consent of emancipated minor for herself	-
Written informed consent of minor for herself pursuant to court order granting minor right to self-consent	2
Written informed consent of court pursuant to order stating abortion in best interests of minor, despite absence of parental consent	-

Due to revisions in the database, data may differ slightly from those previously published by the Bureau of Health Policy and Vital Statistics.

INDUCED ABORTIONS TO IDAHO RESIDENTS 1994-2004

Definition

Induced abortions to Idaho residents include:

- 1) The number of reported abortions occurring in Idaho to Idaho residents; and,
- 2) The number of reported abortions occurring in other states to Idaho residents.

Limitations

In 1984, an interstate data exchange program for abortion data was initiated nationwide, whereby Idaho can obtain non-identifying information about abortions occurring to Idaho residents in other states. However, not all states have regularly provided the Bureau of Health Policy and Vital Statistics with non-identifying, detailed reports on abortions obtained by Idaho residents. From 1989-2001, with the exception of 1991 and 1998, reports were not forwarded from Montana for Idaho residents who obtained abortions in Montana. In 2003, Montana forwarded reports for the missing years and they were added to our databases. Those reports are included in the data published in this report and in any data published after August 2003. The total number of abortions occurring to Idaho residents may differ from the vital statistics annual reports due to late reporting by Montana and revisions to the database.

In cases where the state of residence is reported without a city or county specified and the resident state is different from the state of occurrence, the abortion record is allocated to the largest city of the state of residence. In Idaho, the largest city is Boise in Ada County and in 2004, there were six out-of-state records allocated to Ada County.

The reader is cautioned that the database contains small numbers; therefore, percents, rates, and trends tend to randomly fluctuate.

Summary

From 1994 to 2004, the number of abortions to Idaho residents ranged from a low of 1,473 in 2001 to a high of 1,806 in 1996. Overall, the number of abortions to Idaho residents declined by 138 (7.9 percent) during this time period. In all but one year, 2001, the majority of abortions to Idaho residents occurred in Idaho. From 1994 to 2004, most abortions to Idaho residents which occurred out of state occurred in Washington. Of the 690 abortions to Idaho residents which occurred out of state in 2004, 533 (77.2 percent) occurred in Washington.

The abortion rate per 1,000 females aged 15-44 decreased 21.4 percent from 7.0 in 1994 to 5.5 per 1,000 females in 2004. At the same time, the abortion ratio per 1,000 live births declined 28.3 percent from 100.1 per 1,000 live births in 1994 to 71.8 in 2004.

Table 10
INDUCED ABORTIONS TO IDAHO RESIDENTS
District and County of Residence
1994-2004

RESIDENCE	1994	1995	1996	1997	1998	1999	2000	2001	2002	2003	2004
TOTAL IDAHO RESIDENT	1,756	1,768	1,806	1,623	1,636	1,561	1,553	1,473	1,493	1,620	1,618
District 1	397	418	407	390	395	377	465	428	391	395	357
District 2	202	216	230	204	193	182	166	174	158	187	172
District 3	203	169	180	150	198	161	153	149	157	191	183
District 4	580	635	660	603	617	619	536	505	558	603	625
District 5	149	113	142	112	95	84	99	91	91	124	147
District 6	122	114	106	78	89	76	62	61	70	62	83
District 7	103	103	81	86	49	62	72	65	68	58	51
Ada	534	591	615	558	579	571	505	471	526	571	586
Adams	1	4	2	-	2	3	1	3	2	3	1
Bannock	90	83	73	42	63	53	45	40	46	40	63
Bear Lake	-	3	1	2	1	1	1	2	1	2	1
Benewah	17	17	19	11	16	14	19	13	13	11	13
Bingham	17	19	17	17	12	10	10	11	11	10	12
Blaine	49	39	60	53	40	33	41	42	35	51	61
Boise	10	5	5	3	7	7	2	4	4	1	-
Bonner	62	59	77	63	61	66	82	82	68	57	55
Bonneville	69	55	49	52	27	35	40	38	45	38	33
Boundary	16	13	9	12	13	11	18	7	7	10	9
Butte	-	-	1	1	3	-	-	-	1	2	1
Camas	-	1	-	1	-	-	-	-	-	-	-
Canyon	157	133	140	125	162	135	129	127	131	160	150
Caribou	5	3	1	2	2	5	3	1	1	3	1
Cassia	13	6	8	8	6	4	6	7	-	6	7
Clark	-	1	-	-	-	-	1	-	1	-	-
Clearwater	12	8	16	9	10	10	9	8	10	7	7
Custer	3	6	5	3	4	6	4	4	4	4	3
Elmore	22	24	23	25	24	32	20	17	22	21	23
Franklin	6	1	6	5	4	7	-	4	-	3	3
Fremont	7	5	3	3	-	5	6	2	2	2	2
Gem	19	6	13	10	7	7	6	4	11	8	6
Gooding	6	4	10	5	2	8	8	2	7	7	7
Idaho	16	20	14	19	12	7	10	13	9	12	5
Jefferson	3	6	4	6	2	3	4	5	3	2	2
Jerome	17	10	13	7	7	6	6	7	8	9	13
Kootenai	277	305	268	280	276	263	315	308	281	295	260
Latah	84	97	109	89	84	85	76	73	83	100	73
Lemhi	14	15	12	10	10	11	12	10	6	10	6
Lewis	9	6	4	6	6	5	4	6	5	6	7
Lincoln	4	2	2	3	-	-	3	-	-	1	6
Madison	6	4	2	4	1	2	2	3	3	-	3
Minidoka	10	13	8	6	9	5	5	5	7	10	9
Nez Perce	81	85	87	81	81	75	67	74	51	62	80
Oneida	1	-	1	4	1	-	-	-	2	1	2
Owyhee	5	4	6	5	7	5	5	1	3	4	8
Payette	16	13	14	8	16	9	9	13	5	12	14
Power	3	5	6	5	3	-	3	3	8	1	-
Shoshone	25	24	34	24	29	23	31	18	22	22	20
Teton	1	11	6	8	5	-	3	3	4	2	2
Twin Falls	50	38	41	29	31	28	30	28	34	40	44
Valley	14	15	17	17	7	9	9	13	6	10	16
Washington	5	9	5	2	4	2	3	1	5	4	4

Dash (-) represents zero.

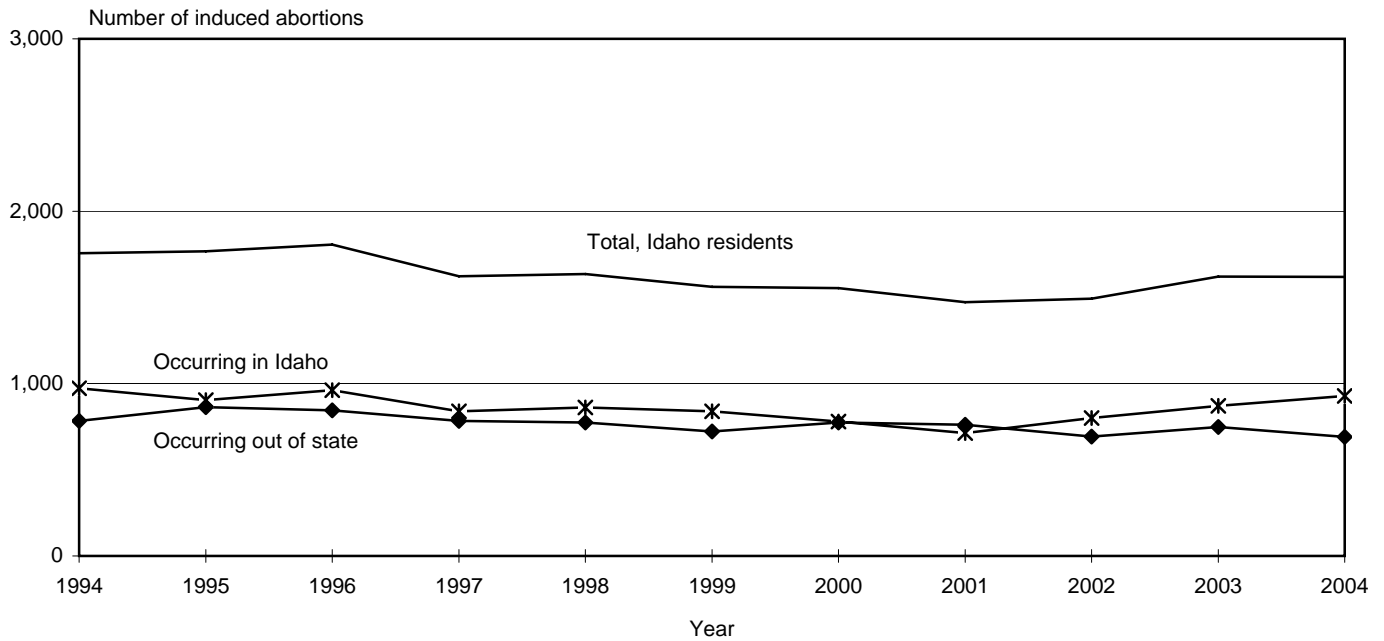
Due to revisions in the database, data may differ slightly from those previously published by the Bureau of Health Policy and Vital Statistics.

Table 11
INDUCED ABORTIONS TO IDAHO RESIDENTS
State of Occurrence
1994-2004

STATE OF OCCURRENCE	1994	1995	1996	1997	1998	1999	2000	2001	2002	2003	2004
TOTAL IDAHO RESIDENT	1,756	1,768	1,806	1,623	1,636	1,561	1,553	1,473	1,493	1,620	1,618
Abortions in Idaho	972	904	962	840	862	839	779	712	800	871	928
Abortions out of state	784	864	844	783	774	722	774	761	693	749	690
Montana	40	62	66	68	60	46	43	43	16	25	19
Oregon	24	32	36	49	61	67	61	67	60	57	49
Utah	139	150	117	92	86	74	64	71	70	79	87
Washington	580	618	623	572	562	533	605	575	546	586	533
All others	1	2	2	2	5	2	1	5	1	2	2

Due to revisions in the database, data may differ from those previously published by the Bureau of Health Policy and Vital Statistics.

Graph 9
INDUCED ABORTIONS TO IDAHO RESIDENTS
Occurring in Idaho and Out of State
1994-2004



Due to revisions in the database, data may differ from those previously published by the Bureau of Health Policy and Vital Statistics.

Table 12
INDUCED ABORTIONS TO IDAHO RESIDENTS
Age, Abortion Rate, and Abortion Ratio
1994-2004

AGE	1994	1995	1996	1997	1998	1999	2000	2001	2002	2003	2004
TOTAL IDAHO RESIDENT	1,756	1,768	1,806	1,623	1,636	1,561	1,553	1,473	1,493	1,620	1,618
Age:											
10-14	5	16	21	16	13	7	12	10	9	12	6
15-19	431	435	465	406	384	394	346	362	326	336	323
15-17	170	183	168	166	139	125	129	128	131	105	127
18-19	261	252	297	240	245	269	217	234	195	231	196
20-24	552	508	504	480	524	471	502	453	485	553	530
25-29	341	355	347	325	324	289	312	258	286	303	327
30-34	222	229	252	184	201	205	179	192	187	221	223
35-39	141	170	163	161	144	138	147	129	139	133	141
40-44	56	46	52	47	40	50	51	55	57	58	63
45+	2	8	2	4	4	7	2	9	3	3	3
Not stated	6	1	-	-	2	-	2	5	1	1	2
Abortion rate per 1,000 females in age group:											
Total ¹	7.0	6.9	6.9	6.1	6.1	5.8	5.6	5.2	5.3	5.6	5.5
Age:											
10-14	0.1	0.3	0.4	0.3	0.3	0.1	0.2	0.2	0.2	0.2	0.1
15-19	8.9	8.5	8.8	7.5	7.0	7.2	6.3	6.5	6.1	6.4	6.1
15-17	5.8	6.0	5.3	5.2	4.3	4.0	4.0	3.9	4.2	3.4	4.1
18-19	13.5	12.3	13.9	10.9	10.7	11.6	9.5	10.1	9.0	10.7	9.0
20-24	13.9	12.2	11.9	10.9	11.5	10.0	11.1	9.9	9.4	10.2	9.5
25-29	10.2	10.3	9.6	8.7	8.4	7.2	7.6	6.1	6.9	7.1	7.4
30-34	5.4	5.7	6.5	4.9	5.4	5.5	4.3	4.6	4.3	5.1	5.1
35-39	3.1	3.7	3.5	3.5	3.2	3.1	3.1	2.7	3.1	3.0	3.2
40-44	1.3	1.0	1.1	1.0	0.9	1.1	1.0	1.1	1.1	1.2	1.3
45+	0.1	0.2	0.0	0.1	0.1	0.2	0.0	0.2	0.1	0.1	0.1
Not stated	NA	NA	NA	NA	NA	NA	NA	NA	NA	NA	NA
Abortion ratio per 1,000 live births in age group:											
Total ²	100.1	98.2	97.3	87.6	84.5	78.6	76.5	71.2	71.2	74.3	71.8
Age:											
10-14	122.0	381.0	807.7	444.4	464.3	225.8	750.0	625.0	562.5	631.6	428.6
15-19	186.7	174.8	186.9	174.1	156.7	164.4	147.9	154.8	156.9	161.8	156.9
15-17	206.3	223.7	201.7	222.5	177.3	157.4	192.8	191.3	225.1	192.7	241.9
18-19	175.8	150.8	179.5	151.3	147.1	167.9	129.9	140.1	130.3	150.9	127.9
20-24	103.0	93.6	88.7	86.1	86.1	76.0	79.2	71.5	72.2	79.8	73.7
25-29	71.0	71.2	65.7	61.4	58.1	50.1	53.8	44.5	47.2	46.8	48.5
30-34	65.2	68.1	74.7	52.9	59.0	56.8	46.9	50.3	46.0	52.4	51.5
35-39	104.2	120.8	115.4	107.2	97.8	91.3	90.6	79.5	84.3	77.8	79.3
40-44	223.1	172.3	190.5	152.6	128.2	152.0	144.9	156.3	159.7	168.6	165.4
45+	105.3	381.0	95.2	363.6	285.7	304.3	117.6	529.4	115.4	150.0	96.8
Not stated	NA	NA	NA	NA	NA	NA	NA	NA	NA	NA	NA

1. Total abortion rate: Number of induced abortions to women of all ages per 1,000 females 15-44 years of age. Abortion rates for 1994-1999 are based on population estimates from the U.S. Census Bureau, Internet release August 30, 2000. Rates for 2000 are based on April 1, 2000 Census data, Internet release August 1, 2001. Rates for 2001-2002 are based on the National Center for Health Statistics, estimates of the July 1, 2000-July 1, 2002, United States resident population from the Vintage 2002 postcensal series, prepared under a collaborative arrangement with the U.S. Census Bureau, Internet release date August 8, 2003. Rates for 2003 and 2004 are based on July 1, 2003 and July 1, 2004 population estimates from the U.S. Census Bureau and National Center for Health Statistics, Internet release dates August 18, 2004 and September 9, 2005, respectively.

2. Total abortion ratio: Number of induced abortions per 1,000 live births.

Due to revisions in the database, data may differ slightly from those previously published by the Bureau of Health Policy and Vital Statistics.

Dash (-) represents zero or a rate that rounds to less than 0.1.

NA - not applicable.

Table 13
INDUCED ABORTIONS TO IDAHO RESIDENTS
Termination Procedure by Length of Gestation
Three-Year Total, 2002-2004

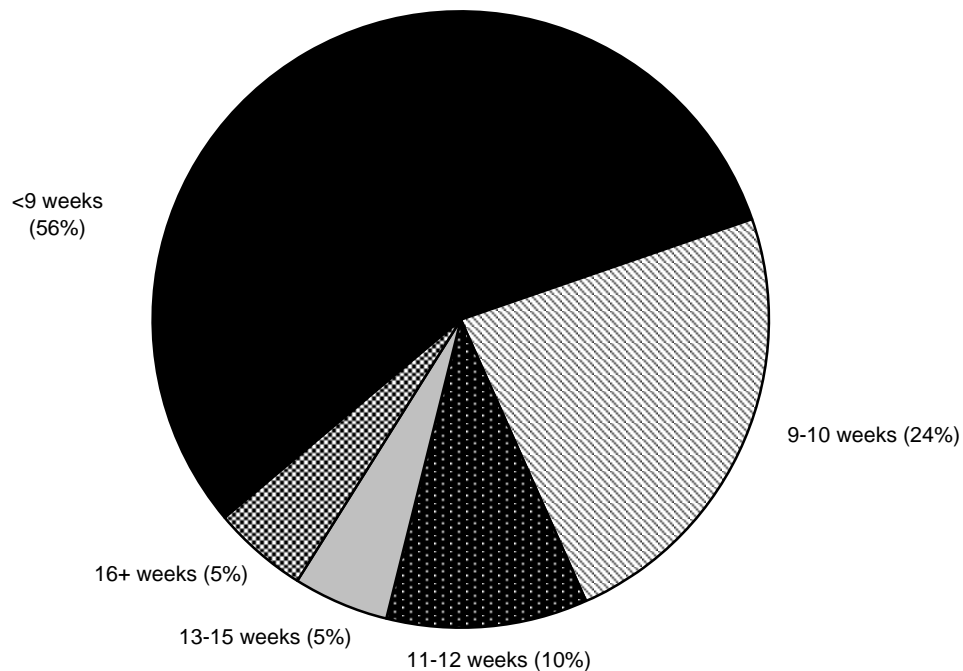
TERMINATION PROCEDURE*	TOTAL RESIDENTS OF IDAHO	WEEKS OF GESTATION							
		<9	9-10	11-12	13-15	16-20	21-24	25+	Not Stated
TOTAL RESIDENTS OF IDAHO	4,731	2,631	1,113	491	237	179	48	9	23
Suction curettage	4,333	2,478	1,107	486	194	45	8	1	14
Medical (nonsurgical)	162	145	1	2	2	5	3	2	2
Dilation and evacuation (D&E)	175	1	1	1	37	95	30	5	5
Intra-uterine instillation (saline / prostaglandin)	16	1	-	-	-	8	7	-	-
Sharp curettage (D&C)	16	1	2	1	1	10	-	-	1
Hysterotomy / Hysterectomy	1	-	-	-	-	1	-	-	-
Other	6	3	-	-	-	2	-	1	-
Not stated	22	2	2	1	3	13	-	-	1

* Only the primary procedure that terminated the pregnancy is shown in the table. There may be additional procedures used for the termination.

Dash (-) represents zero.

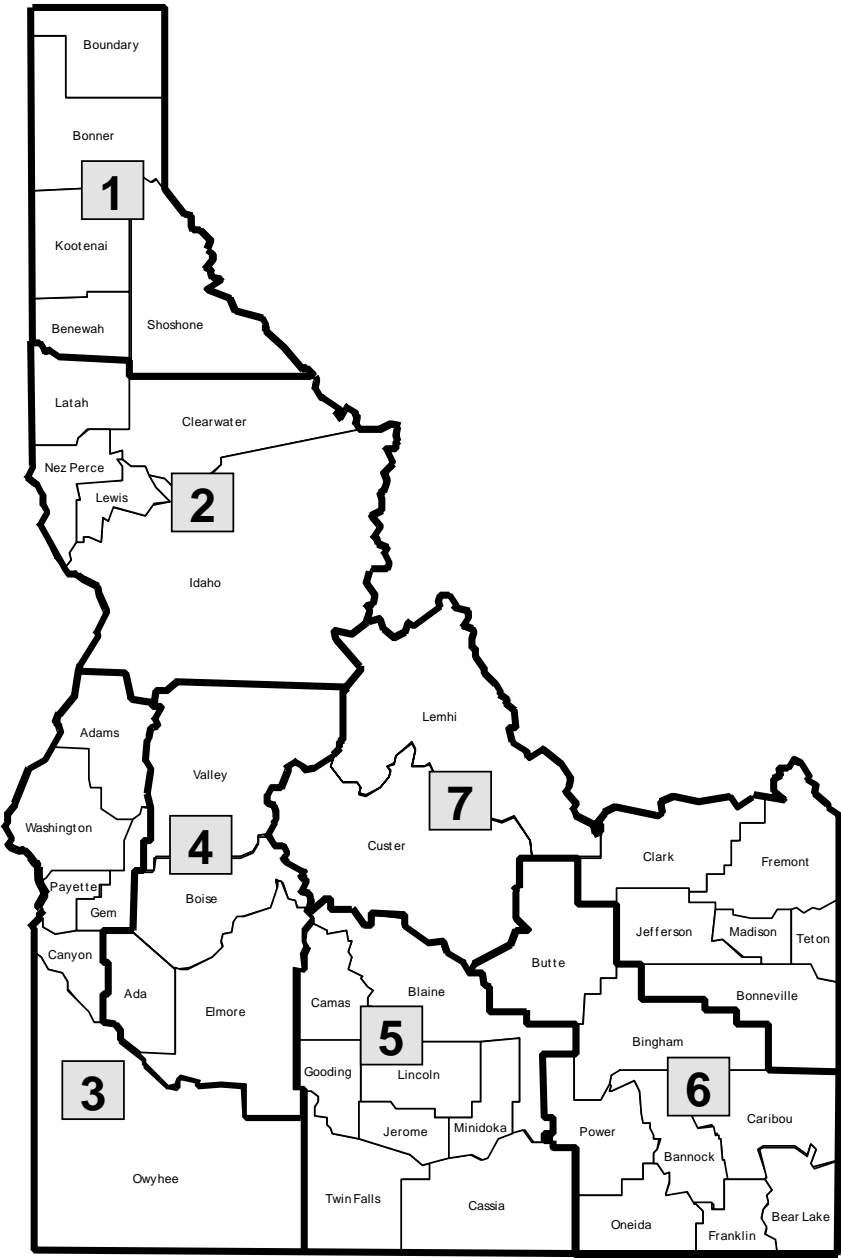
Due to revisions in the database, data may differ slightly from those previously published by the Bureau of Health Policy and Vital Statistics.

Graph 10
INDUCED ABORTIONS TO IDAHO RESIDENTS
Length of Gestation
Three-Year Total, 2002-2004



Note: Percent distributions are based on records with known data for length of gestation.

APPENDIX
Counties Comprising Idaho Public Health Districts



District 1	District 2	District 3	District 4	District 5	District 6	District 7
Benewah Bonner Boundary Kootenai Shoshone	Clearwater Idaho Latah Lewis Nez Perce	Adams Canyon Gem Owyhee Payette Washington	Ada Boise Elmore Valley	Blaine Camas Cassia Gooding Jerome Lincoln Minidoka Twin Falls	Bannock Bear Lake Bingham Butte Caribou Franklin Oneida Power	Bonneville Clark Custer Fremont Jefferson Lemhi Madison Teton