

**TEEN PREGNANCY SUMMARY**

**IDAHO**

**1999-2008**

**Bureau of Vital Records and Health Statistics  
Division of Health  
Idaho Department of Health and Welfare**

**April 2010**

## TABLE OF CONTENTS

	<u>Page</u>
Definition .....	1
Summary .....	2
Teen pregnancy numbers and rates by age groups, < 15, 15-17, 18-19, 15-19 and year, 1999-2008 ( <i>Idaho</i> ) .....	6
Teen pregnancy numbers and percents by pregnancy outcomes and age groups, < 15, 15-17, 18-19, 15-19 and year, 1999-2008 ( <i>Idaho</i> ) .....	7
Teen pregnancy numbers and rates by pregnancy outcomes and age groups, < 15, 15-17, 18-19, 15-19 and year, 1999-2008 ( <i>Idaho</i> ) .....	8
Teen pregnancy numbers and rates for teens aged 15-17 by year, 1999-2008 ( <i>Idaho, districts, and counties</i> ) .....	9
Teen pregnancy three-year aggregate numbers and average annual rates for teens aged 15-17, 2000-2002, 2003-2005, and 2006-2008 ( <i>Idaho, districts, and counties</i> ) ....	12
Teen pregnancy rates, teens aged 15-17 by year, 2006-2008 ( <i>Idaho and district graph</i> ) ....	13
Teen pregnancy numbers and rates for teens aged 18-19 by year, 1999-2008 ( <i>Idaho, districts, and counties</i> ) .....	14
Teen pregnancy three-year aggregate numbers and average annual rates for teens aged 18-19, 2000-2002, 2003-2005, and 2006-2008 ( <i>Idaho, districts, and counties</i> ) ....	17
Teen pregnancy rates, teens aged 18-19 by year, 2006-2008 ( <i>Idaho and district graph</i> ) ....	18
Teen pregnancy three-year aggregate numbers and average annual rates by race and ethnicity, teens aged 15-19, 2006-2008 ( <i>Idaho and district</i> ) .....	19
Teen live births three-year aggregate numbers by father's age and mother's age, 2006-2008 ( <i>Idaho</i> ) .....	20
Teen live births three-year aggregate numbers by mother's marital status and age, 2006-2008 ( <i>Idaho</i> ) .....	20
 <b><u>Appendix</u></b>	
Counties comprising Idaho public health districts .....	21
Teen female population estimates by age groups, < 15, 15-17, 18-19, 15-19 by year, 1999-2008 ( <i>Idaho, districts, and counties</i> ) .....	22

## IDAHO TEEN PREGNANCY 1999-2008

### Definition

Idaho teen pregnancy statistics include live births, induced terminations, and reportable stillbirths. Only those fetal deaths with a gestational period of 20 or more weeks or which weigh 350 or more grams are required to be reported under Idaho law.

PREGNANCY RATE: number of pregnancies per 1,000 females in the corresponding age group. For example, the pregnancy rate for females aged 15 to 19 is calculated:

$$\frac{\text{Live births + induced terminations + stillbirths among females aged 15 to 19}}{\text{Number of females aged 15 to 19}} \times 1,000$$

Statistics shown in this report are based on pregnancies among Idaho teens. The live birth, induced termination, or stillbirth may have occurred in Idaho or out of state. Out-of-state records for Idahoans are provided to the Idaho Bureau of Vital Records and Health Statistics to be included in Idaho statistics.

Teen pregnancy numbers and rates for the U.S. are based on live births, induced terminations, and all spontaneous fetal losses from recognized pregnancies of all gestational periods. National rates based on this definition are not comparable with Idaho rates because of the inclusion of all fetal losses in the national rate. In order for U.S. and Idaho rates to be comparable, fetal losses are subtracted from U.S. data. Stillbirths are included for Idaho data only, but they comprise a negligible portion of the total (0 to 1 percent of teen pregnancies), so Idaho and recalculated U.S. pregnancy rates below are considered to be comparable.

The latest year U.S. rates are available is for 2005. Below, U.S. rates per 1,000 teens in the corresponding age group are shown for 2005 (non-recalculated and recalculated), and Idaho rates are provided for 2005 and 2008 (latest year available).

Teens Aged 15-17	Live Birth Rate	Induced Termination Rate	U.S. Fetal Loss / Idaho Stillbirth Rate	Pregnancy Rate
U.S., 2005	21.4	11.4	7.4	40.2*
U.S., 2005 recalculated	21.4	11.4	NI	32.8
Idaho, 2005	16.8	4.0	0.0	20.8
Idaho, 2008	19.9	3.9	0.1	23.8

Teens Aged 18-19	Live Birth Rate	Induced Termination Rate	U.S. Fetal Loss / Idaho Stillbirth Rate	Pregnancy Rate
U.S., 2005	69.9	31.0	16.7	117.7*
U.S., 2005 recalculated	69.9	31.0	NI	100.9
Idaho, 2005	68.6	10.6	0.6	79.7
Idaho, 2008	72.9	12.1	0.5	85.5

\* U.S. rate based on live births, induced terminations, and all fetal losses is not comparable with Idaho rate.

NI – not included

## Summary

### Pregnancy Outcome

In 2008, there were 2,697 pregnancies among Idaho teens under the age of 20. There were 25 pregnancies to teens under the age of 15, 781 pregnancies among teens aged 15 to 17 and 1,891 to teens aged 18 to 19.

Of the 25 pregnancies among young teens in 2008, 72.0 percent resulted in a live birth, 24.0 percent resulted in an induced termination, and 4.0 percent resulted in a stillbirth. The pregnancy outcome for teens aged 15 to 17 was 83.4 percent live birth, 16.3 percent induced termination, and less than 1 percent stillbirth in 2008. The pregnancy outcome for teens aged 18 to 19 was similar to teens aged 15 to 17: 85.2 percent live birth, 14.2 percent induced termination, and less than 1 percent stillbirth. See tables on page 7 for number and percent of pregnancy outcomes by age group and year from 1999 to 2008.

Live birth, induced termination, and stillbirth rates by age group and year from 1999 to 2008 are shown on page 8.

### 1999 to 2008

The teen pregnancy number and rate declined from 1999 to 2008 for females under the age of 15 and females aged 15 to 17, while the number and rate increased for females aged 18 to 19. For young teens under the age of 15, the number of pregnancies ranged from a low of 20 in 2004 and a high of 38 in 1999. The pregnancy rate for the young teen group decreased 37.5 percent in the ten year period.

From 1999 to 2008, the number of pregnancies among teens aged 15 to 17 declined 15.7 percent from 926 to 781 and the rate declined 18.8 percent from 29.3 per 1,000 to 23.8 per 1,000. During the same time period, the number of pregnancies among older teens aged 18 to 19 increased by 12 (0.6 percent increase) and the rate increased by 5.8 percent from 80.8 per 1,000 to 85.5 per 1,000.

Among teens aged 15 to 17 from 1999 to 2008:

- District 4 had the highest rate decrease (-40.6 percent) from 28.6 to 17.0 per 1,000
- District 5 had the highest rate increase (+20.5 percent) from 29.2 to 35.2 per 1,000

Among teens aged 18 to 19 from 1999 to 2008:

- District 2 had the highest rate decrease (-32.9 percent) from 67.5 to 45.3 per 1,000
- District 3 had the highest rate increase (+48.2 percent) from 103.4 to 153.2 per 1,000

### District of Residence

Teen pregnancy numbers and rates are provided by district and county of residence by year from 1999 to 2008. Idaho is a relatively small state with relatively small numbers of pregnancies by age and residency. Rates are sensitive to this and can fluctuate when categorized by age, county, district, and single year. Therefore, rates are provided by district and county of residence in three-year increments, 2000 to 2002, 2003 to 2005, and 2006 to 2008. Aggregating years helps stabilize this fluctuation and give a more accurate picture of the data.

In reviewing rates for females aged 15 to 17 in three-year increments, the three-year rates in District 3 were the highest in all three time periods, followed by District 5. In latest time period shown, 2006 to 2008, the three-year rates ranged from a low of 18.2 per 1,000 in District 2 and District 4 to a high of 37.1 per 1,000 in District 3. See table on page 12 for three-year numbers and average annual rates by county and district for teens aged 15 to 17.

<b>Three-Year Rates for Females Aged 15 to 17 (2006 to 2008)</b>			
District of Residence	Three-Year Rate Significantly Higher Than Idaho*	Three-Year Rate Not Significantly Different Than Idaho	Three-Year Rate Significantly Lower Than Idaho*
<b>Idaho</b>		<b>23.5</b>	
District 1			18.8
District 2			18.2
District 3	37.1		
District 4			18.2
District 5	31.2		
District 6			19.9
District 7		20.4	

In 2000-2002, 2003-2005, and 2006-2008, District 3 had the highest teen pregnancy rate for females aged 18 to 19. Three-year rates in 2006 to 2008 for females aged 18 to 19 ranged from a low of 40.2 per 1,000 in District 7 to a high of 154.3 per 1,000 in District 3.

<b>Three-Year Rates for Females Aged 18 to 19 (2006-2008)</b>			
District of Residence	Three-Year Rate Significantly Higher Than Idaho*	Three-Year Rate Not Significantly Different Than Idaho	Three-Year Rate Significantly Lower Than Idaho*
<b>Idaho</b>		<b>85.8</b>	
District 1	101.0		
District 2			44.5
District 3	154.3		
District 4	95.8		
District 5	122.9		
District 6		80.7	
District 7			40.2

\*Difference between Idaho rate and District rate is statistically significant at the 0.05 level.

## County of Residence

Among females aged 15 to 17 from 2006 to 2008, Clark County had the highest three-year rate with 46.0 per 1,000 followed by Minidoka County (44.7 per 1,000), and Jerome County (43.1 per 1,000). The counties with the lowest three-year rates in 2006 to 2008 were Oneida (no pregnancies), Caribou (1.8 per 1,000), and Custer (3.6 per 1,000).

Among teens aged 18 to 19, Gooding County had the highest three-year rate with 184.7 per 1,000 followed by Jerome County (167.6 per 1,000), and Canyon County (165.3 per 1,000). The counties with the lowest three-year rates in 2006 to 2008 were Madison (7.5 per 1,000), Latah (19.9 per 1,000), and Custer (56.6 per 1,000).

As a special note about Madison County, the population estimates for females aged 18 to 19 changed substantially from 1999 to 2008. From 1999 to 2004, the female teen population decreased from 3,403 to 901. In 2005, there was a major increase in the enrollment at a university in Madison County and the population among females aged 18 to 19 increased from 2,993 in 2005 to 3,946 in 2008. For this reason, the rates for Madison County seem inconsistent with the number of pregnancies among residents of the county. In 2003 to 2005, there were 77 pregnancies and the average annual rate was 15.7 per 1,000; in 2006 to 2008, the number of pregnancies increased to 86 pregnancies, yet the average annual rate decreased to 7.5 per 1,000 due to the increase in the population. Madison is not the only county in which the population estimates fluctuated among female teens. Population estimates by age group and county are provided on pages 22-26.

## Race and Ethnicity

From 2006 to 2008, the race and Hispanic origin of Idaho females aged 15 to 19 consisted of 84.8 percent White, non-Hispanics, 1.0 percent Black, non-Hispanics, 1.6 percent American Indian, non-Hispanics, 1.1 percent Asian and Pacific Islander, non-Hispanics, and 11.6 percent Hispanics. Among the 7,917 teen pregnancies to females aged 15 to 19, 69.1 percent were to White, non-Hispanics, 0.9 percent were to Black, non-Hispanics, 2.6 percent were to American Indian, non-Hispanics, 0.8 percent were to Asian and Pacific Islander, non-Hispanics, and 26.7 percent were to Hispanics. Three-year teen pregnancy rates by race and ethnicity were significantly higher than the total rate for American Indian, non-Hispanics and Hispanics. Three-year rates for White, non-Hispanics and Asian and Pacific Islander, non-Hispanics were significantly lower than the total rate. The rate for Black, non-Hispanics was lower than the total rate; however, the difference was not statistically significant. Rates by race, ethnicity, and district are provided on page 19.

<b>Three-Year Rates for Females Aged 15 to 19 (2006-2008)</b>			
Race and Ethnicity	Three-Year Rate Significantly Higher Than Total*	Three-Year Rate Not Significantly Different Than Total	Three-Year Rate Significantly Lower Than Total*
<b>Total, All Races and Hispanic Origin</b>		<b>48.2</b>	
White, non-Hispanic			39.3
Black, non-Hispanic		46.0	
American Indian, non-Hispanic	75.9		
Asian and Pacific Islander, non-Hispanic			35.3
Hispanic	111.3		

\*Difference between total rate and rate by race and Hispanic origin is statistically significant at the 0.05 level.

## Live births

Statistics for age of father are available on the Idaho birth certificate and stillbirth certificate, but not the induced termination record. The husband's information is included on the birth and stillbirth certificate if the mother was married at the time of delivery, conception, or any time between. If the mother was not married and a paternity acknowledgement was signed by the father, the information such as father's name and date of birth is recorded on the birth certificate. If the mother was not married and a paternity acknowledgement was not signed by the father, the information such as father's name and date of birth are not recorded on the birth certificate.

From 2006 to 2008, there were 53 live births among females under the age of 15. One birth certificate indicated the mother was married; 52 (98.1 percent) were not married. Among the births, 17 certificates (32.1 percent) had information regarding father's age. Two fathers were under the age of 15, 11 fathers were aged 15 to 17, two fathers were aged 18 to 19, and two fathers were aged 20 or older.

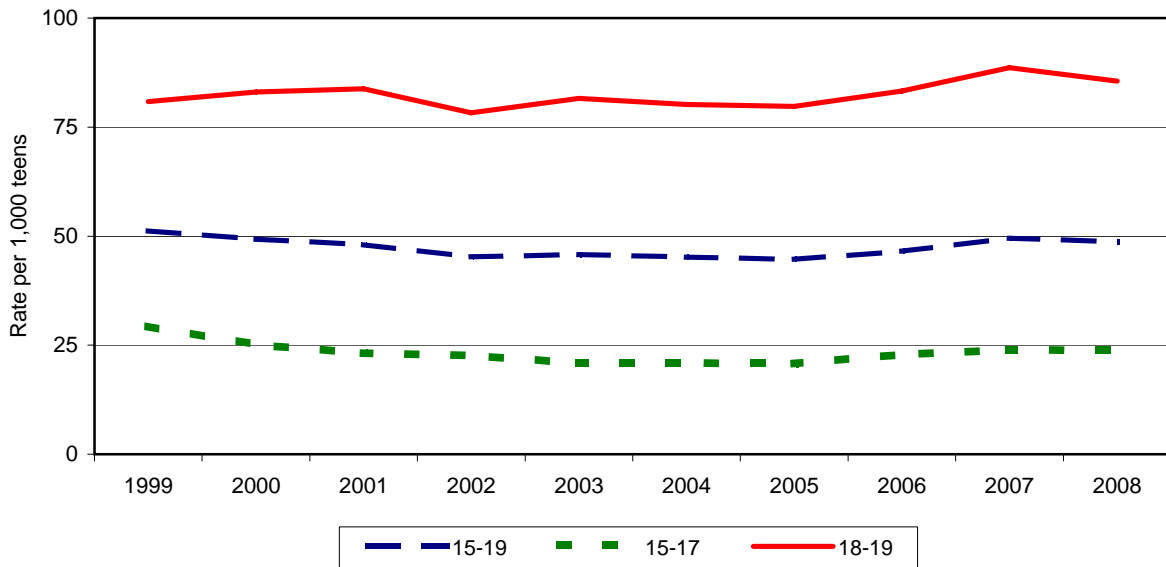
There were 1,876 live births among females aged 15 to 17 from 2006 to 2008. Of these live births, 330 were to mothers who were married (17.6 percent) and 1,253 records (66.8 percent) had information regarding father's age. Among the births with known father's age, five fathers were under the age of 15, 260 fathers were aged 15 to 17, 498 fathers were aged 18 to 19, and 490 fathers were aged 20 or older.

From 2006 to 2008, there were 4,794 live births among females aged 18 to 19; of these 1,633 mothers were married (34.1 percent) and 3,833 records (80.0 percent) had information regarding father's age. Among the births with known father's age, none were under the age of 15, 123 fathers were aged 15 to 17, 875 fathers were aged 18 to 19, and 2,835 fathers were aged 20 or older.

IDAHO RESIDENT TEEN PREGNANCIES  
Number of Pregnancies and Rates by Age  
1999-2008

YEAR	IDAHO RESIDENT PREGNANCIES BY AGE							
	<15		15-19		15-17		18-19	
	Number	Rate	Number	Rate	Number	Rate	Number	Rate
1999	38	0.8	2,805	51.2	926	29.3	1,879	80.8
2000	28	0.5	2,697	49.3	801	25.1	1,896	83.1
2001	31	0.6	2,586	48.1	736	23.2	1,850	83.8
2002	26	0.5	2,411	45.3	714	22.6	1,697	78.3
2003	31	0.6	2,421	45.8	653	20.9	1,768	81.6
2004	20	0.4	2,396	45.2	655	20.9	1,741	80.2
2005	28	0.6	2,387	44.7	659	20.8	1,728	79.7
2006	31	0.6	2,543	46.5	762	22.9	1,781	83.3
2007	25	0.5	2,702	49.5	788	23.9	1,914	88.7
2008	25	0.5	2,672	48.7	781	23.8	1,891	85.5
Percent change 1999 to 2008	-34.2	-37.5	-4.7	-4.9	-15.7	-18.8	0.6	5.8

Idaho Pregnancy Rates by Age  
1999-2008



Pregnancies include live births, induced abortions, and reportable stillbirths (only those fetal deaths with a gestational period of 20+ weeks or which weigh 350+ grams are required to be reported under Idaho law).

Pregnancy rate: Number of pregnancies per 1,000 females in corresponding age group. Rates for <15 age group are based on females aged 10-14.



**IDAHO RESIDENT TEEN PREGNANCY**  
**Number and Percent of Pregnancies by Pregnancy Outcome and Age**  
**1999-2008**

Females Under the Age of 15

	1999	2000	2001	2002	2003	2004	2005	2006	2007	2008
Pregnancies	38	28	31	26	31	20	28	31	25	25
Live Births	31	16	21	16	19	14	19	18	17	18
Induced Terminations	7	12	10	9	12	6	9	12	8	6
Stillbirths	-	-	-	1	-	-	-	1	-	1

	1999	2000	2001	2002	2003	2004	2005	2006	2007	2008
Live Births	81.6%	57.1%	67.7%	61.5%	61.3%	70.0%	67.9%	58.1%	68.0%	72.0%
Induced Terminations	18.4%	42.9%	32.3%	34.6%	38.7%	30.0%	32.1%	38.7%	32.0%	24.0%
Stillbirths	0.0%	0.0%	0.0%	3.8%	0.0%	0.0%	0.0%	3.2%	0.0%	4.0%

Females Aged 15-19

	1999	2000	2001	2002	2003	2004	2005	2006	2007	2008
Pregnancies	2,805	2,697	2,586	2,411	2,421	2,396	2,387	2,543	2,702	2,672
Live Births	2,396	2,339	2,208	2,078	2,076	2,058	2,019	2,148	2,260	2,262
Induced Terminations	394	346	362	326	336	323	356	380	430	395
Stillbirths	15	12	16	7	9	15	12	15	12	15

	1999	2000	2001	2002	2003	2004	2005	2006	2007	2008
Live Births	85.4%	86.7%	85.4%	86.2%	85.7%	85.9%	84.6%	84.5%	83.6%	84.7%
Induced Terminations	14.0%	12.8%	14.0%	13.5%	13.9%	13.5%	14.9%	14.9%	15.9%	14.8%
Stillbirths	0.5%	0.4%	0.6%	0.3%	0.4%	0.6%	0.5%	0.6%	0.4%	0.6%

Females Aged 15-17

	1999	2000	2001	2002	2003	2004	2005	2006	2007	2008
Pregnancies	926	801	736	714	653	655	659	762	788	781
Live Births	794	669	604	582	545	525	532	597	628	651
Induced Terminations	125	129	128	131	105	127	127	159	155	127
Stillbirths	7	3	4	1	3	3	-	6	5	3

	1999	2000	2001	2002	2003	2004	2005	2006	2007	2008
Live Births	85.7%	83.5%	82.1%	81.5%	83.5%	80.2%	80.7%	78.3%	79.7%	83.4%
Induced Terminations	13.5%	16.1%	17.4%	18.3%	16.1%	19.4%	19.3%	20.9%	19.7%	16.3%
Stillbirths	0.8%	0.4%	0.5%	0.1%	0.5%	0.5%	0.0%	0.8%	0.6%	0.4%

Females Aged 18-19

	1999	2000	2001	2002	2003	2004	2005	2006	2007	2008
Pregnancies	1,879	1,896	1,850	1,697	1,768	1,741	1,728	1,781	1,914	1,891
Live Births	1,602	1,670	1,604	1,496	1,531	1,533	1,487	1,551	1,632	1,611
Induced Terminations	269	217	234	195	231	196	229	221	275	268
Stillbirths	8	9	12	6	6	12	12	9	7	12

	1999	2000	2001	2002	2003	2004	2005	2006	2007	2008
Live Births	85.3%	88.1%	86.7%	88.2%	86.6%	88.1%	86.1%	87.1%	85.3%	85.2%
Induced Terminations	14.3%	11.4%	12.6%	11.5%	13.1%	11.3%	13.3%	12.4%	14.4%	14.2%
Stillbirths	0.4%	0.5%	0.6%	0.4%	0.3%	0.7%	0.7%	0.5%	0.4%	0.6%

**IDAHO RESIDENT TEEN PREGNANCY**  
**Number of Pregnancies and Rates by Pregnancy Outcome and Age**  
**1999-2008**

Number of Live Births

Age	1999	2000	2001	2002	2003	2004	2005	2006	2007	2008
<15	31	16	21	16	19	14	19	18	17	18
15-19	2,396	2,339	2,208	2,078	2,076	2,058	2,019	2,148	2,260	2,262
15-17	794	669	604	582	545	525	532	597	628	651
18-19	1,602	1,670	1,604	1,496	1,531	1,533	1,487	1,551	1,632	1,611

Live Birth Rate Per 1,000

Age	1999	2000	2001	2002	2003	2004	2005	2006	2007	2008
<15	0.6	0.3	0.4	0.3	0.4	0.3	0.4	0.3	0.3	0.3
15-19	43.7	42.7	41.0	39.0	39.3	38.8	37.8	39.3	41.4	41.2
15-17	25.2	21.0	19.0	18.4	17.5	16.8	16.8	17.9	19.0	19.9
18-19	68.9	73.2	72.7	69.0	70.7	70.6	68.6	72.5	75.6	72.9

Number of Induced Terminations

Age	1999	2000	2001	2002	2003	2004	2005	2006	2007	2008
<15	7	12	10	9	12	6	9	12	8	6
15-19	394	346	362	326	336	323	356	380	430	395
15-17	125	129	128	131	105	127	127	159	155	127
18-19	269	217	234	195	231	196	229	221	275	268

Induced Termination Rate Per 1,000

Age	1999	2000	2001	2002	2003	2004	2005	2006	2007	2008
<15	0.1	0.2	0.2	0.2	0.2	0.1	0.2	0.2	0.2	0.1
15-19	7.2	6.3	6.7	6.1	6.4	6.1	6.7	7.0	7.9	7.2
15-17	4.0	4.0	4.0	4.2	3.4	4.1	4.0	4.8	4.7	3.9
18-19	11.6	9.5	10.6	9.0	10.7	9.0	10.6	10.3	12.7	12.1

Number of Stillbirths

Age	1999	2000	2001	2002	2003	2004	2005	2006	2007	2008
<15	-	-	-	1	-	-	-	1	-	1
15-19	15	12	16	7	9	15	12	15	12	15
15-17	7	3	4	1	3	3	-	6	5	3
18-19	8	9	12	6	6	12	12	9	7	12

Stillbirth Rate Per 1,000

Age	1999	2000	2001	2002	2003	2004	2005	2006	2007	2008
<15	-	-	-	**	-	-	-	**	-	**
15-19	0.3	0.2	0.3	0.1	0.2	0.3	0.2	0.3	0.2	0.3
15-17	0.2	0.1	0.1	**	0.1	0.1	-	0.2	0.2	0.1
18-19	0.3	0.4	0.5	0.3	0.3	0.6	0.6	0.4	0.3	0.5

Rates for <15 age group are based on females aged 10-14.

\*\* Rate that rounds to less than 0.09 per 1,000.

IDAHO RESIDENT TEEN PREGNANCY  
Teens Aged 15 to 17  
Number and Rate by District and County of Residence, 1999-2002

RESIDENCE	1999		2000		2001		2002	
	Number	Rate	Number	Rate	Number	Rate	Number	Rate
IDAHO	926	29.3	801	25.1	736	23.2	714	22.6
District 1	136	33.4	126	30.1	92	21.8	99	23.3
District 2	35	17.0	35	16.3	46	22.2	49	24.3
District 3	195	39.6	180	38.8	175	37.1	154	31.6
District 4	212	28.6	168	22.0	151	19.4	144	18.4
District 5	122	29.2	135	31.7	122	29.5	104	25.5
District 6	125	27.3	81	17.7	73	16.6	79	18.9
District 7	101	23.3	76	17.0	77	17.5	85	19.5
Ada	173	26.3	137	20.6	119	17.5	127	18.6
Adams	3	31.9	-	-	1	12.7	-	-
Bannock	59	30.8	33	17.7	24	13.8	35	21.1
Bear Lake	3	17.4	2	8.3	1	4.2	1	4.7
Benewah	6	26.4	10	45.0	7	34.3	3	14.8
Bingham	44	32.6	31	22.5	34	24.8	29	22.0
Blaine	11	36.8	7	19.8	9	24.0	5	12.1
Boise	3	26.8	3	16.3	1	5.8	2	12.4
Bonner	26	29.2	28	31.7	17	18.6	13	14.0
Bonneville	56	25.0	44	18.7	41	17.7	54	23.4
Boundary	7	24.6	7	25.3	1	3.8	5	18.5
Butte	-	-	-	-	-	-	1	15.4
Camas	-	-	-	-	-	-	-	-
Canyon	150	44.2	140	44.8	133	41.5	121	35.7
Caribou	3	13.3	3	12.5	4	16.9	3	13.1
Cassia	19	28.4	19	29.2	12	18.9	13	22.0
Clark	-	-	1	33.3	-	-	1	40.0
Clearwater	5	21.8	1	4.4	5	23.7	3	15.0
Custer	1	9.9	1	9.4	2	17.1	1	8.7
Elmore	31	56.4	24	39.2	24	40.1	12	19.4
Franklin	9	22.5	6	16.0	5	14.2	3	9.1
Fremont	13	35.8	7	17.6	8	21.2	9	24.8
Gem	10	29.5	6	16.1	5	13.4	10	26.4
Gooding	14	38.6	17	44.5	12	33.6	19	55.1
Idaho	4	10.2	7	16.9	4	10.3	10	26.6
Jefferson	11	17.2	11	17.3	11	17.5	9	14.4
Jerome	13	27.1	17	33.1	16	31.6	14	28.5
Kootenai	77	33.3	76	30.2	59	23.0	74	28.8
Latah	8	13.2	6	9.3	7	11.2	9	14.7
Lemhi	3	16.1	2	10.2	5	25.9	-	-
Lewis	3	33.7	2	20.0	2	20.4	3	36.1
Lincoln	4	33.3	7	75.3	2	17.2	3	27.3
Madison	16	24.0	8	13.0	5	8.9	8	14.1
Minidoka	28	45.9	28	45.6	27	48.3	8	15.2
Nez Perce	15	20.2	19	25.1	28	37.3	24	32.3
Oneida	4	36.7	1	6.9	-	-	2	15.7
Owyhee	9	31.7	12	41.8	15	52.3	11	41.4
Payette	16	30.2	18	34.6	15	28.7	8	15.4
Power	3	10.1	5	20.5	5	19.8	5	21.2
Shoshone	20	55.4	5	17.4	8	29.0	4	14.9
Teton	1	8.2	2	15.2	5	32.9	3	17.1
Twin Falls	33	20.4	40	24.6	44	28.1	42	26.6
Valley	5	30.7	4	18.8	7	33.8	3	16.0
Washington	7	25.1	4	15.9	6	24.6	4	16.9

Pregnancies include live births, induced abortions, and reportable stillbirths.

Rate: number of pregnancies to females aged 15-17 per 1,000 females aged 15-17.

IDAHO RESIDENT TEEN PREGNANCY  
Teens Aged 15 to 17  
Number and Rate by District and County of Residence, 2003-2006

RESIDENCE	2003		2004		2005		2006	
	Number	Rate	Number	Rate	Number	Rate	Number	Rate
IDAHO	653	20.9	655	20.9	659	20.8	762	22.9
District 1	95	22.4	79	18.3	77	17.1	83	17.8
District 2	34	17.8	36	18.8	32	17.1	38	19.4
District 3	151	30.6	170	33.5	145	28.1	211	37.9
District 4	133	17.3	115	14.9	141	17.7	169	19.9
District 5	102	25.2	120	30.0	114	29.0	104	25.6
District 6	75	18.9	70	17.8	78	19.5	74	17.9
District 7	63	14.3	65	14.9	72	16.8	83	19.0
Ada	119	17.7	99	14.5	123	17.4	132	17.4
Adams	1	11.9	1	12.0	-	-	2	23.8
Bannock	23	14.6	29	18.4	41	25.7	38	22.8
Bear Lake	2	10.3	3	15.7	1	5.2	-	-
Benewah	5	23.7	4	18.9	10	50.8	10	50.0
Bingham	31	24.5	19	15.7	28	22.4	26	20.6
Blaine	9	20.4	8	17.2	10	23.0	11	24.4
Boise	3	16.9	-	-	3	16.5	1	5.9
Bonner	17	17.7	13	13.6	13	13.5	11	11.4
Bonneville	44	18.7	43	18.4	51	22.7	49	21.4
Boundary	4	15.3	3	11.5	2	7.5	2	7.2
Butte	-	-	4	66.7	-	-	-	-
Camas	-	-	-	-	1	43.5	1	41.7
Canyon	119	34.4	138	38.2	117	32.0	176	44.0
Caribou	3	14.9	2	9.8	1	5.4	-	-
Cassia	19	32.8	10	18.2	13	22.6	9	15.3
Clark	1	41.7	-	-	-	-	4	142.9
Clearwater	7	40.5	3	18.0	4	24.4	2	11.4
Custer	1	10.1	-	-	1	10.5	-	-
Elmore	10	16.9	11	18.8	10	17.8	30	53.3
Franklin	5	14.6	6	17.0	2	5.2	4	10.0
Fremont	3	9.0	4	13.2	6	19.7	8	25.1
Gem	8	21.4	6	15.8	6	16.1	7	17.8
Gooding	8	23.8	12	37.0	9	29.2	7	22.4
Idaho	4	11.1	6	16.0	4	10.5	6	15.0
Jefferson	7	10.9	12	18.9	6	9.4	8	12.5
Jerome	14	29.9	20	44.3	19	42.0	17	36.2
Kootenai	59	23.0	53	19.9	44	15.5	53	17.9
Latah	7	12.5	4	7.2	3	5.6	9	15.7
Lemhi	2	10.3	-	-	2	10.2	1	4.8
Lewis	2	23.5	3	39.5	2	26.7	1	13.2
Lincoln	2	14.9	4	31.5	1	8.0	3	25.4
Madison	3	5.2	4	6.8	5	8.4	10	16.9
Minidoka	17	33.6	23	44.7	19	40.3	21	44.6
Nez Perce	14	18.9	20	27.0	19	26.4	20	27.3
Oneida	3	25.2	2	17.1	2	18.2	-	-
Owyhee	8	31.5	13	49.2	9	32.6	7	24.7
Payette	11	21.4	11	21.8	11	20.7	13	22.8
Power	8	35.9	5	23.0	3	13.2	6	23.5
Shoshone	10	41.0	6	25.9	8	35.6	7	27.0
Teton	2	11.1	2	10.9	1	5.5	3	14.7
Twin Falls	33	21.2	43	27.8	42	27.3	35	21.5
Valley	1	5.9	5	35.5	5	30.5	6	31.6
Washington	4	16.5	1	4.1	2	8.4	6	25.3

Pregnancies include live births, induced abortions, and reportable stillbirths.

Rate: number of pregnancies to females aged 15-17 per 1,000 females aged 15-17.

## IDAHO RESIDENT TEEN PREGNANCY

Teens Aged 15 to 17

Number and Rate by District and County of Residence, 2007-2008

RESIDENCE	2007		2008	
	Number	Rate	Number	Rate
IDAHO	788	23.9	781	23.8
District 1	82	18.2	90	20.4
District 2	29	14.9	38	20.4
District 3	203	36.7	206	36.7
District 4	154	17.7	148	17.0
District 5	132	33.0	140	35.2
District 6	88	22.2	76	19.6
District 7	100	23.2	83	19.1
Ada	134	17.3	130	16.8
Adams	4	54.1	1	15.2
Bannock	39	23.4	30	18.3
Bear Lake	1	6.1	3	20.3
Benewah	2	10.8	3	16.7
Bingham	33	27.5	24	20.4
Blaine	11	26.8	12	31.0
Boise	-	-	3	18.6
Bonner	16	18.5	18	21.9
Bonneville	64	28.9	60	26.8
Boundary	2	7.9	4	16.3
Butte	3	51.7	2	29.9
Camas	-	-	-	-
Canyon	157	39.0	169	40.8
Caribou	-	-	1	6.1
Cassia	16	28.3	20	35.2
Clark	-	-	-	-
Clearwater	8	47.9	4	27.2
Custer	-	-	1	11.6
Elmore	17	28.7	14	23.1
Franklin	3	8.1	5	13.9
Fremont	9	28.4	5	15.4
Gem	7	18.6	11	31.3
Gooding	9	27.1	10	30.2
Idaho	7	19.4	7	22.1
Jefferson	12	19.0	11	17.5
Jerome	22	44.1	24	48.6
Kootenai	56	19.0	59	20.3
Latah	4	6.9	12	20.8
Lemhi	4	22.0	2	12.5
Lewis	-	-	1	11.4
Lincoln	2	19.4	6	52.6
Madison	7	10.7	2	2.9
Minidoka	19	41.3	23	48.2
Nez Perce	10	13.2	14	19.0
Oneida	-	-	-	-
Owyhee	8	29.6	9	33.7
Payette	24	42.9	15	27.1
Power	9	40.5	11	49.8
Shoshone	6	24.3	6	23.7
Teton	4	20.1	2	10.0
Twin Falls	53	32.9	45	28.4
Valley	3	15.4	1	6.1
Washington	3	12.8	1	4.4

Pregnancies include live births, induced abortions, and reportable stillbirths.

Rate: number of pregnancies to females aged 15-17 per 1,000 females aged 15-17.

IDAHO RESIDENT TEEN PREGNANCY

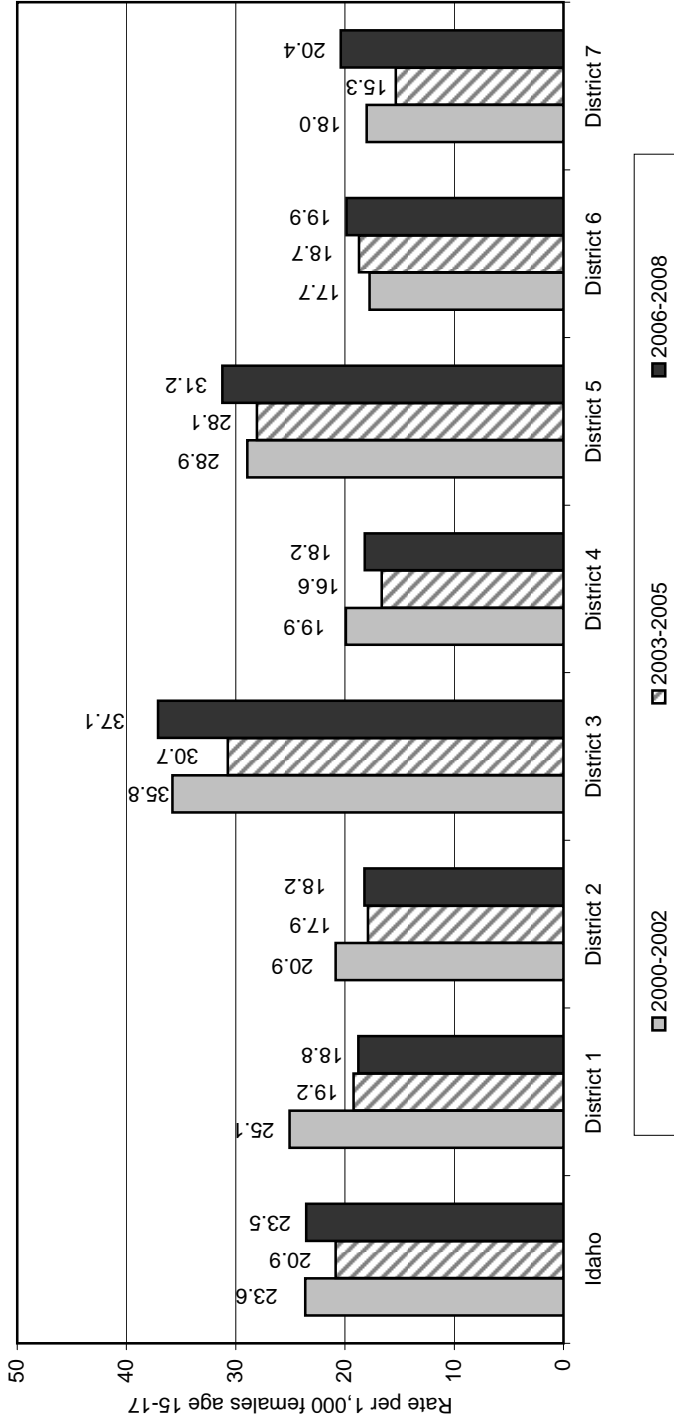
Teens Aged 15-17

Three-Year Number and Average Annual Rate by District and County of Residence  
2000-2002, 2003-2005, and 2006-2008

RESIDENCE	Three Years, 2000-2002		Three Years, 2003-2005		Three Years, 2006-2008	
	Total Number	Average Annual Rate	Total Number	Average Annual Rate	Total Number	Average Annual Rate
IDAHO	2,251	23.6	1,967	20.9	2,331	23.5
District 1	317	25.1	251	19.2	255	18.8
District 2	130	20.9	102	17.9	105	18.2
District 3	509	35.8	466	30.7	620	37.1
District 4	463	19.9	389	16.6	471	18.2
District 5	361	28.9	336	28.1	376	31.2
District 6	233	17.7	223	18.7	238	19.9
District 7	238	18.0	200	15.3	266	20.4
Ada	383	18.9	341	16.5	396	17.2
Adams	1	4.1	2	7.9	7	31.3
Bannock	92	17.5	93	19.6	107	21.5
Bear Lake	4	5.8	6	10.4	4	8.1
Benewah	20	31.8	19	30.6	15	26.5
Bingham	94	23.1	78	20.9	83	22.8
Blaine	21	18.4	27	20.1	34	27.2
Boise	6	11.6	6	11.0	4	8.2
Bonner	58	21.3	43	14.9	45	16.9
Bonneville	139	19.9	138	19.9	173	25.7
Boundary	13	16.0	9	11.4	8	10.3
Butte	1	5.0	4	22.5	5	26.6
Camas	-	-	1	14.9	1	15.4
Canyon	394	40.5	374	34.9	502	41.3
Caribou	10	14.2	6	10.2	1	1.8
Cassia	44	23.4	42	24.6	45	26.1
Clark	2	22.7	1	13.5	4	46.0
Clearwater	9	14.1	14	27.8	14	28.6
Custer	4	11.8	2	7.1	1	3.6
Elmore	60	32.8	31	17.8	61	34.6
Franklin	14	13.2	13	12.0	12	10.6
Fremont	24	21.1	13	13.8	22	22.9
Gem	21	18.7	20	17.8	25	22.3
Gooding	48	44.3	29	30.0	26	26.7
Idaho	21	17.8	14	12.5	20	18.6
Jefferson	31	16.4	25	13.1	31	16.3
Jerome	47	31.1	53	38.7	63	43.1
Kootenai	209	27.3	156	19.3	168	19.0
Latah	22	11.7	14	8.5	25	14.5
Lemhi	7	12.1	4	6.8	7	12.8
Lewis	7	24.9	7	29.7	2	8.1
Lincoln	12	37.6	7	18.1	11	32.8
Madison	21	12.0	12	6.8	19	9.8
Minidoka	63	37.1	59	39.5	63	44.7
Nez Perce	71	31.5	53	24.1	44	19.8
Oneida	3	7.2	7	20.2	-	-
Owyhee	38	45.2	30	37.8	24	29.3
Payette	41	26.2	33	21.3	52	30.9
Power	15	20.5	16	24.0	26	37.2
Shoshone	17	20.4	24	34.2	19	25.0
Teton	10	21.8	5	9.1	9	14.9
Twin Falls	126	26.4	118	25.4	133	27.6
Valley	14	23.0	11	23.2	10	18.2
Washington	14	19.2	7	9.7	10	14.3

Rate: number of pregnancies to females aged 15-17 per 1,000 females aged 15-17.

**IDAHO RESIDENT TEEN PREGNANCY**  
**Three-Year Average Annual Pregnancy Rates for Females Aged 15-17 by District of Residence**  
**2000-2002, 2003-2005, 2006-2008**



Pregnancies include live births, induced abortions, and reportable stillbirths (only those fetal deaths with a gestational period of 20+ weeks or which weigh 350+ grams are required to be reported under Idaho law).  
 Rate: Number of pregnancies per 1,000 females in corresponding age group.

IDAHO RESIDENT TEEN PREGNANCY  
Teens Aged 18 to 19  
Number and Rate by District and County of Residence, 1999-2002

RESIDENCE	1999		2000		2001		2002	
	Number	Rate	Number	Rate	Number	Rate	Number	Rate
IDAHO	1,879	80.8	1,896	83.1	1,850	83.8	1,697	78.3
District 1	250	100.2	269	119.3	253	105.7	222	90.3
District 2	132	67.5	109	51.8	124	61.5	107	52.5
District 3	327	103.4	348	127.2	327	106.2	344	104.7
District 4	448	82.6	417	87.0	425	87.3	402	81.2
District 5	294	127.6	289	121.1	294	113.2	259	96.6
District 6	210	80.5	245	86.8	210	71.9	188	65.2
District 7	218	41.2	219	38.2	217	51.6	175	51.8
Ada	396	80.5	355	82.9	340	78.9	335	77.6
Adams	9	236.8	1	32.3	4	88.9	1	21.3
Bannock	110	73.4	116	70.6	94	67.4	93	73.3
Bear Lake	5	64.9	9	123.3	6	54.5	3	22.4
Benewah	20	165.3	11	99.1	13	100.8	19	139.7
Bingham	61	99.3	86	127.2	72	87.1	50	60.2
Blaine	8	43.7	15	92.6	19	93.6	17	72.3
Boise	13	216.7	4	85.1	9	112.5	7	59.3
Bonner	44	112.5	52	122.4	44	90.2	45	83.8
Bonneville	126	105.9	111	93.6	117	83.9	103	71.9
Boundary	10	69.0	23	213.0	14	97.2	23	146.5
Butte	2	64.5	4	137.9	2	40.8	4	95.2
Camas	-	-	-	-	2	125.0	-	-
Canyon	240	105.6	250	126.1	241	108.7	271	113.9
Caribou	6	63.8	6	63.2	8	59.7	10	74.6
Cassia	38	119.1	38	134.3	42	111.4	40	98.0
Clark	1	125.0	-	-	2	250.0	-	-
Clearwater	8	100.0	8	106.7	10	96.2	6	49.2
Custer	2	41.7	4	133.3	1	23.3	-	-
Elmore	37	105.1	54	131.4	63	161.5	50	127.2
Franklin	17	125.9	14	89.2	11	50.5	16	65.6
Fremont	16	82.5	21	126.5	15	66.7	15	64.9
Gem	22	92.1	18	90.0	17	77.6	17	76.2
Gooding	31	195.0	32	177.8	25	111.6	24	98.8
Idaho	15	98.7	15	102.7	15	69.8	12	48.2
Jefferson	32	112.3	30	107.1	22	59.5	20	50.3
Jerome	45	194.0	42	186.7	35	132.6	35	113.6
Kootenai	151	89.8	160	108.8	166	112.8	123	83.6
Latah	44	41.4	32	26.0	34	30.4	37	33.3
Lemhi	6	67.4	11	129.4	13	127.5	8	67.2
Lewis	6	133.3	4	142.9	6	150.0	5	84.7
Lincoln	11	239.1	7	118.6	10	153.8	5	83.3
Madison	28	8.2	33	8.5	39	19.6	21	19.9
Minidoka	47	153.6	51	154.1	47	128.1	47	126.3
Nez Perce	59	95.9	50	80.1	59	109.5	47	94.8
Oneida	2	48.8	4	74.1	7	97.2	3	36.1
Owyhee	16	93.6	23	176.9	19	119.5	11	63.6
Payette	21	64.6	36	136.4	30	103.8	23	74.4
Power	7	58.3	6	61.9	10	84.7	9	60.8
Shoshone	25	160.3	23	163.1	16	100.0	12	76.4
Teton	7	87.5	9	132.4	8	105.3	8	101.3
Twin Falls	114	108.2	104	91.6	114	105.4	91	87.4
Valley	2	21.5	4	75.5	13	142.9	10	80.6
Washington	19	162.4	20	156.3	16	107.4	21	135.5

Pregnancies include live births, induced abortions, and stillbirths.

Pregnancy rate: Number of pregnancies to females aged 18-19 per 1,000 females age 18-19.



IDAHO RESIDENT TEEN PREGNANCY  
Teens Aged 18 to 19  
Number and Rate by District and County of Residence, 2003-2006

RESIDENCE	2003		2004		2005		2006	
	Number	Rate	Number	Rate	Number	Rate	Number	Rate
IDAHO	1,768	81.6	1,741	80.2	1,728	79.7	1,781	83.3
District 1	206	79.7	207	76.8	215	89.7	210	93.3
District 2	101	50.1	94	45.9	74	36.6	95	45.5
District 3	385	116.1	368	110.7	387	131.2	407	152.0
District 4	428	85.2	382	74.6	408	90.7	425	98.2
District 5	255	98.6	283	111.0	260	108.2	264	117.4
District 6	194	68.8	186	68.8	202	79.7	184	76.4
District 7	199	60.0	221	67.6	182	37.4	196	36.4
Ada	353	80.7	323	72.0	347	86.9	364	94.6
Adams	1	21.3	-	-	4	97.6	6	162.2
Bannock	95	78.3	98	87.5	92	70.9	91	66.7
Bear Lake	2	13.1	5	38.2	5	62.5	6	77.9
Benewah	12	102.6	15	128.2	10	98.0	12	129.0
Bingham	59	71.5	54	64.2	70	101.4	55	94.3
Blaine	13	55.8	21	84.0	16	69.3	26	116.6
Boise	7	63.6	4	39.6	1	13.2	5	58.1
Bonner	19	34.8	34	59.5	43	94.9	39	98.0
Bonneville	129	91.2	131	91.4	105	92.5	117	117.4
Boundary	10	60.6	12	73.2	7	60.3	10	94.3
Butte	3	90.9	2	47.6	2	83.3	3	150.0
Camas	1	76.9	1	55.6	-	-	1	125.0
Canyon	291	122.1	293	121.0	300	135.7	320	160.4
Caribou	8	56.7	11	79.1	8	87.0	2	29.9
Cassia	34	91.4	36	96.5	27	92.2	31	126.0
Clark	2	90.9	-	-	2	153.8	-	-
Clearwater	8	62.5	3	23.8	9	109.8	8	114.3
Custer	2	32.3	2	24.7	5	111.1	4	125.0
Elmore	57	137.7	45	109.5	50	146.2	46	145.6
Franklin	11	51.6	4	20.0	14	87.0	9	63.8
Fremont	19	87.2	16	69.9	15	87.7	12	96.0
Gem	18	76.6	17	75.9	27	142.1	23	135.3
Gooding	15	68.5	23	111.7	23	138.6	21	147.9
Idaho	12	51.9	17	74.2	4	23.5	14	92.7
Jefferson	22	59.1	23	58.8	18	54.7	25	86.2
Jerome	30	94.6	42	135.5	33	123.1	42	168.7
Kootenai	150	93.3	131	78.0	139	87.3	137	88.8
Latah	32	29.6	11	9.9	14	11.6	20	15.1
Lemhi	4	33.3	7	64.2	8	90.9	3	39.5
Lewis	3	48.4	6	113.2	3	85.7	3	83.3
Lincoln	10	158.7	14	205.9	9	126.8	6	85.7
Madison	15	14.7	38	42.2	24	8.0	30	8.0
Minidoka	42	120.7	35	115.5	28	108.1	27	110.7
Nez Perce	46	90.0	57	107.8	44	83.2	50	98.2
Oneida	4	43.0	2	23.8	6	115.4	3	62.5
Owyhee	22	123.6	13	76.9	20	170.9	16	146.8
Payette	36	112.5	36	111.8	24	84.2	28	105.3
Power	12	81.6	10	67.6	5	36.8	15	138.9
Shoshone	15	99.3	15	90.4	16	120.3	12	108.1
Teton	6	66.7	4	39.6	5	54.3	5	56.8
Twin Falls	110	107.6	111	108.6	124	112.7	110	103.1
Valley	11	87.3	10	82.6	10	112.4	10	128.2
Washington	17	111.1	9	64.7	12	113.2	14	138.6

Pregnancies include live births, induced abortions, and stillbirths.

Pregnancy rate: Number of pregnancies to females aged 18-19 per 1,000 females age 18-19.

## IDAHO RESIDENT TEEN PREGNANCY

Teens Aged 18 to 19

Number and Rate by District and County of Residence, 2007-2008

RESIDENCE	2007		2008	
	Number	Rate	Number	Rate
IDAHO	1,914	88.7	1,891	85.5
District 1	221	98.0	258	111.3
District 2	90	42.9	91	45.3
District 3	417	157.9	417	153.2
District 4	471	105.1	402	84.9
District 5	288	128.6	275	122.8
District 6	204	82.4	209	83.0
District 7	223	41.3	239	42.9
Ada	393	97.1	349	81.4
Adams	2	52.6	1	29.4
Bannock	97	70.7	104	74.6
Bear Lake	5	63.3	3	38.0
Benewah	13	139.8	13	156.6
Bingham	69	114.0	62	99.7
Blaine	14	63.3	16	74.4
Boise	7	85.4	3	45.5
Bonner	44	111.4	43	115.0
Bonneville	144	144.7	150	155.4
Boundary	3	30.0	11	103.8
Butte	3	96.8	-	-
Camas	1	90.9	-	-
Canyon	345	175.4	328	160.3
Caribou	9	113.9	6	82.2
Cassia	44	166.7	30	114.9
Clark	1	83.3	1	71.4
Clearwater	9	123.3	6	85.7
Custer	-	-	2	52.6
Elmore	58	200.0	40	132.9
Franklin	9	60.0	12	72.7
Fremont	16	124.0	12	86.3
Gem	28	175.0	29	185.9
Gooding	26	195.5	28	213.7
Idaho	14	89.2	12	72.7
Jefferson	16	54.2	30	100.3
Jerome	44	184.1	37	150.4
Kootenai	142	91.4	172	105.1
Latah	33	25.6	23	19.1
Lemhi	10	133.3	9	116.9
Lewis	5	161.3	5	166.7
Lincoln	8	112.7	8	127.0
Madison	30	8.0	26	6.6
Minidoka	43	179.2	39	173.3
Nez Perce	29	52.9	45	83.6
Oneida	2	45.5	5	131.6
Owyhee	7	59.3	18	152.5
Payette	25	94.0	33	119.1
Power	10	87.0	17	139.3
Shoshone	19	168.1	19	161.0
Teton	6	65.2	9	94.7
Twin Falls	108	101.9	117	107.7
Valley	13	209.7	10	123.5
Washington	10	108.7	8	87.9

Pregnancies include live births, induced abortions, and stillbirths.

Pregnancy rate: Number of pregnancies to females aged 18-19 per 1,000 females age 18-19.

IDAHO RESIDENT TEEN PREGNANCY

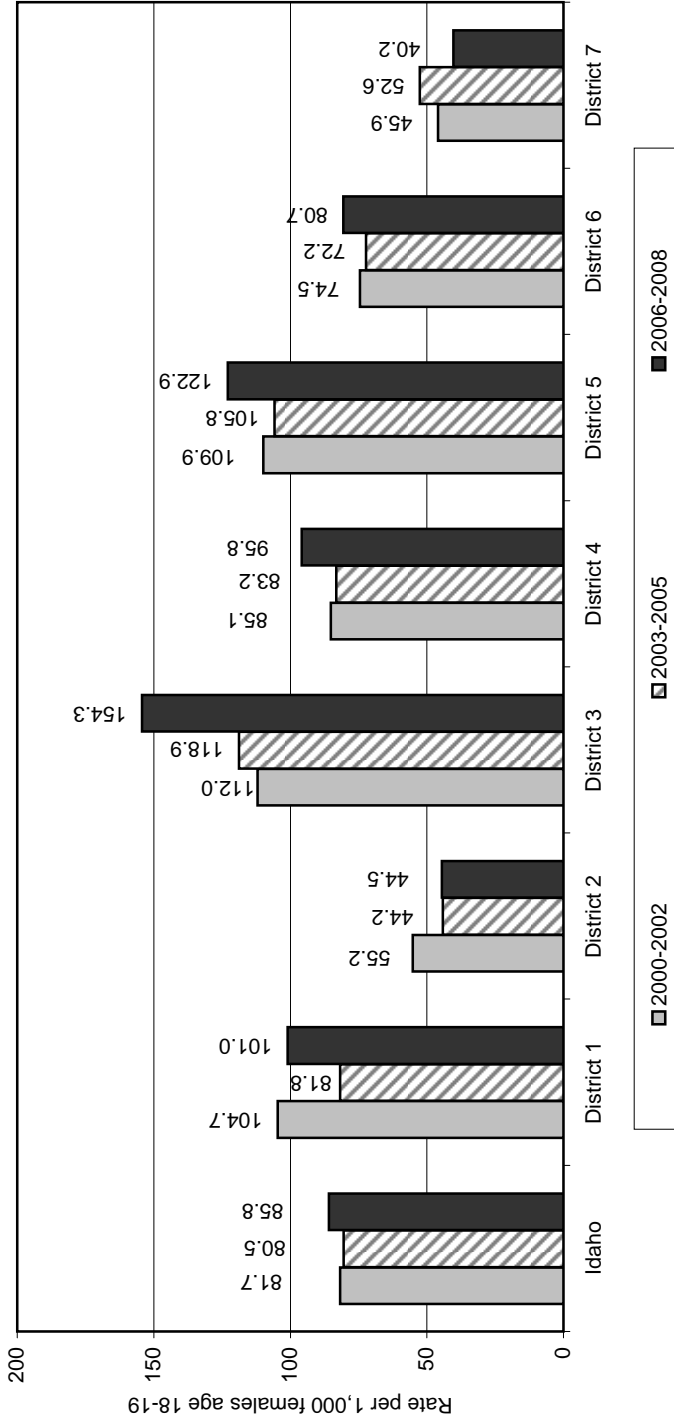
Teens Aged 18-19

Three-Year Number and Average Annual Rate by District and County of Residence  
2000-2002, 2003-2005, and 2006-2008

RESIDENCE	Three Years, 2000-2002		Three Years, 2003-2005		Three Years, 2006-2008	
	Total Number	Average Annual Rate	Total Number	Average Annual Rate	Total Number	Average Annual Rate
IDAHO	5,443	81.7	5,237	80.5	5,586	85.8
District 1	744	104.7	628	81.8	689	101.0
District 2	340	55.2	269	44.2	276	44.5
District 3	1,019	112.0	1,140	118.9	1,241	154.3
District 4	1,244	85.1	1,218	83.2	1,298	95.8
District 5	842	109.9	798	105.8	827	122.9
District 6	643	74.5	582	72.2	597	80.7
District 7	611	45.9	602	52.6	658	40.2
Ada	1,030	79.8	1,023	79.6	1,106	90.8
Adams	6	48.8	5	36.5	9	82.6
Bannock	303	70.4	285	78.5	292	70.7
Bear Lake	18	56.8	12	33.0	14	59.6
Benewah	43	114.4	37	110.1	38	141.3
Bingham	208	89.2	183	77.7	186	102.8
Blaine	51	85.0	50	70.0	56	85.0
Boise	20	81.6	12	41.8	15	64.1
Bonner	141	97.2	96	61.1	126	108.0
Bonneville	331	82.5	365	91.6	411	139.0
Boundary	60	146.7	29	65.2	24	76.9
Butte	10	83.3	7	70.7	6	78.9
Camas	2	50.0	2	44.4	2	64.5
Canyon	762	115.8	884	126.0	993	165.3
Caribou	24	66.1	27	72.6	17	77.6
Cassia	120	112.4	97	93.4	105	136.2
Clark	2	55.6	4	71.4	2	57.1
Clearwater	24	79.7	20	59.5	23	108.0
Custer	5	41.0	9	47.9	6	56.6
Elmore	167	139.9	152	130.2	144	158.8
Franklin	41	66.2	29	50.5	30	65.8
Fremont	51	82.0	50	80.9	40	101.8
Gem	52	81.0	62	95.5	80	164.6
Gooding	81	125.2	61	103.2	75	184.7
Idaho	42	68.9	33	52.4	40	84.6
Jefferson	72	68.7	63	57.7	71	80.3
Jerome	112	140.5	105	117.3	123	167.6
Kootenai	449	101.7	420	86.1	451	95.3
Latah	103	29.8	57	16.8	76	19.9
Lemhi	32	104.6	19	59.9	22	96.5
Lewis	15	118.1	12	80.0	13	134.0
Lincoln	22	119.6	33	163.4	22	107.8
Madison	93	13.4	77	15.7	86	7.5
Minidoka	145	135.5	105	115.4	109	153.7
Nez Perce	156	94.0	147	93.7	124	77.7
Oneida	14	67.0	12	52.4	10	76.9
Owyhee	53	114.7	55	118.5	41	118.8
Payette	89	103.2	96	103.6	86	106.3
Power	25	68.9	27	62.6	42	121.7
Shoshone	51	111.4	46	102.2	50	146.2
Teton	25	112.1	15	53.0	20	72.7
Twin Falls	309	94.8	345	109.7	335	104.3
Valley	27	100.7	31	92.3	33	149.3
Washington	57	131.9	38	95.5	32	112.7

Rate: number of pregnancies to females aged 18-19 per 1,000 females aged 18-19.

**IDAHO RESIDENT TEEN PREGNANCY**  
**Three-Year Average Annual Pregnancy Rates for Females Aged 18-19 by District of Residence**  
**2000-2002, 2003-2005, 2006-2008**



Pregnancies include live births, induced abortions, and reportable stillbirths (only those fetal deaths with a gestational period of 20+ weeks or which weigh 350+ grams are required to be reported under Idaho law).  
 Rate: Number of pregnancies per 1,000 females in corresponding age group.

**IDAHO RESIDENT TEEN PREGNANCY**  
**Teens Aged 15-19, Race by Ethnicity and District of Residence**  
**Total Number and Average Annual Pregnancy Rate, 2006-2008**

DISTRICT OF RESIDENCE	TOTAL		NON-HISPANIC BY RACE <sup>2</sup>										HISPANIC	
	Number	Rate <sup>1</sup>	White, Non-Hispanic		Black, Non-Hispanic		Indian/Alaskan Native, Non-Hispanic		Asian/Pacific Islander, Non-Hispanic		Hispanic		Number	Rate <sup>1</sup>
			Number	Rate <sup>1</sup>	Number	Rate <sup>1</sup>	Number	Rate <sup>1</sup>	Number	Rate <sup>1</sup>	Number	Rate <sup>1</sup>		
TOTAL	7,917	48.2	5,467	39.3	73	46.0	203	75.9	61	35.3	2,113	111.3		
District 1	944	46.3	854	45.5	7	44.9	31	65.3	3	27.0	49	55.2		
District 2	381	31.8	321	30.1	2	13.5	33	61.7	5	36.2	20	40.7		
District 3	1,861	75.2	1,013	55.6	11	49.5	21	102.4	8	27.4	808	138.8		
District 4	1,769	44.9	1,383	40.5	34	44.6	16	36.4	28	35.8	308	93.5		
District 5	1,203	64.1	704	48.2	4	54.1	16	121.2	5	43.5	474	123.1		
District 6	835	43.1	549	33.8	7	72.2	74	102.5	7	51.9	198	90.1		
District 7	924	31.4	643	24.3	8	63.0	12	72.3	5	32.1	256	104.5		

The Idaho birth and stillbirth certificates were revised in 2004 and the collection of race and ethnicity changed. It became possible to choose one or more races and one or more Hispanic origins of the mother and father. Because of changes in the collection methodology for race, data in 2004 and after are not comparable with data prior to 2004. Race and ethnicity are reported separately on the birth and stillbirth certificate and the abortion record.

1. Pregnancy rate: number of pregnancies per 1,000 females in specific age, race, and ethnic category. Pregnancies include live births, induced abortions, and reportable stillbirths (only those fetal deaths with a gestational period of 20+ weeks or which weigh 350+ grams are required to be reported under Idaho law). Rates are based on population estimates for July 1, 2006-2008 U.S. resident population from the Vintage 2006, 2007, and 2008 postcensal series, prepared under a collaborative arrangement between the National Center for Health Statistics and U.S. Census Bureau, Internet release date August 16, 2007, September 5, 2008, and September 2, 2009, respectively.
2. In 2006-2008 race of mother was not reported for 1.1 percent of births for the age group 15-19. In these cases, if the race of the father was known, the race of the father was assigned to the mother. When information was not available for either parent, the race of the mother was imputed according to the race of the mother specified on the preceding record with a known race of mother. In 2004, Idaho began using new birth and stillbirth certificates and the methodology for collecting race and categorizing race was changed. Prior to 2004, if mother's race was written on the certificate as Hispanic or Mexican, the race was categorized as white. Beginning in 2004, the methodology for categorizing race was modified; if mother's race was reported as Hispanic or Mexican the race was categorized as other race. From 2006 to 2008, 11.7 percent of Idaho mothers aged 15-19 were categorized as other race. However, population estimates are not readily available for other race in order to calculate rates for other race. Therefore, for these statistics, if race was reported as other race and ethnicity was reported as Hispanic, then race was allocated to white; if race of mother was reported as other race and ethnicity was reported as non-Hispanic, then race of mother was imputed according to the race of the mother specified on the preceding record with a known, non-other race. For births in Idaho, if more than one race was reported, the races were bridged to one race. For stillbirths with more than one race, other or unknown race, race of mother was allocated to white. Abortion records with other or unknown race were allocated to white race. Pregnancies with ethnicity not stated (1.5 percent of records) are included with non-Hispanic pregnancies, rather than being distributed. Thus, rates for Hispanics are underestimated to the extent that the pregnancies with ethnicity not stated were actually to Hispanic teens. Rates based on less than 20 pregnancies are shown in this table, but are not considered statistically reliable rates.

**IDAHO RESIDENT TEEN LIVE BIRTHS**  
**Number of Births by Father's Age and Mother's Age**  
**Three-Year Number and Percent of Births with Father's Age Unknown**  
**2006-2008**

Father's Age	Mother's Age			
	<15	15-19	15-17	18-19
<15	2	5	5	-
15-17	11	383	260	123
18-19	2	1,373	498	875
20+	2	3,325	490	2,835
Unknown	36	1,584	623	961
<b>Total</b>	<b>53</b>	<b>6,670</b>	<b>1,876</b>	<b>4,794</b>

Percentage with father's age not stated:                      67.9%                      23.7%                      33.2%                      20.0%

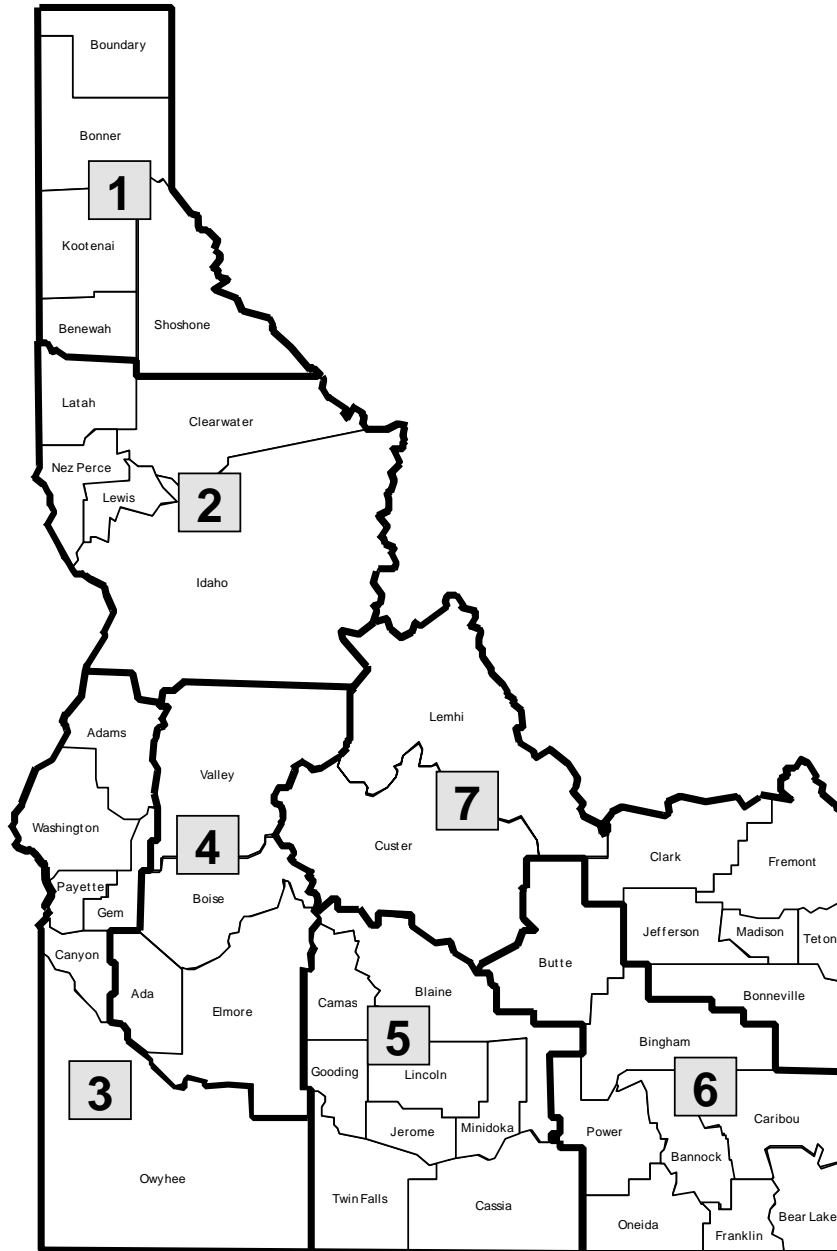
**IDAHO RESIDENT TEEN LIVE BIRTHS**  
**Number of Births by Marital Status and Mother's Age**  
**Three-Year Total Number and Percent Mother Not Married**  
**2006-2008**

Marital Status	Mother's Age			
	<15	15-19	15-17	18-19
No	52	4,707	1,546	3,161
Yes	1	1,963	330	1,633
<b>Total</b>	<b>53</b>	<b>6,670</b>	<b>1,876</b>	<b>4,794</b>

Percentage of mothers not married:                      98.1%                      70.6%                      82.4%                      65.9%

Note: Marital status of mother is recorded as married if she was married at the time of the delivery, conception, or any time between. If mother was not married and a paternity acknowledgment was signed by the father, the information such as father's name and date of birth is recorded on the birth certificate. If mother was not married and a paternity acknowledgment was not signed by the father, the information such as father's name and date of birth is not reported on the birth certificate.

## Counties Comprising Idaho Public Health Districts



District 1	District 2	District 3	District 4	District 5	District 6	District 7
Benewah Bonner Boundary Kootenai Shoshone	Clearwater Idaho Latah Lewis Nez Perce	Adams Canyon Gem Owyhee Payette Washington	Ada Boise Elmore Valley	Blaine Camas Cassia Gooding Jerome Lincoln Minidoka Twin Falls	Bannock Bear Lake Bingham Butte Caribou Franklin Oneida Power	Bonneville Clark Custer Fremont Jefferson Lemhi Madison Teton

IDAHO RESIDENT POPULATION  
Teen Females by Age Group  
1999-2000

RESIDENCE	1999				2000			
	10-14	15-17	18-19	15-19	10-14	15-17	18-19	15-19
IDAHO	47,729	31,557	23,250	54,807	50,911	31,901	22,826	54,727
District 1	6,108	4,076	2,495	6,571	6,839	4,182	2,255	6,437
District 2	2,876	2,058	1,956	4,014	3,311	2,145	2,106	4,251
District 3	7,153	4,923	3,163	8,086	7,722	4,639	2,736	7,375
District 4	11,057	7,407	5,425	12,832	12,510	7,649	4,792	12,441
District 5	6,437	4,183	2,304	6,487	6,663	4,255	2,386	6,641
District 6	7,285	4,577	2,610	7,187	6,828	4,566	2,823	7,389
District 7	6,813	4,333	5,297	9,630	7,038	4,465	5,728	10,193
Ada	9,737	6,582	4,920	11,502	10,951	6,639	4,281	10,920
Adams	146	94	38	132	140	84	31	115
Bannock	3,112	1,918	1,498	3,416	2,756	1,866	1,642	3,508
Bear Lake	350	172	77	249	327	242	73	315
Benewah	356	227	121	348	354	222	111	333
Bingham	2,116	1,349	614	1,963	2,119	1,380	676	2,056
Blaine	536	299	183	482	696	353	162	515
Boise	173	112	60	172	259	184	47	231
Bonner	1,406	890	391	1,281	1,501	882	425	1,307
Bonneville	3,486	2,237	1,190	3,427	3,742	2,350	1,186	3,536
Boundary	382	284	145	429	430	277	108	385
Butte	141	106	31	137	109	73	29	102
Camas	23	29	5	34	43	25	11	36
Canyon	4,896	3,397	2,273	5,670	5,254	3,124	1,983	5,107
Caribou	374	226	94	320	351	240	95	335
Cassia	1,046	668	319	987	993	651	283	934
Clark	44	17	8	25	46	30	12	42
Clearwater	326	229	80	309	307	227	75	302
Custer	154	101	48	149	175	106	30	136
Elmore	893	550	352	902	1,031	613	411	1,024
Franklin	599	400	135	535	593	376	157	533
Fremont	570	363	194	557	523	398	166	564
Gem	501	339	239	578	614	373	200	573
Gooding	566	363	159	522	540	382	180	562
Idaho	539	394	152	546	626	415	146	561
Jefferson	1,078	639	285	924	1,028	637	280	917
Jerome	761	479	232	711	767	514	225	739
Kootenai	3,529	2,314	1,682	3,996	4,125	2,514	1,470	3,984
Latah	833	604	1,064	1,668	987	646	1,233	1,879
Lemhi	267	186	89	275	326	197	85	282
Lewis	135	89	45	134	132	100	28	128
Lincoln	164	120	46	166	195	93	59	152
Madison	986	668	3,403	4,071	927	615	3,901	4,516
Minidoka	975	610	306	916	880	614	331	945
Nez Perce	1,043	742	615	1,357	1,259	757	624	1,381
Oneida	200	109	41	150	186	145	54	199
Owyhee	405	284	171	455	456	287	130	417
Payette	787	530	325	855	857	520	264	784
Power	393	297	120	417	387	244	97	341
Shoshone	435	361	156	517	429	287	141	428
Teton	228	122	80	202	271	132	68	200
Twin Falls	2,366	1,615	1,054	2,669	2,549	1,623	1,135	2,758
Valley	254	163	93	256	269	213	53	266
Washington	418	279	117	396	401	251	128	379

Female population estimates for July 1, 1999 are from the U.S. Census Bureau, Internet release date Aug. 30, 2000.  
Female population census for April, 1, 2000 are from the U.S. Census Bureau, Internet release date Aug. 1, 2001.



IDAHO RESIDENT POPULATION  
Teen Females by Age Group  
2001-2002

RESIDENCE	2001				2002			
	10-14	15-17	18-19	15-19	10-14	15-17	18-19	15-19
IDAHO	51,514	31,718	22,078	53,796	51,523	31,561	21,679	53,240
District 1	6,845	4,224	2,393	6,617	6,803	4,242	2,459	6,701
District 2	3,226	2,071	2,015	4,086	3,192	2,014	2,037	4,051
District 3	8,216	4,711	3,078	7,789	8,382	4,869	3,286	8,155
District 4	12,986	7,790	4,869	12,659	13,169	7,815	4,953	12,768
District 5	6,610	4,140	2,598	6,738	6,561	4,085	2,680	6,765
District 6	6,744	4,394	2,922	7,316	6,611	4,169	2,884	7,053
District 7	6,887	4,388	4,203	8,591	6,805	4,367	3,380	7,747
Ada	11,417	6,812	4,308	11,120	11,641	6,846	4,318	11,164
Adams	133	79	45	124	129	80	47	127
Bannock	2,773	1,737	1,394	3,131	2,731	1,655	1,269	2,924
Bear Lake	317	238	110	348	301	211	134	345
Benewah	333	204	129	333	314	203	136	339
Bingham	2,038	1,373	827	2,200	2,004	1,317	830	2,147
Blaine	733	375	203	578	711	413	235	648
Boise	267	173	80	253	268	161	118	279
Bonner	1,475	914	488	1,402	1,427	928	537	1,465
Bonneville	3,687	2,321	1,394	3,715	3,650	2,310	1,433	3,743
Boundary	430	264	144	408	404	271	157	428
Butte	96	62	49	111	109	65	42	107
Camas	34	25	16	41	38	28	13	41
Canyon	5,670	3,204	2,217	5,421	5,857	3,389	2,379	5,768
Caribou	354	237	134	371	327	229	134	363
Cassia	976	635	377	1,012	980	592	408	1,000
Clark	40	33	8	41	45	25	16	41
Clearwater	287	211	104	315	276	200	122	322
Custer	157	117	43	160	152	115	49	164
Elmore	1,035	598	390	988	1,008	620	393	1,013
Franklin	605	353	218	571	608	329	244	573
Fremont	478	378	225	603	468	363	231	594
Gem	645	374	219	593	620	379	223	602
Gooding	541	357	224	581	539	345	243	588
Idaho	628	387	215	602	607	376	249	625
Jefferson	1,004	630	370	1,000	1,002	623	398	1,021
Jerome	768	507	264	771	782	491	308	799
Kootenai	4,195	2,566	1,472	4,038	4,264	2,571	1,472	4,043
Latah	974	625	1,117	1,742	958	611	1,111	1,722
Lemhi	325	193	102	295	317	190	119	309
Lewis	127	98	40	138	136	83	59	142
Lincoln	193	116	65	181	189	110	60	170
Madison	891	564	1,985	2,549	868	566	1,055	1,621
Minidoka	850	559	367	926	839	525	372	897
Nez Perce	1,210	750	539	1,289	1,215	744	496	1,240
Oneida	188	142	72	214	182	127	83	210
Owyhee	468	287	159	446	471	266	173	439
Payette	882	523	289	812	891	519	309	828
Power	373	252	118	370	349	236	148	384
Shoshone	412	276	160	436	394	269	157	426
Teton	305	152	76	228	303	175	79	254
Twin Falls	2,515	1,566	1,082	2,648	2,483	1,581	1,041	2,622
Valley	267	207	91	298	252	188	124	312
Washington	418	244	149	393	414	236	155	391

Female population estimates were developed by the Bureau of Vital Records and Health Statistics by applying April 1, 2000 Census age and sex proportions to the July 1, 2001 county total population estimates from the U.S. Census Bureau Female population estimates for July 1, 2002 are from the National Center for Health Statistics, Vintage 2002 postcensal series, prepared under a collaborative arrangement with U.S. Census Bureau, Internet release date Aug. 8, 2003.

IDAHO RESIDENT POPULATION  
Teen Females by Age Group  
2003-2004

RESIDENCE	2003				2004			
	10-14	15-17	18-19	15-19	10-14	15-17	18-19	15-19
IDAHO	51,588	31,176	21,666	52,842	50,916	31,340	21,714	53,054
District 1	6,825	4,240	2,586	6,826	6,823	4,324	2,697	7,021
District 2	3,078	1,915	2,014	3,929	2,969	1,911	2,049	3,960
District 3	8,646	4,927	3,316	8,243	8,698	5,081	3,325	8,406
District 4	13,182	7,678	5,025	12,703	13,175	7,733	5,121	12,854
District 5	6,533	4,044	2,587	6,631	6,360	3,998	2,550	6,548
District 6	6,538	3,975	2,819	6,794	6,287	3,934	2,705	6,639
District 7	6,786	4,397	3,319	7,716	6,604	4,359	3,267	7,626
Ada	11,703	6,737	4,375	11,112	11,669	6,820	4,488	11,308
Adams	121	84	47	131	110	83	49	132
Bannock	2,669	1,574	1,214	2,788	2,613	1,579	1,120	2,699
Bear Lake	277	194	153	347	264	191	131	322
Benewah	295	211	117	328	292	212	117	329
Bingham	2,026	1,265	825	2,090	1,918	1,213	841	2,054
Blaine	685	441	233	674	655	465	250	715
Boise	243	178	110	288	235	186	101	287
Bonner	1,377	958	546	1,504	1,304	959	571	1,530
Bonneville	3,601	2,347	1,415	3,762	3,534	2,339	1,434	3,773
Boundary	403	262	165	427	390	261	164	425
Butte	113	56	33	89	100	60	42	102
Camas	37	22	13	35	29	22	18	40
Canyon	6,161	3,459	2,383	5,842	6,259	3,608	2,422	6,030
Caribou	310	202	141	343	275	204	139	343
Cassia	964	579	372	951	940	550	373	923
Clark	39	24	22	46	43	23	21	44
Clearwater	254	173	128	301	241	167	126	293
Custer	144	99	62	161	137	87	81	168
Elmore	990	593	414	1,007	1,010	586	411	997
Franklin	615	342	213	555	621	353	200	553
Fremont	493	333	218	551	476	304	229	533
Gem	603	374	235	609	587	380	224	604
Gooding	532	336	219	555	533	324	206	530
Idaho	558	359	231	590	531	375	229	604
Jefferson	991	644	372	1,016	965	635	391	1,026
Jerome	777	468	317	785	791	451	310	761
Kootenai	4,346	2,565	1,607	4,172	4,443	2,660	1,679	4,339
Latah	928	559	1,082	1,641	887	553	1,112	1,665
Lemhi	292	195	120	315	272	201	109	310
Lewis	134	85	62	147	133	76	53	129
Lincoln	188	134	63	197	175	127	68	195
Madison	925	575	1,020	1,595	896	586	901	1,487
Minidoka	821	506	348	854	762	514	303	817
Nez Perce	1,204	739	511	1,250	1,177	740	529	1,269
Oneida	169	119	93	212	155	117	84	201
Owyhee	469	254	178	432	457	264	169	433
Payette	900	514	320	834	892	505	322	827
Power	359	223	147	370	341	217	148	365
Shoshone	404	244	151	395	394	232	166	398
Teton	301	180	90	270	281	184	101	285
Twin Falls	2,529	1,558	1,022	2,580	2,475	1,545	1,022	2,567
Valley	246	170	126	296	261	141	121	262
Washington	392	242	153	395	393	241	139	380

Female population estimates for July 1, 2003 and July 1, 2004 are from the National Center for Health Statistics, United States resident population from the Vintage 2003 and 2004 postcensal series, prepared under a collaborative arrangement with the U.S. Census Bureau, Internet release date Aug. 18, 2004 and Sept. 9, 2005, respectively.

IDAHO RESIDENT POPULATION  
Teen Females by Age Group  
2005-2006

RESIDENCE	2005				2006			
	10-14	15-17	18-19	15-19	10-14	15-17	18-19	15-19
IDAHO	49,920	31,738	21,668	53,406	52,070	33,264	21,385	54,649
District 1	6,710	4,494	2,397	6,891	6,918	4,667	2,251	6,918
District 2	2,767	1,876	2,020	3,896	2,838	1,957	2,090	4,047
District 3	8,639	5,159	2,950	8,109	9,063	5,567	2,678	8,245
District 4	13,043	7,988	4,500	12,488	13,828	8,496	4,329	12,825
District 5	6,180	3,929	2,402	6,331	6,382	4,063	2,249	6,312
District 6	6,086	4,007	2,533	6,540	6,294	4,137	2,409	6,546
District 7	6,495	4,285	4,866	9,151	6,747	4,377	5,379	9,756
Ada	11,614	7,079	3,993	11,072	12,286	7,574	3,849	11,423
Adams	98	86	41	127	96	84	37	121
Bannock	2,578	1,597	1,298	2,895	2,693	1,666	1,365	3,031
Bear Lake	236	193	80	273	251	178	77	255
Benewah	290	197	102	299	315	200	93	293
Bingham	1,840	1,249	690	1,939	1,895	1,264	583	1,847
Blaine	623	434	231	665	621	451	223	674
Boise	238	182	76	258	260	169	86	255
Bonner	1,219	961	453	1,414	1,245	967	398	1,365
Bonneville	3,496	2,250	1,135	3,385	3,684	2,287	997	3,284
Boundary	372	268	116	384	397	277	106	383
Butte	116	62	24	86	125	63	20	83
Camas	26	23	14	37	28	24	8	32
Canyon	6,283	3,655	2,211	5,866	6,700	3,999	1,995	5,994
Caribou	262	185	92	277	256	209	67	276
Cassia	907	575	293	868	926	589	246	835
Clark	40	27	13	40	41	28	9	37
Clearwater	223	164	82	246	224	176	70	246
Custer	130	95	45	140	144	100	32	132
Elmore	951	563	342	905	1,042	563	316	879
Franklin	589	384	161	545	603	399	141	540
Fremont	465	304	171	475	498	319	125	444
Gem	555	372	190	562	529	394	170	564
Gooding	517	308	166	474	537	312	142	454
Idaho	492	382	170	552	478	400	151	551
Jefferson	954	635	329	964	974	642	290	932
Jerome	782	452	268	720	814	469	249	718
Kootenai	4,430	2,843	1,593	4,436	4,534	2,964	1,543	4,507
Latah	793	534	1,204	1,738	847	573	1,324	1,897
Lemhi	249	196	88	284	237	207	76	283
Lewis	128	75	35	110	120	76	36	112
Lincoln	181	125	71	196	174	118	70	188
Madison	871	595	2,993	3,588	880	590	3,762	4,352
Minidoka	739	472	259	731	755	471	244	715
Nez Perce	1,131	721	529	1,250	1,169	732	509	1,241
Oneida	144	110	52	162	141	103	48	151
Owyhee	444	276	117	393	464	283	109	392
Payette	883	532	285	817	907	570	266	836
Power	321	227	136	363	330	255	108	363
Shoshone	399	225	133	358	427	259	111	370
Teton	290	183	92	275	289	204	88	292
Twin Falls	2,405	1,540	1,100	2,640	2,527	1,629	1,067	2,696
Valley	240	164	89	253	240	190	78	268
Washington	376	238	106	344	367	237	101	338

Female population estimates for July 1, 2005 and July 1, 2006 are from the National Center for Health Statistics, United States resident population from the Vintage 2005 and 2006 postcensal series, prepared under a collaborative arrangement with the U.S. Census Bureau, Internet release date Aug. 16, 2006 and Aug. 16, 2007, respectively.

IDAHO RESIDENT POPULATION  
Teen Females by Age Group  
2007-2008

RESIDENCE	2007				2008			
	10-14	15-17	18-19	15-19	10-14	15-17	18-19	15-19
IDAHO	52,967	32,974	21,587	54,561	53,029	32,772	22,113	54,885
District 1	6,888	4,504	2,254	6,758	6,836	4,404	2,318	6,722
District 2	2,767	1,943	2,099	4,042	2,746	1,866	2,008	3,874
District 3	9,442	5,538	2,641	8,179	9,461	5,606	2,722	8,328
District 4	14,594	8,702	4,483	13,185	14,721	8,691	4,735	13,426
District 5	6,186	4,006	2,239	6,245	6,202	3,974	2,239	6,213
District 6	6,188	3,962	2,475	6,437	6,142	3,883	2,518	6,401
District 7	6,902	4,319	5,396	9,715	6,921	4,348	5,573	9,921
Ada	12,978	7,755	4,049	11,804	13,111	7,760	4,287	12,047
Adams	87	74	38	112	83	66	34	100
Bannock	2,707	1,666	1,372	3,038	2,767	1,642	1,394	3,036
Bear Lake	245	165	79	244	236	148	79	227
Benewah	297	185	93	278	294	180	83	263
Bingham	1,831	1,198	605	1,803	1,769	1,175	622	1,797
Blaine	588	411	221	632	614	387	215	602
Boise	259	159	82	241	264	161	66	227
Bonner	1,250	865	395	1,260	1,246	823	374	1,197
Bonneville	3,694	2,214	995	3,209	3,730	2,235	965	3,200
Boundary	392	254	100	354	375	245	106	351
Butte	114	58	31	89	107	67	25	92
Camas	20	24	11	35	23	17	12	29
Canyon	7,106	4,023	1,967	5,990	7,193	4,139	2,046	6,185
Caribou	253	179	79	258	257	164	73	237
Cassia	882	565	264	829	920	568	261	829
Clark	33	31	12	43	29	28	14	42
Clearwater	205	167	73	240	201	147	70	217
Custer	141	91	36	127	130	86	38	124
Elmore	1,121	593	290	883	1,109	607	301	908
Franklin	605	372	150	522	605	359	165	524
Fremont	497	317	129	446	480	325	139	464
Gem	543	376	160	536	542	352	156	508
Gooding	530	332	133	465	528	331	131	462
Idaho	451	360	157	517	459	317	165	482
Jefferson	955	630	295	925	943	629	299	928
Jerome	774	499	239	738	774	494	246	740
Kootenai	4,569	2,953	1,553	4,506	4,541	2,903	1,637	4,540
Latah	859	579	1,290	1,869	853	576	1,205	1,781
Lemhi	208	182	75	257	216	160	77	237
Lewis	112	82	31	113	95	88	30	118
Lincoln	170	103	71	174	160	114	63	177
Madison	1,063	655	3,762	4,417	1,059	684	3,946	4,630
Minidoka	681	460	240	700	659	477	225	702
Nez Perce	1,140	755	548	1,303	1,138	738	538	1,276
Oneida	130	102	44	146	122	107	38	145
Owyhee	432	270	118	388	415	267	118	385
Payette	921	560	266	826	890	554	277	831
Power	303	222	115	337	279	221	122	343
Shoshone	380	247	113	360	380	253	118	371
Teton	311	199	92	291	334	201	95	296
Twin Falls	2,541	1,612	1,060	2,672	2,524	1,586	1,086	2,672
Valley	236	195	62	257	237	163	81	244
Washington	353	235	92	327	338	228	91	319

Female population estimates for July 1, 2007 and July 1, 2008 are from the National Center for Health Statistics, United States resident population from the Vintage 2007 and 2008 postcensal series, prepared under a collaborative arrangement with the U.S. Census Bureau, Internet release date Sept. 5, 2008 and Sept. 2, 2009, respectively.