

# Working Together for Early Intervention in Idaho

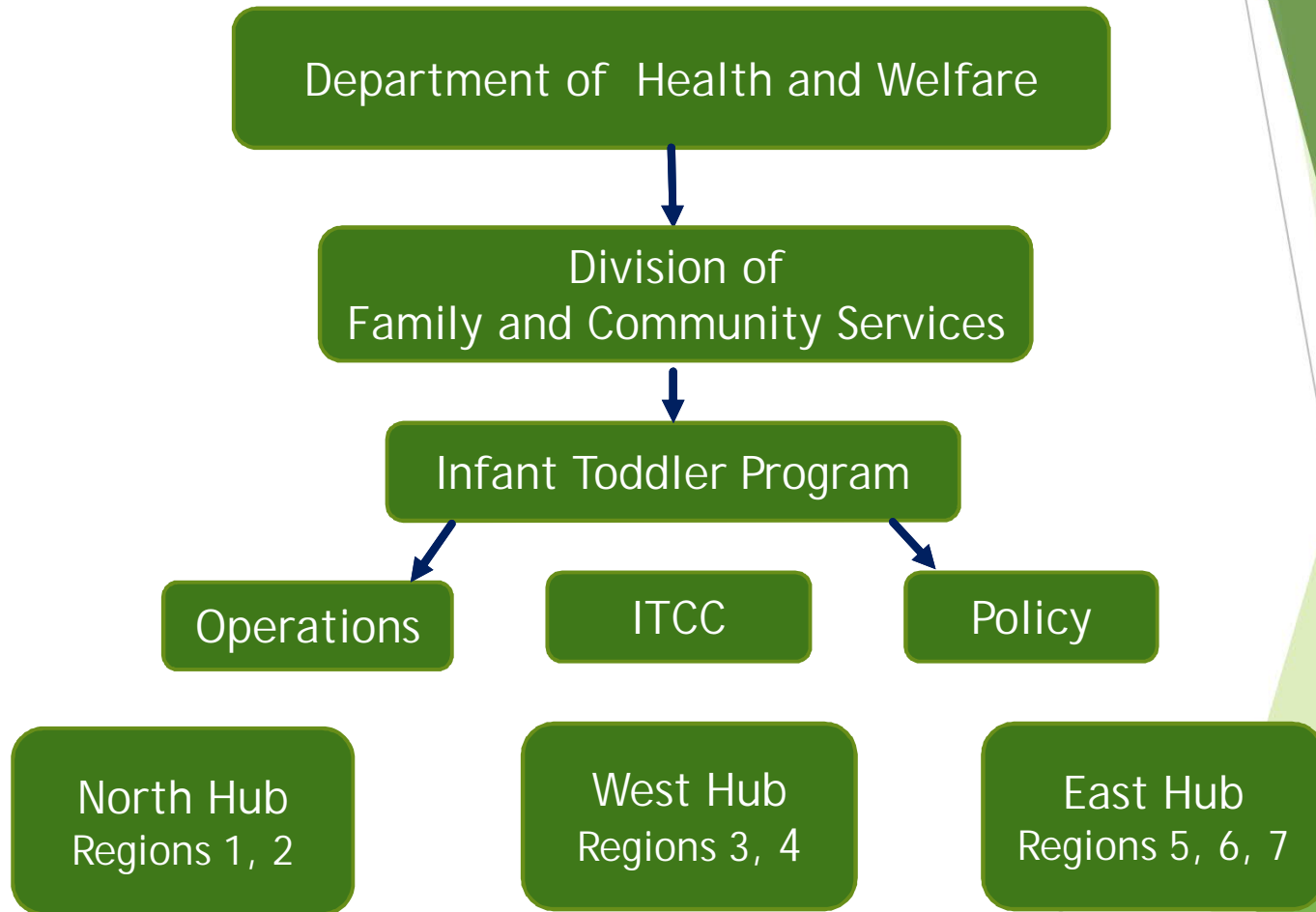


# Overview Topics

- Infant Toddler Program services and the early intervention system in Idaho
- The Infant Toddler Coordinating Council (ITCC), Idaho's governor-appointed advisory Council
- The Regional Early Childhood Committees (RECCs) and how they support the work of the Council



# Organizational Structure



# Individuals with Disabilities Education Act (IDEA)



## Part C of IDEA: Early Intervention

Children birth - 3 with disabilities, and their families receive early intervention services

## Part B of IDEA: Services for School-Age Children

Children ages 3 - 22 receive special education and related services

# Purpose of Early Intervention

- Enhance the development of infants and toddlers with delays or disabilities
- Enhance the capacity of these children's families to meet the special needs of their kids



# IDEA-required Components of Early Intervention System

- Statewide Public Awareness
- Child Identification
- Central Directory of Resources
- Data Collection
- Personnel Development / Standards
- Evaluation and Monitoring
- Equitable Distribution of Resources
- Child and Family Entitlements
- **State Level Advisory Council**

# Idaho's EI System

## ➤ Referrals

Physicians, home visiting programs, Early Head Start, Developmental Milestones

## ➤ Program Eligibility

- Child has a significant developmental delay (6 months behind others the same age)
- Physical or medical condition that may result in developmental delay (i.e. prematurity, Down Syndrome, Cerebral Palsy, severe hearing or vision problems)

# Available Services

- Assistive Technology Devices and Services
- Audiology and Speech Language Services
- Family Training, Counseling and Home Visits
- Nursing and Nutritional Services
- Physical and Occupational Therapy
- Psychological Services
- Service Coordination
- Sign Language and Cued Language Services
- Social Work Services
- Special Instruction
- Vision Services
- Transportation and Related Costs



# Transitions as Children Approach Age 3

- When children are around 24 months we talk with families during an IFSP meeting about next settings for their child
- Children transition from Infant Toddler Program to Part B (public schools) or community programs
- Staff work with family to develop IFSP transition outcomes during their transition meeting
- ITP is responsible for notifying the Local Educational Agency and State Educational Agency

# Questions about ITP Services?



# Infant Toddler Coordinating Council

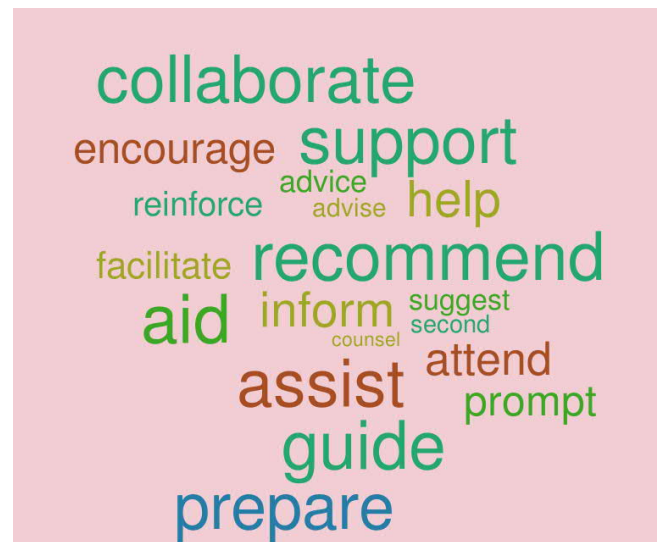
- ▶ Required by Part C regulations
- ▶ Meets quarterly in Boise:  
September, November, February, May
- ▶ Responsible for advising and assisting in the performance of responsibilities under Part C
- ▶ Membership is specified in Part C regulations
- ▶ In Idaho, provides guidance and direction for the Regional Early Childhood Committees (RECC)



## Members Include Parents and Representatives from a Variety of Agencies and Organizations

- Parents of children with disabilities
- Part B Representative: services to ages 3- 5
- State Child Care Administrator
- Children's Mental Health representative
- Head Start and Early Head Start representative
- Foster Care representative
- Homeless Program representative
- Medicaid representative
- Early Intervention and Direct Service providers

# State Interagency Coordinating Councils



# What Does the Council Do?

- Advise and assist the Infant Toddler Program regarding the provision of appropriate services for children 0-3 with disabilities
- Meet, at a **minimum, on a quarterly basis**, and in such locations as it determines necessary
- The meetings must
  1. Be **publicly announced** sufficiently in advance of meeting date to ensure that all interested parties have an opportunity to attend;
  2. To the extent appropriate, be **open and accessible** to the general public; and
  3. As needed, **provide interpreters** for persons who are deaf and other necessary services for Council members and participants. The Council may use Part C funds to pay for those services.

(Authority: 20 U.S.C. 1441(c))

# How Might You Participate?

- Ask questions
- Take advantage of networking opportunities
- Think about how your agency or organization can collaborate
- Get to know the other committee members
- Learn about the collaborating organizations and agencies
- Bring your experience
- Participate in group activities
- Read the Charter and Bylaws
- Share information with those in your circle

# Regional Early Childhood Committees

## MISSION

To advise and assist the Infant Toddler Program in the implementation of the early intervention system in the state, to provide information, and to coordinate and collaborate with community partners to support at-risk young children and children with delays or disabilities and their families.





# How do RECCs Work with ITCC?

- RECC State Chair provides a link to both groups; State Chair is elected from among Regional RECC Chairs and reports on local committee activity at each quarterly ITCC meeting
- RECC State Chair serves on ITCC's Executive Committee
- ITCC Leadership attends annual summer meeting of RECC Chairs
- ITCC is working hard to provide clear and consistent guidance to RECCs



- Provide local integration
- Advise the Council in the local implementation of state and federal regulations through the system of early intervention
- Advance the work of the ITCC in the local community

## What Do RECCs Do?

- ▶ Provide outreach at local events
- ▶ Provide developmental screening training for local child care providers
- ▶ Partner with other agencies to host community developmental screening clinics
- ▶ Provide training at local early childhood conferences
- ▶ Collaborate with other agencies at Week of the Young Child events
- ▶ Create community resource materials such as brochures and posters

# Who Participates?

Parents of young children with delays or disabilities/medical conditions that could result in a delay or disability

Staff from:

- ▶ Idaho STARS
- ▶ Public libraries
- ▶ Head Start and Early Head Start programs
- ▶ Public school early childhood personnel
- ▶ Home Visiting program staff
- ▶ Child Care or early childhood program staff
- ▶ Idaho Parents Unlimited
- ▶ Other community organizations that work with children and families

# Idaho Infant Toddler Program

Thank you for joining us as we work together to implement a system of coordinated and family-centered services to address the needs of Idaho infants and toddlers with delays or disabilities and their families





Any  
Questions?