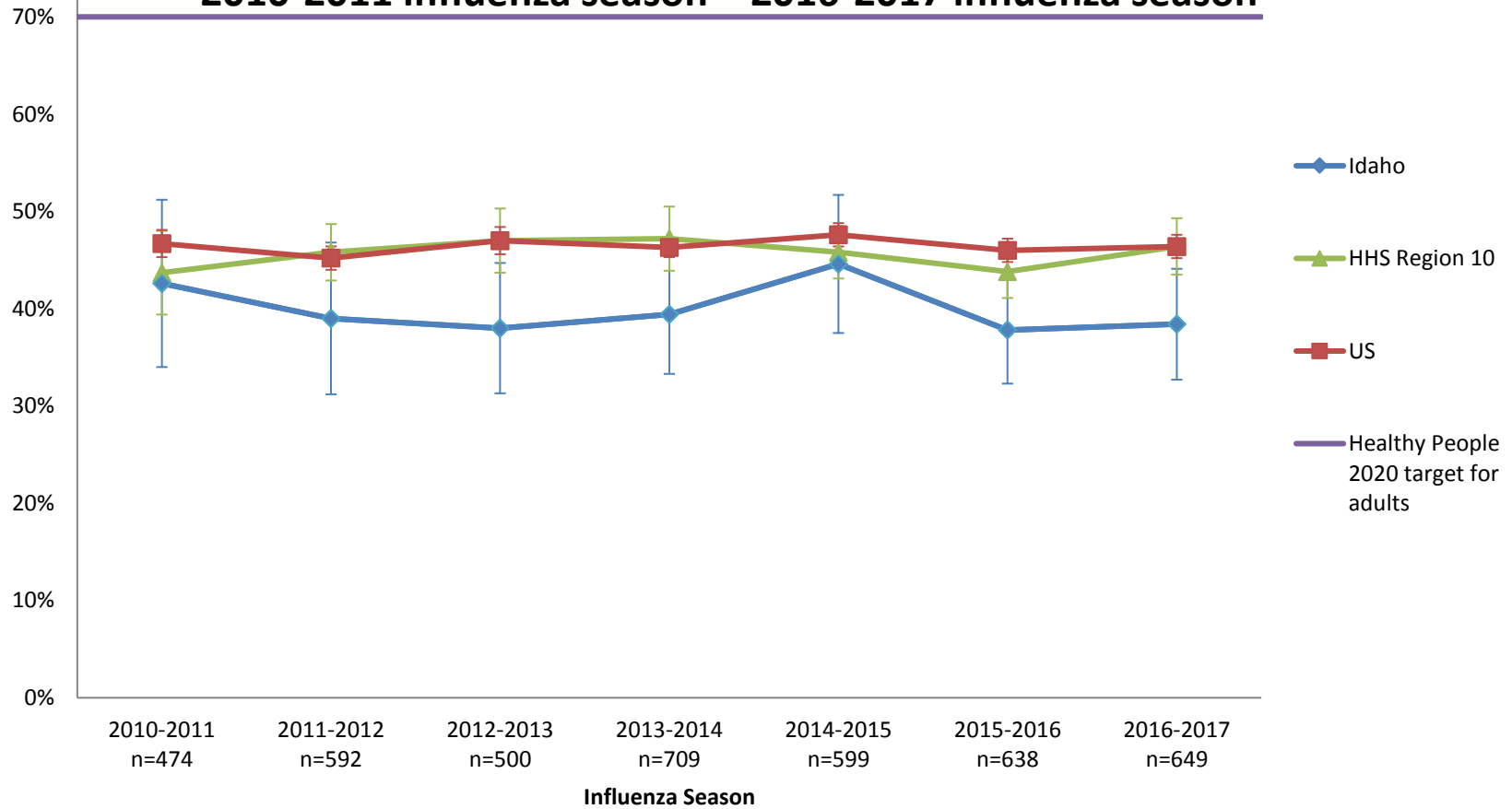


Influenza vaccination coverage among adults 18–64 years of age at high risk*, 2010-2011 influenza season – 2016-2017 influenza season



* Selected high-risk conditions include asthma, diabetes, or heart disease (before 2013-14 Influenza season) or asthma, diabetes, heart disease, chronic obstructive pulmonary disease, or cancers other than skin cancer (2013-14 Influenza season through present).