

	4:3:1:3:3:1				4:3:1:3:3:1:4				4+ DTapP/DTP/DT				3+ Polio vaccine				1+ MMR				1+ VAR			
	U.S.	± CI	Idaho	± CI	U.S.	± CI	Idaho	± CI	U.S.	± CI	Idaho	± CI	U.S.	± CI	Idaho	± CI	U.S.	± CI	Idaho	± CI	U.S.	± CI	Idaho	± CI
2006 n=222	76.9	1.0	68.2	6.9					85.2	0.9	82.4	5.8	92.8	0.6	92.2	3.9	92.3	0.6	88.0	4.8	89.2	0.7	77.4	6.1
2007 n=183	77.4	1.1	65.7	7.2	66.5	1.3	52.9	7.6	84.5	0.9	77.2	6.3	92.6	0.7	87.6	4.9	92.3	0.7	86.1	5.2	90.0	0.7	75.5	6.4
2008 n=282	76.1	1.1	60.4	6.8	68.4	1.2	54.2	6.7	84.6	1.0	77.6	5.9	93.6	0.6	91.8	3.7	92.1	0.7	86.1	5.4	90.7	0.7	80.7	5.8
2009 n=207	69.9	1.2	51.7	7.7	44.3	1.4	33.6	7.2	83.9	1.0	84.0	5.5	92.8	0.7	94.7	3.5	90.0	0.8	88.1	4.8	89.6	0.8	84.1	5.7
2010 n=271	74.9	1.1	61.2	6.7	56.6	1.3	42.6	6.8	84.4	1.0	77.9	5.7	93.3	0.7	89.2	4.7	91.5	0.7	87.2	5.0	90.4	0.8	83.7	5.1
2011 n=282	77.0	1.1	68.8	7.6	68.5	1.3	57.1	8.4	84.6	1.0	79.0	6.6	93.9	0.6	94.5	3.1	91.6	0.8	89.5	4.8	90.8	0.7	86.0	5.6
2012 n=289	71.9	1.4	64.5	8.1	68.4	1.4	63.0	8.2	82.5	1.2	76.6	6.7	92.8	0.7	92.6	3.9	90.8	0.8	93.3	3.6	90.2	0.1	90.3	4.3
2013 n=233	74.0	1.4	71.6	6.8	70.4	1.5	70.2	6.9	83.1	1.3	84.2	5.3	92.7	1.0	92.6	3.7	91.9	0.9	91.1	4.3	91.2	0.9	87.9	4.8
2014 n=235	74.6	1.4	67.2	8.0	71.6	1.5	65.9	8.0	84.2	1.2	77.7	7.2	93.3	0.8	93.1	4.3	91.5	0.9	89.7	5.1	91.0	0.9	90.0	5.0
2015 n=209	75.1	1.3	73.7	6.6	72.2	1.4	71.6	6.8	84.6	1.1	81.0	5.9	93.7	0.6	88.9	4.9	91.9	0.8	91.2	4.0	91.8	0.8	88.5	4.6
2016 n=225	73.8	1.5	75.2	6.6	70.7	1.5	73.9	6.7	83.4	1.3	83.9	5.7	91.9	1.0	91.1	4.4	91.1	1.0	88.6	4.9	90.6	1.0	86.9	5.2
2017 n=198	73.2	1.4	72.5	7.3	70.4	1.5	69.2	7.6	83.2	1.2	82.3	6.4	92.7	0.8	90.8	4.8	91.5	0.9	92.2	4.4	91.0	0.9	90.1	4.8

	HIB-FS				3+ Hib vaccine				HIB-PS				4+ PCV				2+ Hep A vaccine				Rotavirus			
	U.S.	± CI	Idaho	± CI	U.S.	± CI	Idaho	± CI	U.S.	± CI	Idaho	± CI	U.S.	± CI	Idaho	± CI	U.S.	± CI	Idaho	± CI	U.S.	± CI	Idaho	± CI
2006 n=222					93.4	0.6	91.3	4.2					68.4	1.1	72.1	6.5								
2007 n=183					92.6	0.7	86.3	5.1					75.3	1.2	66.6	7.2	17.8	1.1	21.5	6.4				
2008 n=282					90.9	0.7	77.6	3.4					80.1	1.1	74.8	6.3	40.4	1.2	38.6	6.5				
2009 n=207					86.6	1.0	64.1	7.5	92.1	0.8	90.9	4.5	80.4	1.1	82.5	6.0	46.6	1.4	37.3	7.5	43.9	1.4	30.3	7.2
2010 n=271	66.8	1.3	53.3	6.9	90.4	0.9	77.7	6.2	92.2	0.8	82.3	5.9	83.3	1.0	79.7	5.5	49.7	1.4	44.2	6.8	59.2	1.4	50.4	6.9
2011 n=282	80.4	1.1	75.0	7.3	94.0	0.6	94.7	3.1	94.2	0.6	94.9	3.1	84.4	1.0	84.1	5.7	52.2	1.4	45.2	8.6	67.3	1.3	62.0	8.2
2012 n=289	80.9	1.2	77.3	7.6	93.0	0.7	92.3	3.9	93.3	0.7	92.7	3.9	81.9	1.1	83.9	4.8	53.0	1.1	52.8	8.6	68.6	1.4	68.2	7.2
2013 n=233	82.0	1.3	80.0	5.9	92.8	0.9	91.2	4.3	93.3	0.9	94.7	3.1	82.0	1.3	87.3	4.6	54.7	1.6	60.7	7.3	72.6	1.5	74.6	6.4
2014 n=235	82.0	1.3	80.4	6.5	92.6	0.8	93.5	4.1	92.8	0.9	94.9	3.6	82.9	1.3	83.6	6.2	57.5	1.6	59.4	8.2	71.7	1.6	79.5	6.7
2015 n=209	82.7	1.1	81.2	5.9	92.4	0.7	88.3	4.9	93.7	0.7	90.3	4.4	84.1	1.1	84.4	5.5	59.6	1.5	58.8	7.3	73.2	1.4	74.5	6.6
2016 n=225	81.8	1.3	79.9	6.1	91.6	0.9	88.3	4.9	92.8	0.9	90.2	4.5	81.8	1.3	83.5	5.8	60.6	1.6	67.1	7.5	74.1	1.5	80.2	6.0
2017 n=198	80.7	1.3	83.8	6.0	91.8	0.9	92.0	4.4	92.8	0.8	92.0	4.4	82.4	1.3	82.4	6.3	59.7	1.6	66.0	7.6	73.2	1.6	78.5	6.7

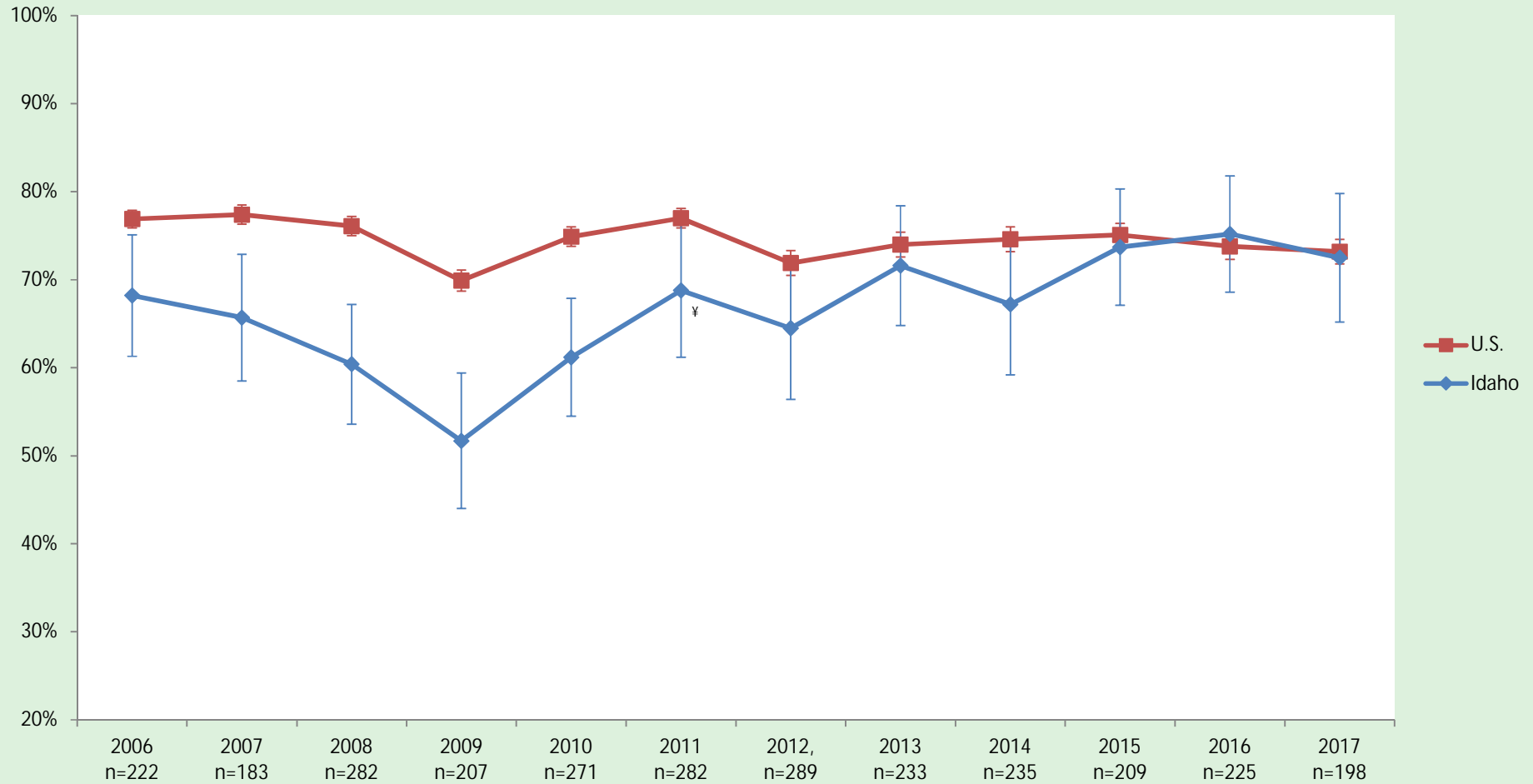
	3+ Hep B vaccine				1+ Hep B vaccine, 0-1 day				1+ Hep B vaccine, 0-2 day				1+ Hep B vaccine, 0-3 day			
	U.S.	± CI	Idaho	± CI	U.S.	± CI	Idaho	± CI	U.S.	± CI	Idaho	± CI	U.S.	± CI	Idaho	± CI
2006 n=222	93.3	0.6	92.9	3.5	42.8	1.1	42.3	7.2	48.5	1.1	47.5	7.3	50.1	1.1	48.6	7.3
2007 n=183	92.7	0.7	88.8	4.7	45.3	1.3	54.5	7.7	50.6	1.3	58.8	7.6	52.4	1.3	59.7	7.5
2008 n=282	93.5	0.7	93.3	3.4	47.2	1.3	59.8	6.7	53.7	1.3	63.5	6.6	55.3	1.3	64.0	6.6
2009 n=207	92.4	0.7	94.3	3.6	52.7	1.4	65.7	7.3	58.9	1.3	69.6	7.1	60.8	1.3	70.3	7.1
2010 n=271	91.8	0.7	86.8	4.9	56.1	1.3	62.3	6.5	62.5	1.3	64.2	6.4	64.1	1.3	65.2	6.4
2011 n=282	91.1	0.7	86.3	5.4	60.2	1.3	67.5	7.7	66.7	1.3	70.0	7.5	68.6	1.3	70.2	7.5
2012 n=289	89.0	0.9	87.7	5.0	63.2	1.4	68.3	7.9	70.0	1.4	70.0	7.8	71.6	1.4	70.1	7.8
2013 n=233	90.8	1.0	90.7	4.3	65.0	1.5	68.2	6.8	72.3	1.5	72.3	6.6	74.2	1.4	72.7	6.5
2014 n=235	91.6	0.9	95.1	3.5	64.0	1.6	71.8	7.7	70.8	1.6	74.5	7.5	72.4	1.5	75.4	7.4
2015 n=209	92.6	0.7	89.8	4.6	63.9	1.5	66.4	7.1	70.8	1.4	68.6	7.0	72.4	1.4	69.8	6.9
2016 n=225	90.5	1.1	89.4	4.7	63.4	1.6	63.8	8.0	69.6	1.6	68.1	7.7	71.1	1.6	68.3	7.7
2017 n=198	91.4	0.9	90.7	4.7	65.7	1.6	73.6	7.1	72.0	1.6	74.7	7.0	73.6	1.6	75.6	6.9

Full series Haemophilus influenzae type b (Hib) vaccine: ≥3 or ≥4 doses, depending on brand received
 Idaho data points in BOLD indicate a statistically significant change compared with the previous year, p=0.05
 Blue cells indicate NIS did not collect data during that year
 CI = Confidence Interval

Glossary of Abbreviations and Terms

4:3:1:3:3:1	The series of 4 or more DTaP vaccinations, 3 or more polio vaccinations, 1 or more MMR vaccinations, 3 or more Hib vaccinations of any type, 3 or more hepatitis B vaccinations, and 1 or more Varicella vaccinations given at age 12 months or older
4:3:1:3†:3:1:4	The series of 4 or more DTaP vaccinations, 3 or more polio vaccinations, 1 or more MMR vaccinations, 2 or 3 Hib vaccinations depending on brand received, 3 or more hepatitis B vaccinations, 1 or more Varicella vaccinations given at age 12 months or older, and 4 or more pneumococcal vaccinations
DTaP	Diphtheria and tetanus toxoids and acellular pertussis vaccine
DTP	Diphtheria and tetanus toxoids and pertussis vaccine
DT	Diphtheria and tetanus toxoid vaccine
FT	Full series
Hep A	Hepatitis A
Hep B	Hepatitis B
Hib	Haemophilus influenzae type b
MMR	Measles, mumps and rubella vaccine
NIS	National Immunization Survey
PCV	Pneumococcal conjugate vaccine
PS	Primary Series
VAR	Varicella Vaccine

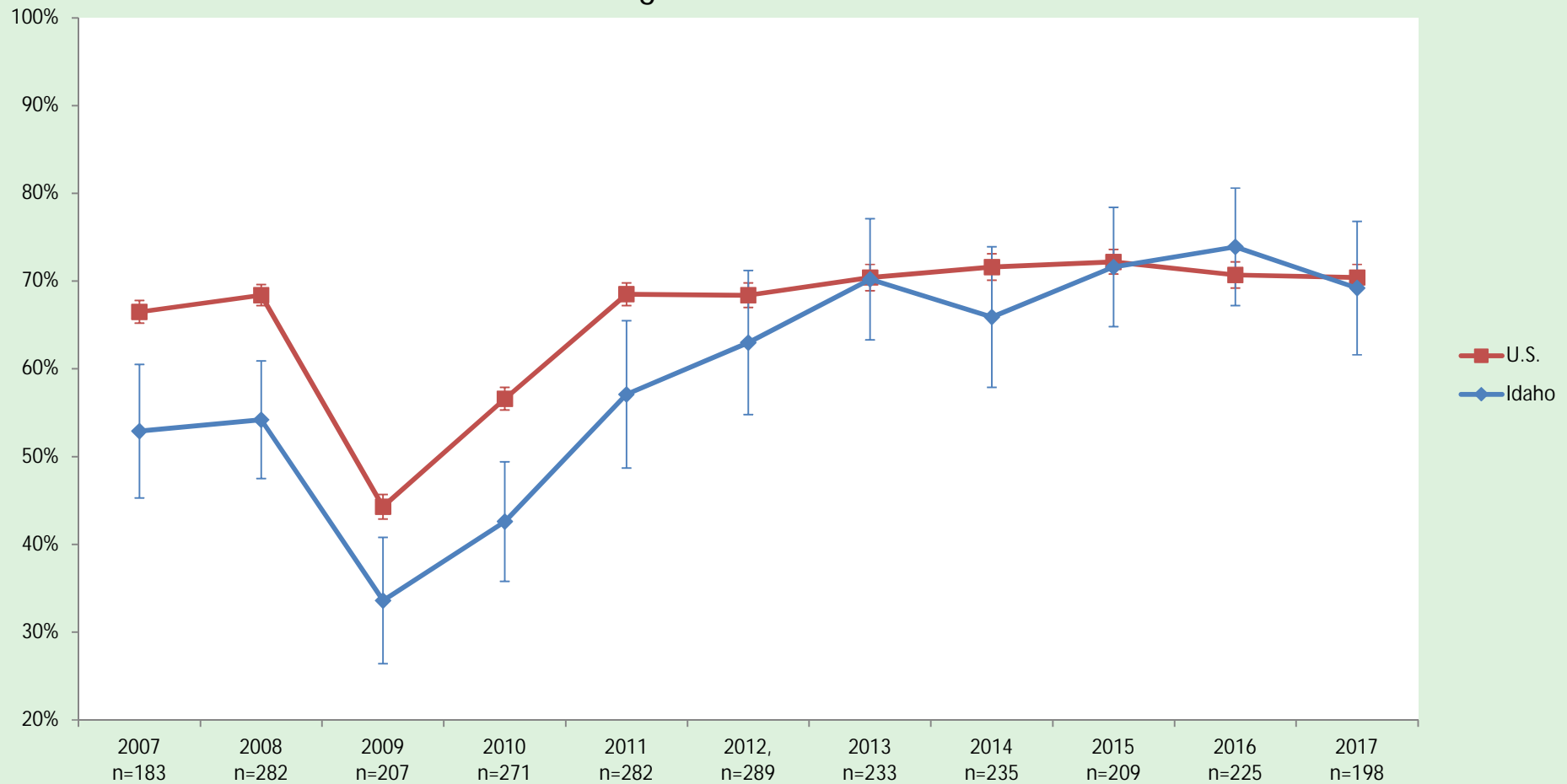
4:3:1:3:3:1* Vaccination Coverage 2006–2017 among children 19–35 months



* Refers to 4 or more doses of diphtheria and tetanus toxoids and pertussis vaccine, or diphtheria and tetanus toxoids (DTP/DT/DTaP), 3 or more doses of polio virus vaccine, 1 or more doses a measles-mumps-rubella (MMR) vaccine, 3 or more doses of Haemophilus influenzae type b (Hib) vaccine of any type, 3 or more doses of hepatitis B vaccine, and 1 or more doses of varicella vaccine

[‡] Refers to a statistically significant change compared with the previous year, p=0.05

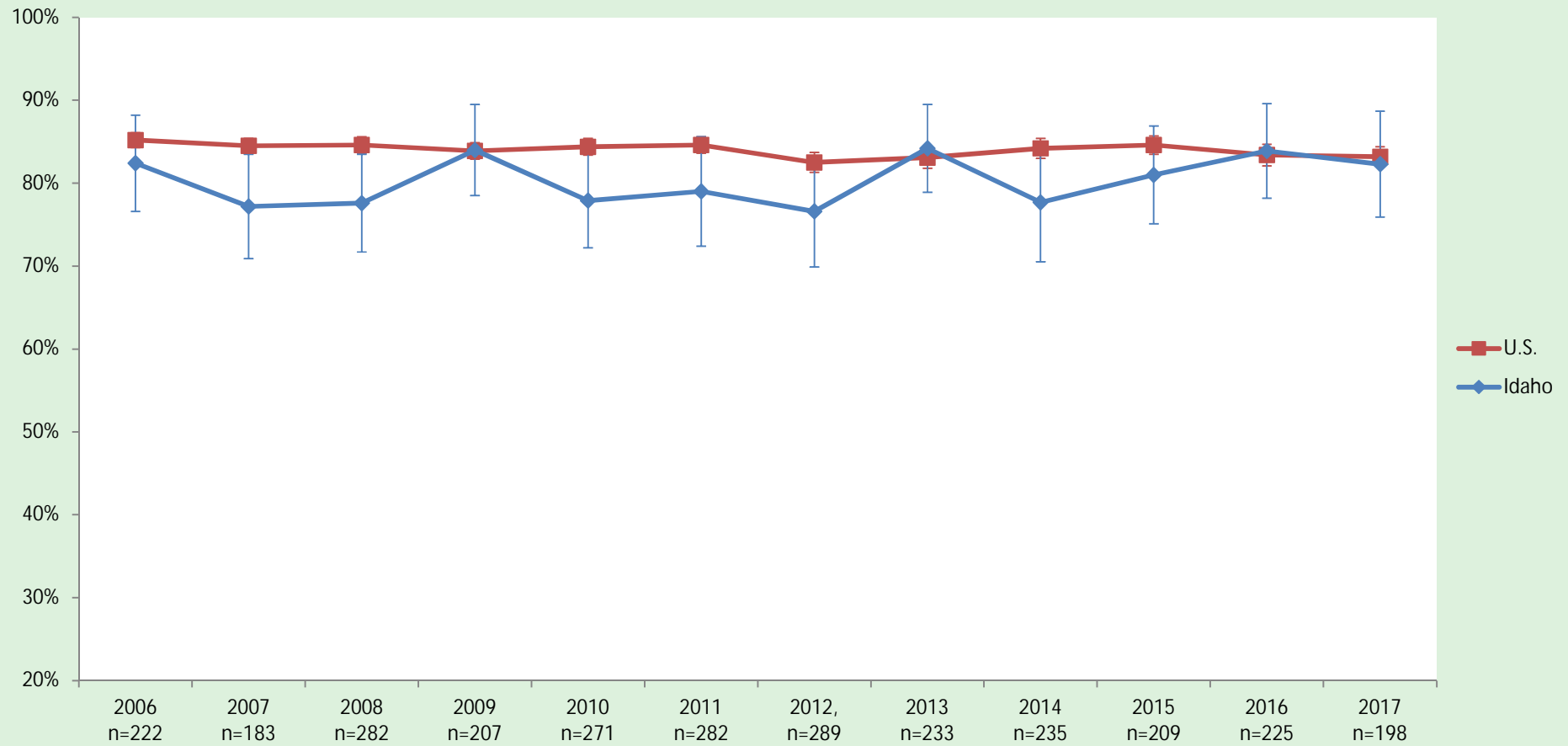
4:3:1:3[‡]3:1:4* Vaccination Coverage 2007–2017 among children 19–35 months



* Refers to 4 or more doses of diphtheria and tetanus toxoids and pertussis vaccine, or diphtheria and tetanus toxoids (DTP/DT/DTaP), 3 or more doses of polio virus vaccine, 1 or more doses of a measles-mumps-rubella vaccine (MMR), plus full series of Haemophilus influenzae type b (Hib), 3 or more doses of hepatitis B vaccine, 1 or more doses of varicella vaccine, and 4 or more doses of pneumococcal conjugate vaccine (PCV)

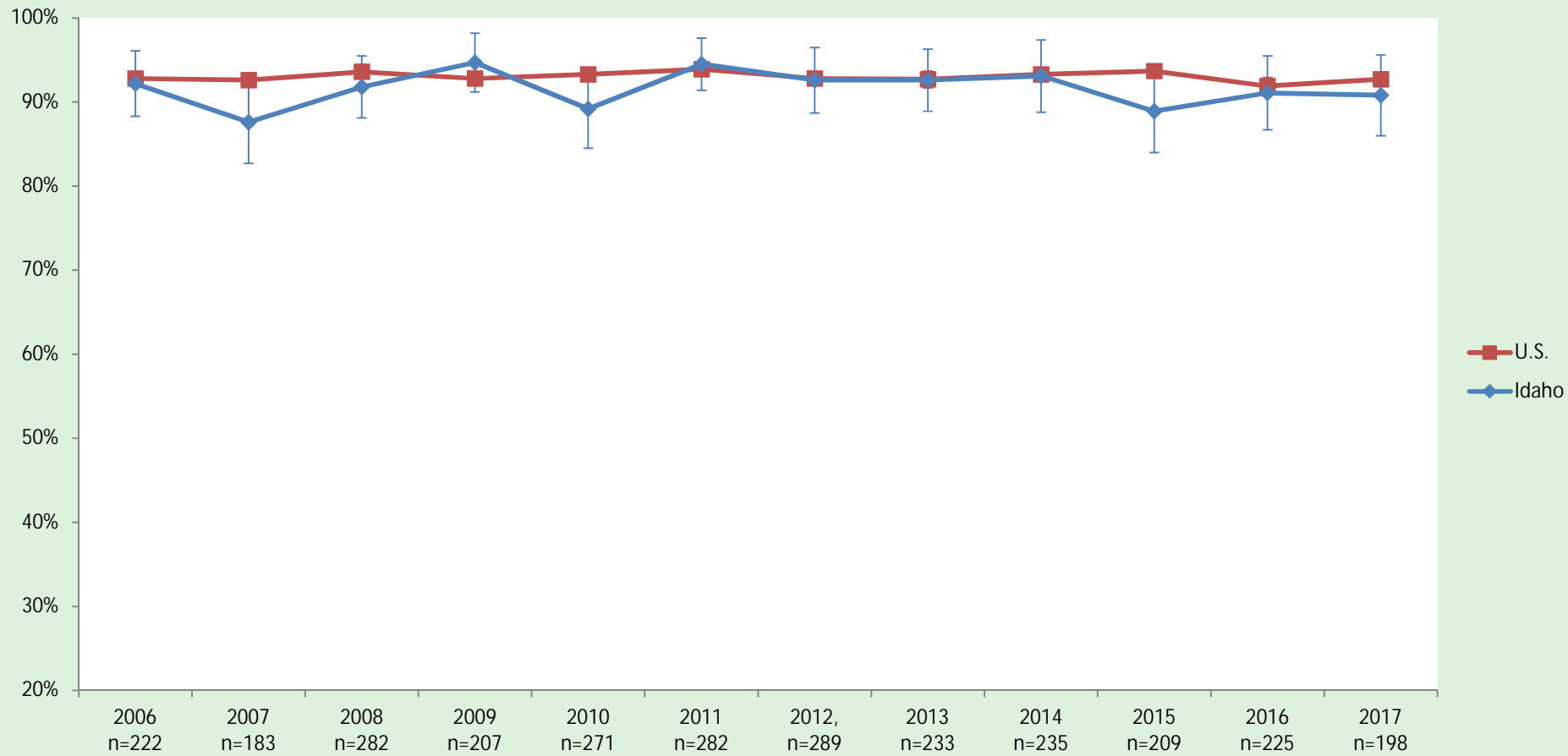
[‡] Full series Haemophilus influenzae type b (Hib) vaccine: ≥3 or ≥4 doses, depending on brand received

4+ DTaP* Vaccination Coverage 2006–2017 among children 19–35 months



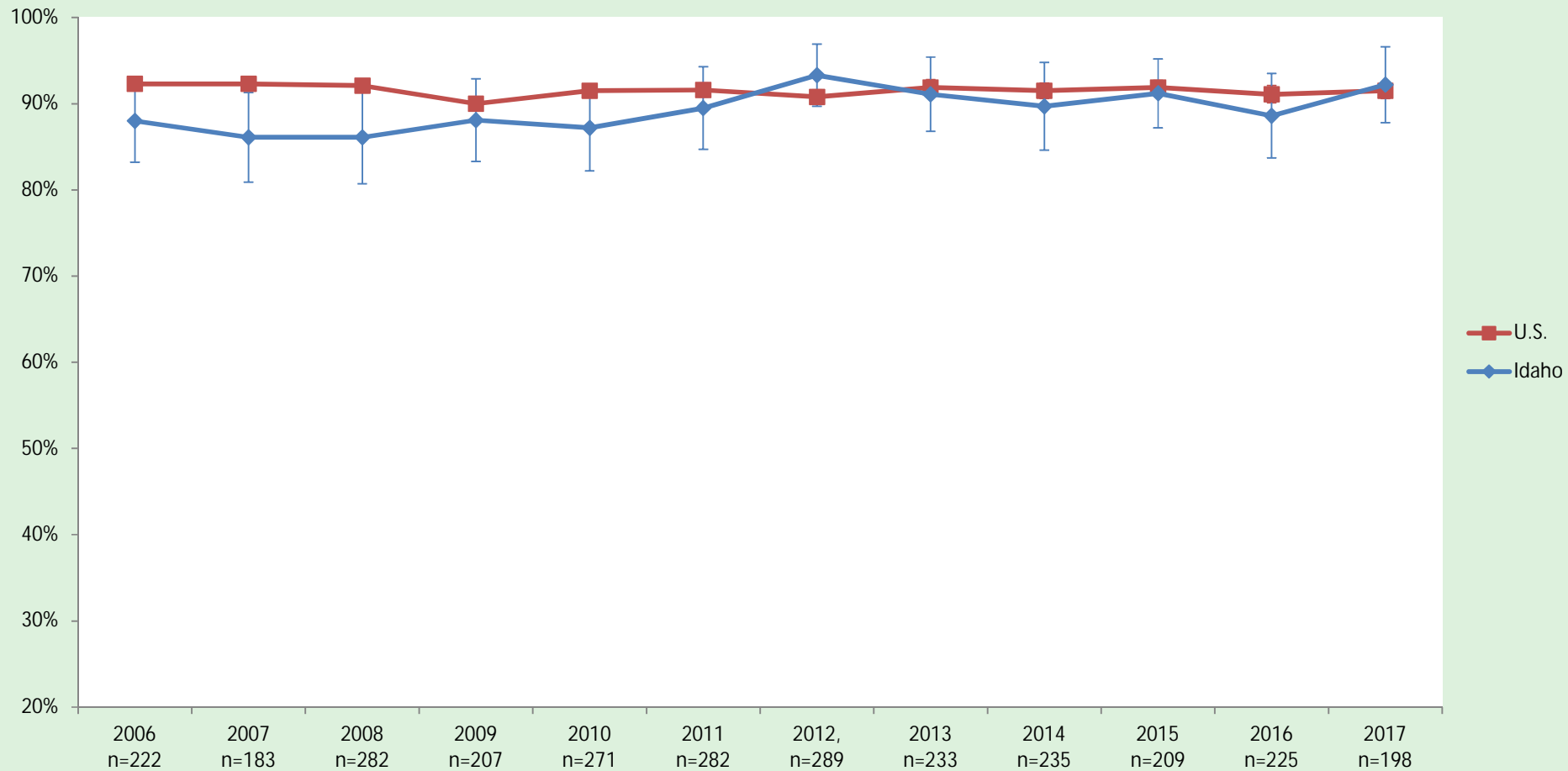
* Refers to 4 or more doses of diphtheria and tetanus toxoids and pertussis vaccine, or diphtheria and tetanus toxoids (DTP/DT/DTaP)

3+ Polio* Vaccination Coverage 2006–2017 among children 19–35 months



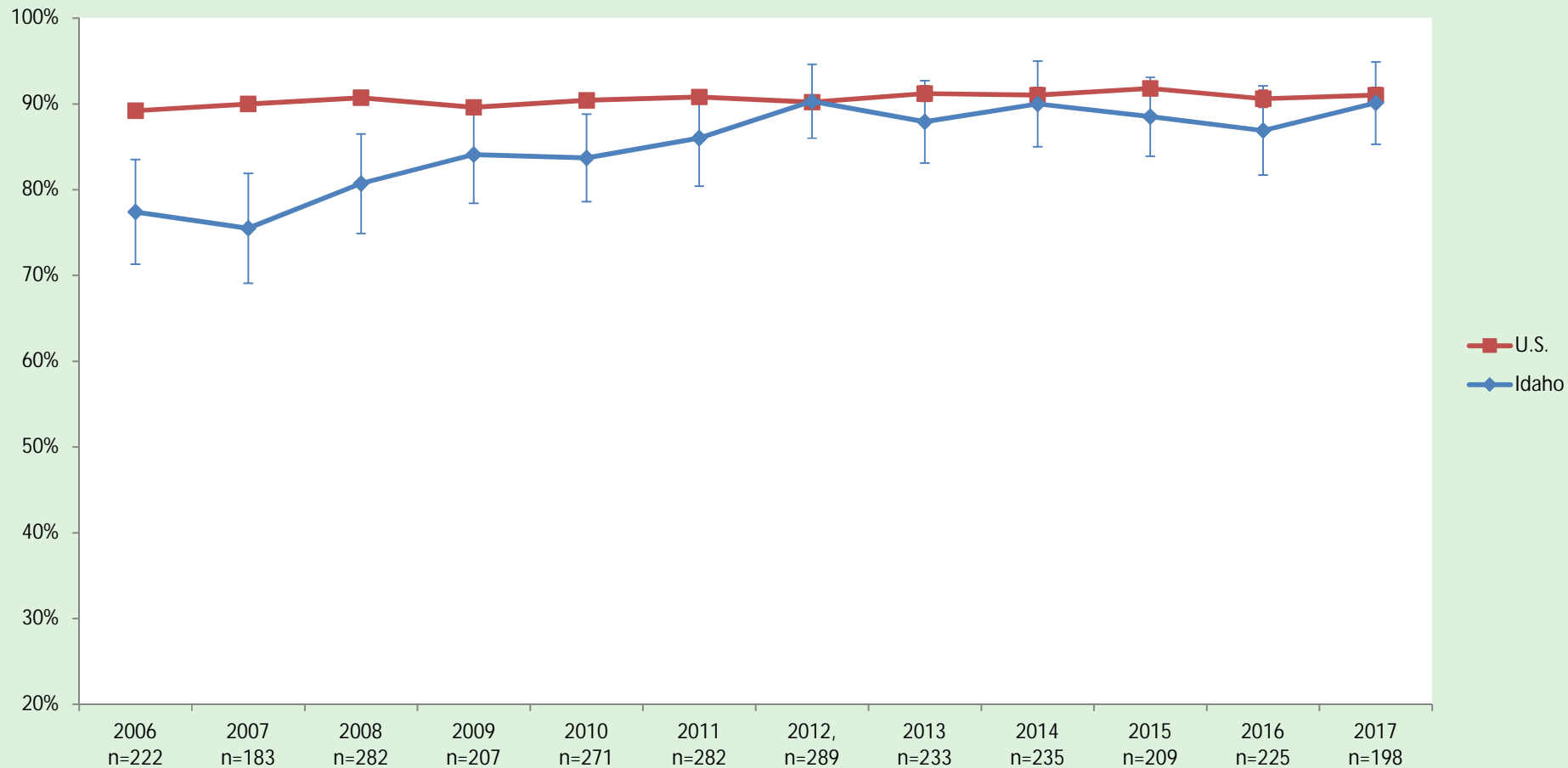
* Refers to 3 or more doses of any polio virus vaccine

1+ MMR* Vaccination Coverage 2006–2017 among children 19–35 months



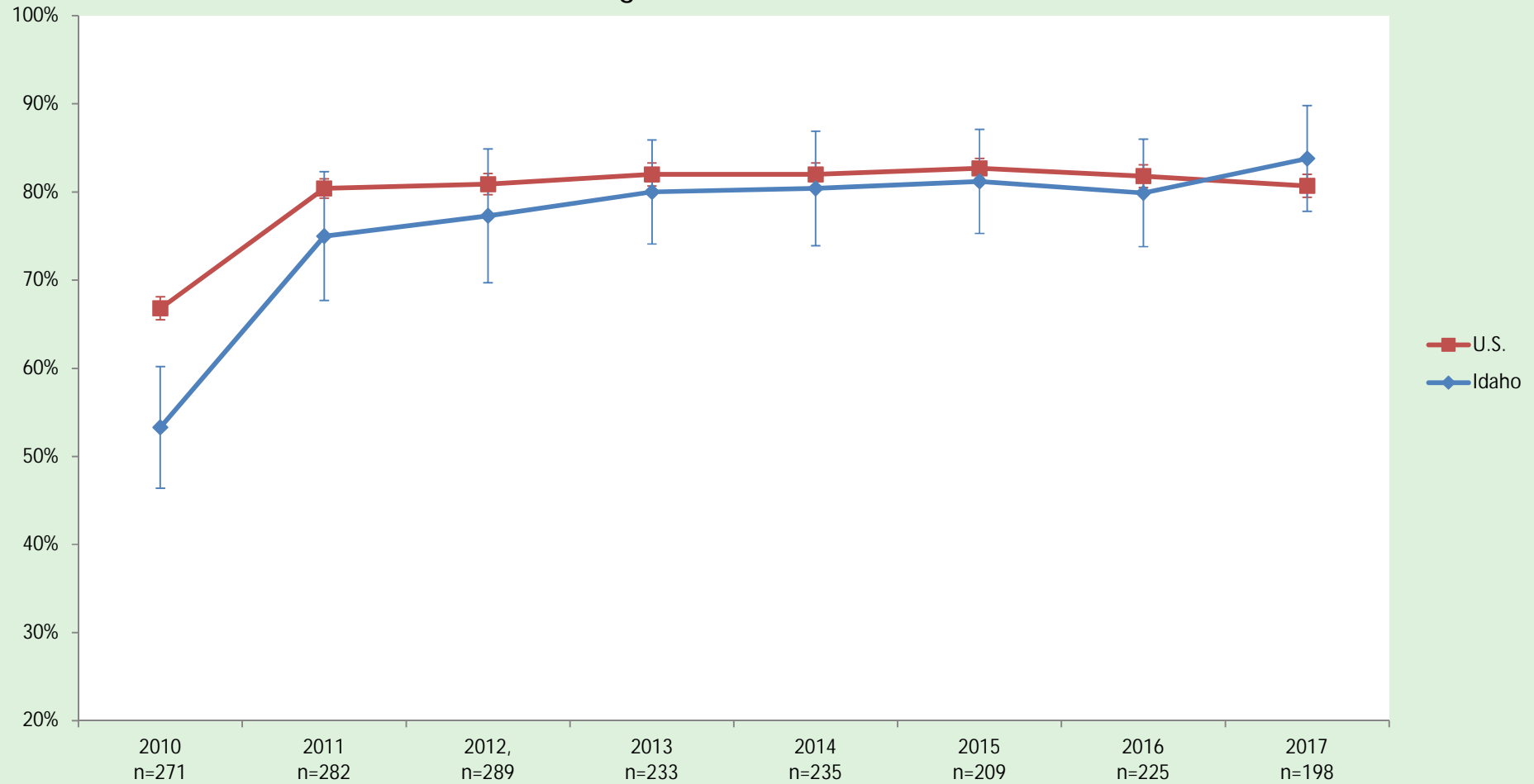
* Refers to 1 or more doses of a measles, mumps, and rubella vaccine (MMR)

1+ Varicella* Vaccination Coverage 2006–2017 among children 19–35 months



* Refers to 1 or more doses of varicella vaccine on or after child's first birthday, unadjusted for history of varicella illness

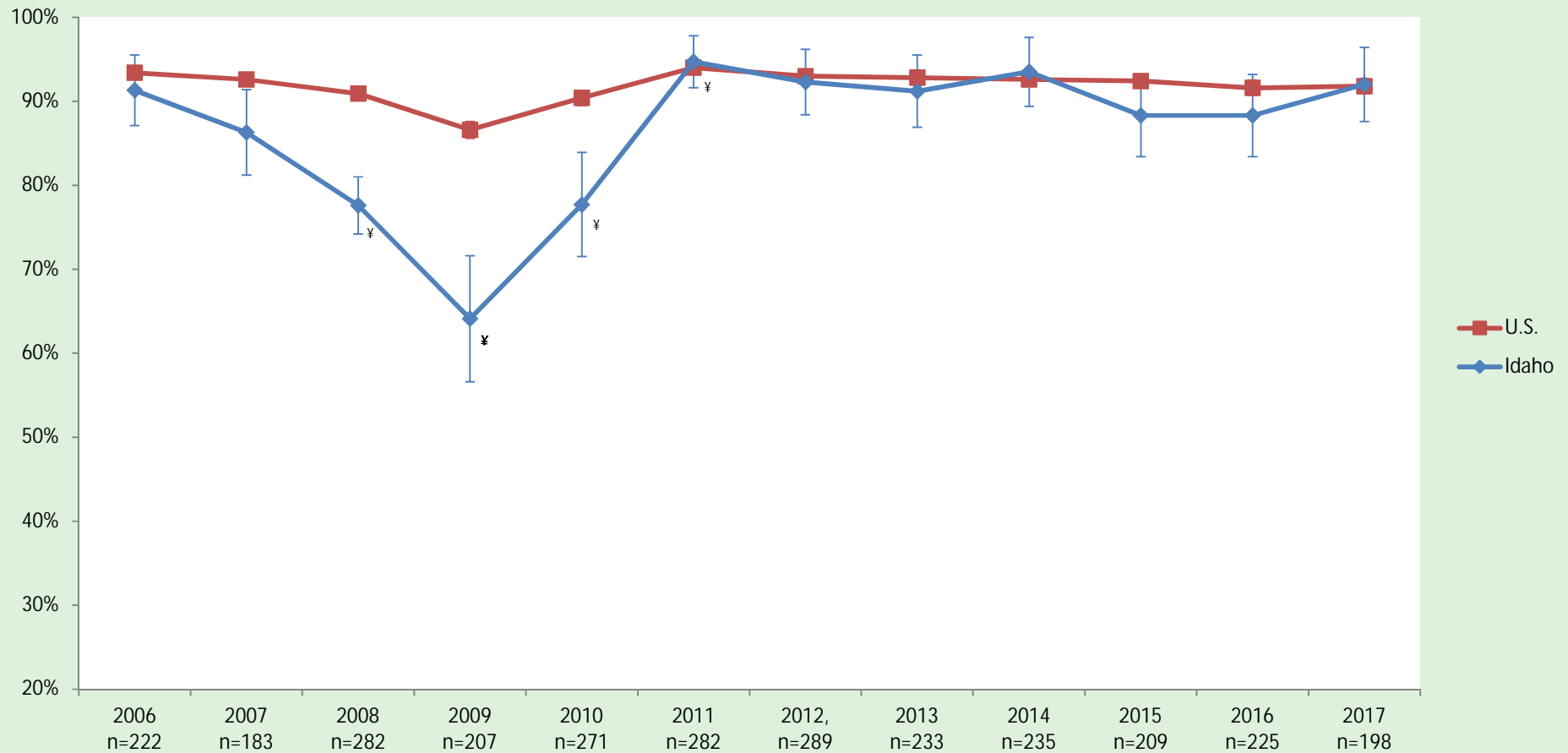
Hib-FS* Vaccination Coverage 2010–2017[§] among children 19–35 months



* Refers to full series Haemophilus influenzae type b (Hib) vaccine: ≥ 3 or ≥ 4 doses, depending on brand received

[§] This series sampling began in 2010

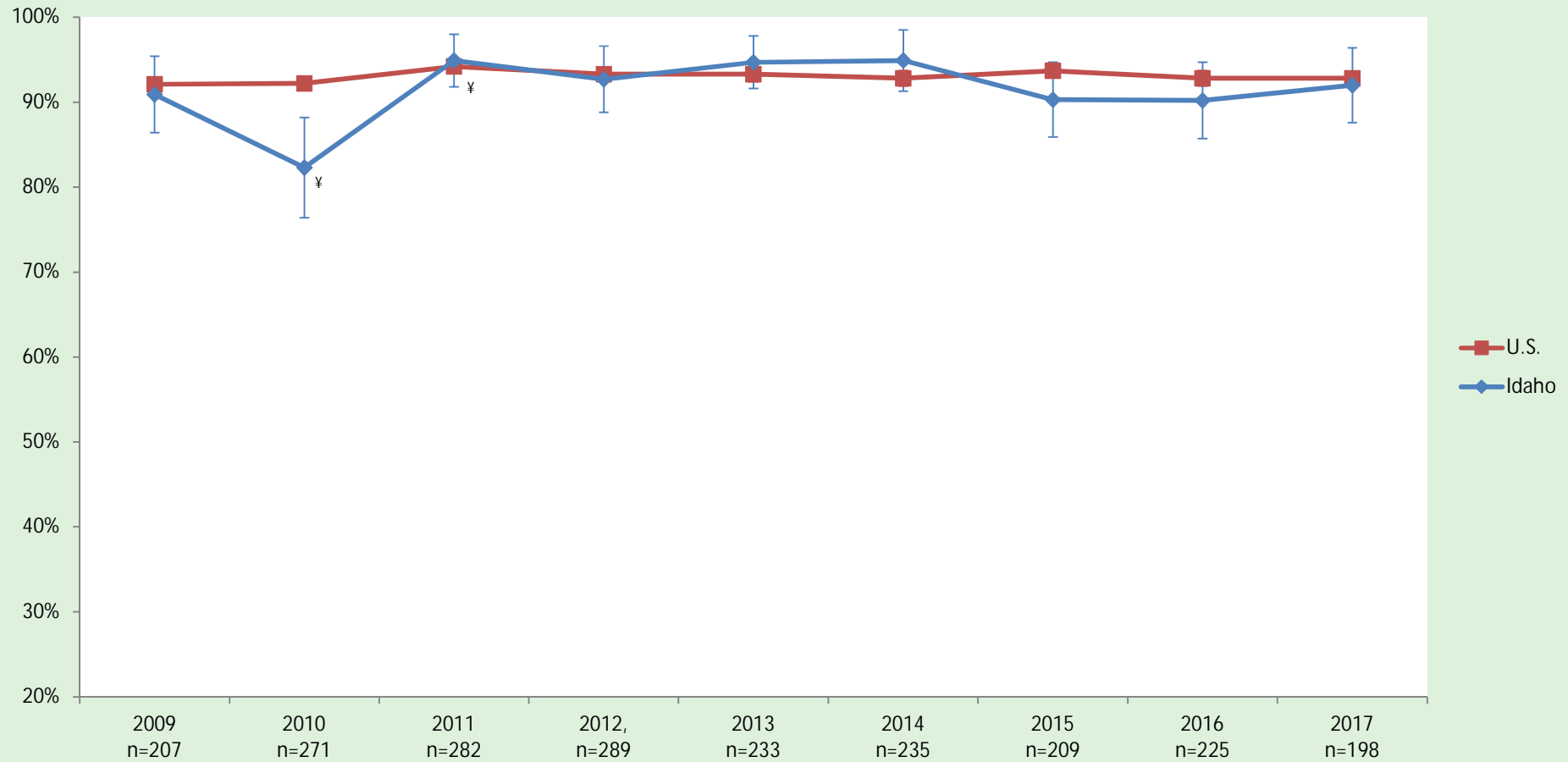
3+ Hib* Vaccination Coverage 2006–2017 among children 19–35 months



* Refers to 3 or more doses of Haemophilus influenzae type b (Hib) vaccine

¥ Refers to a statistically significant change compared with the previous year, p=0.05

Hib* -PS Vaccination Coverage 2009–2017[§] among children 19–35 months

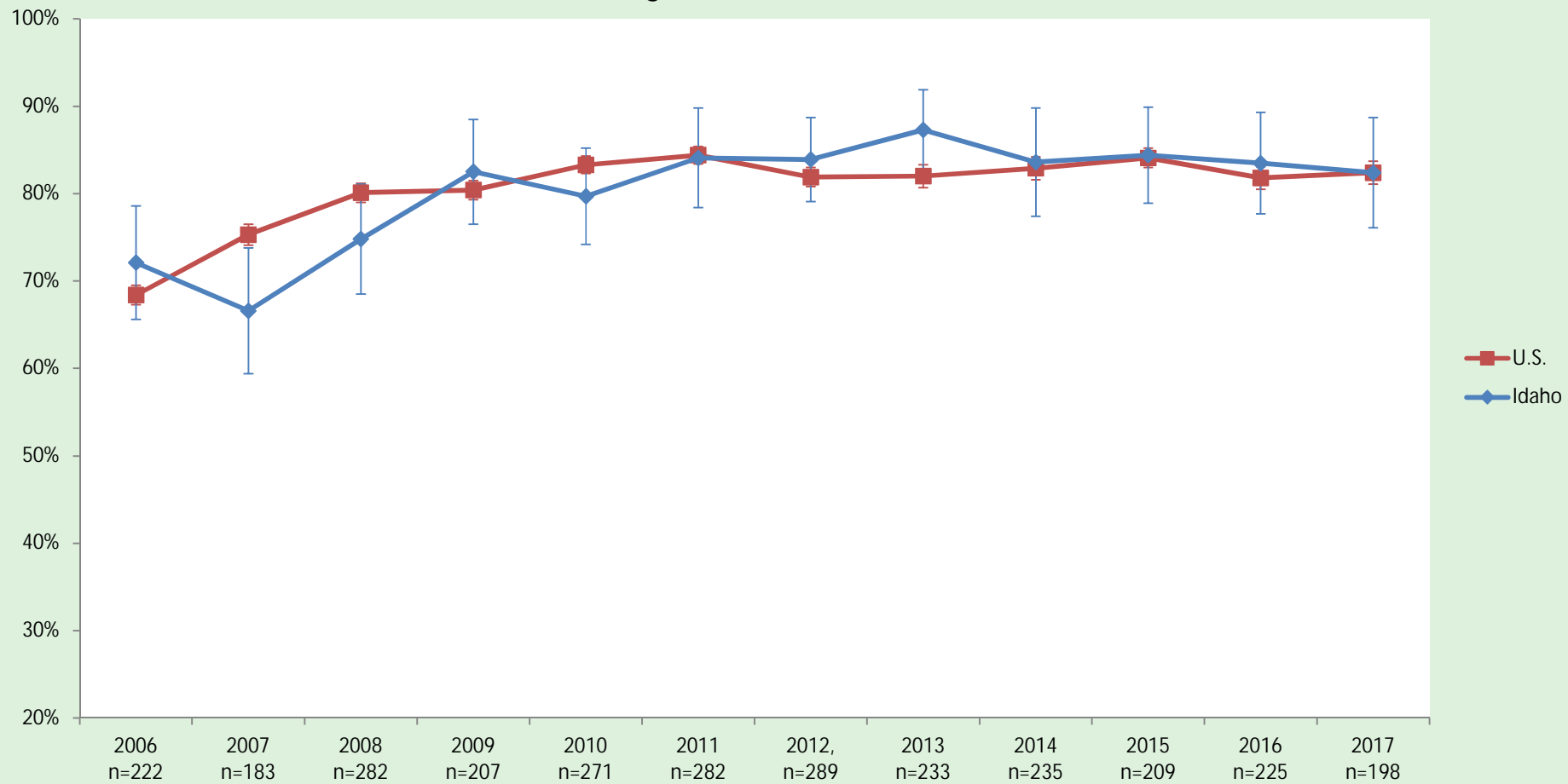


* Refers to primary series Haemophilus influenzae type b (Hib) vaccine: ≥ 2 or ≥ 3 doses, depending on brand received

[§] This series sampling began in 2009

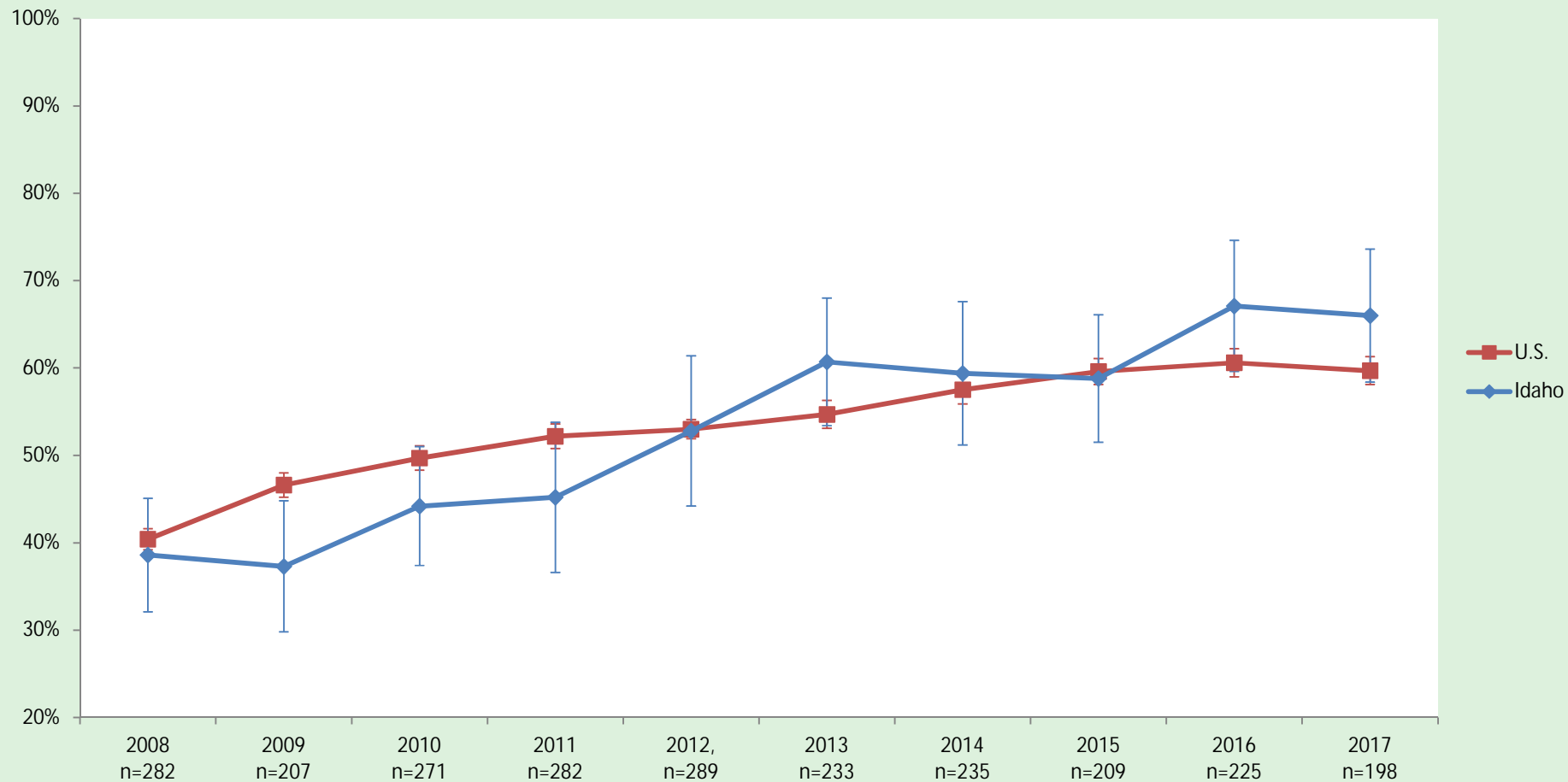
[†] Refers to a statistically significant change compared with the previous year, $p=0.05$

4+ PCV* Vaccination Coverage 2006–2017 among children 19–35 months



* Refers to 4 or more doses of pneumococcal conjugate vaccine (PCV)

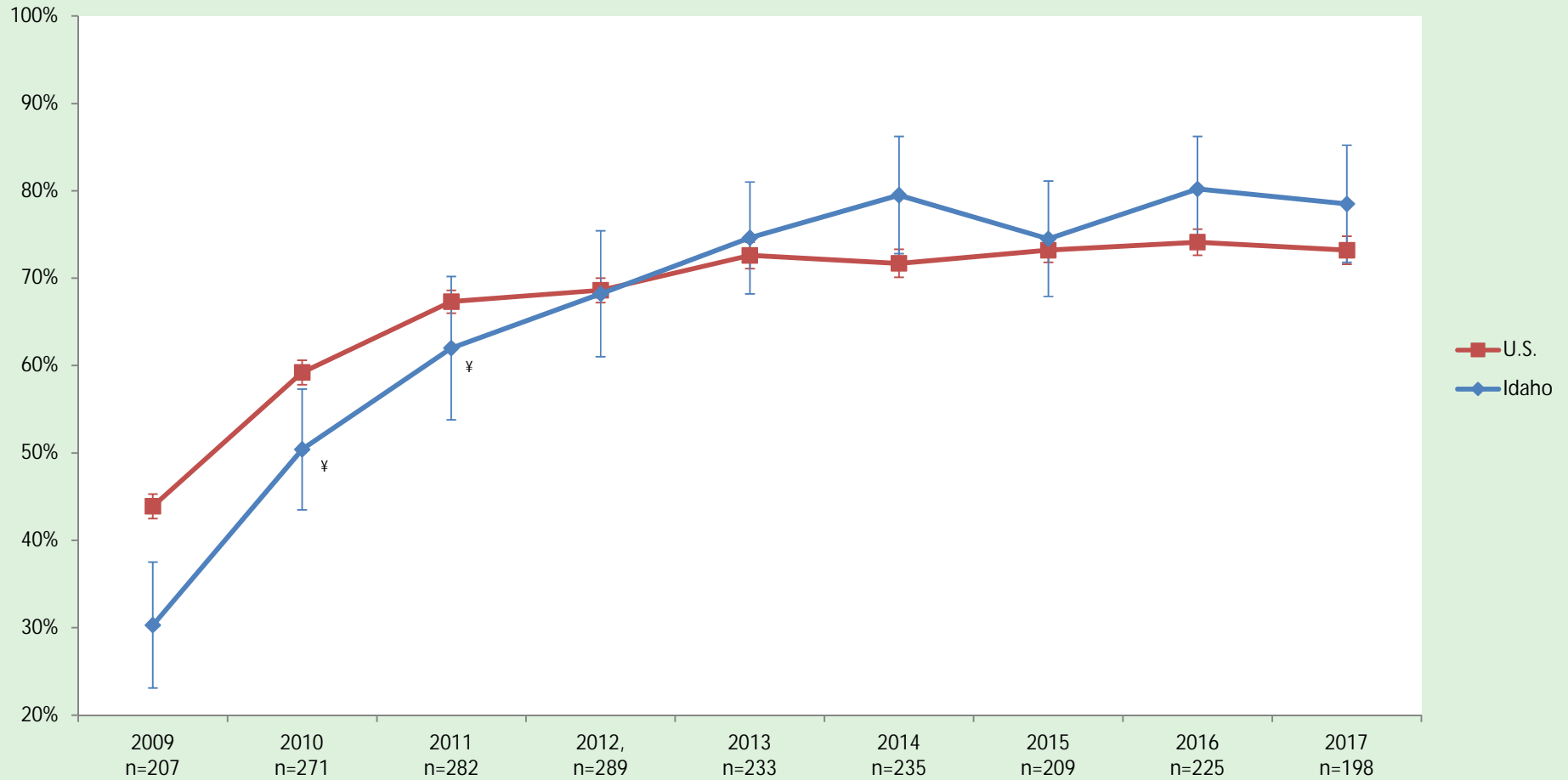
2+ Hep A* Vaccination Coverage 2008–2017[§] among children 19–35 months



* Refers to 2 or more doses of hepatitis A vaccine

[§] This series sampling began in 2008

Rotavirus* Vaccination Coverage 2009–2017[§] among children 19–35 months

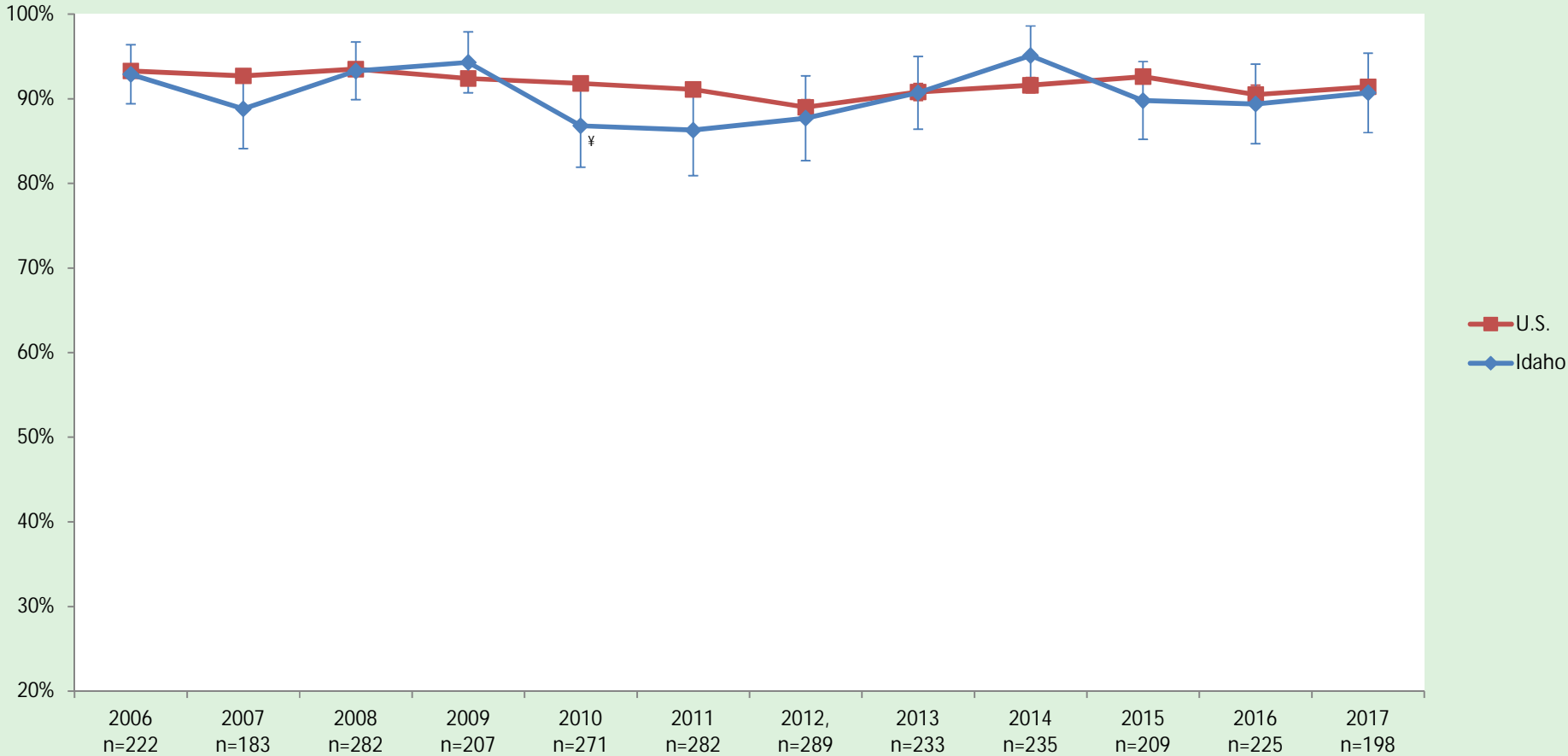


* Refers to ≥ 2 or ≥ 3 doses of rotavirus vaccine depending on brand received

[§] This series sampling began in 2009

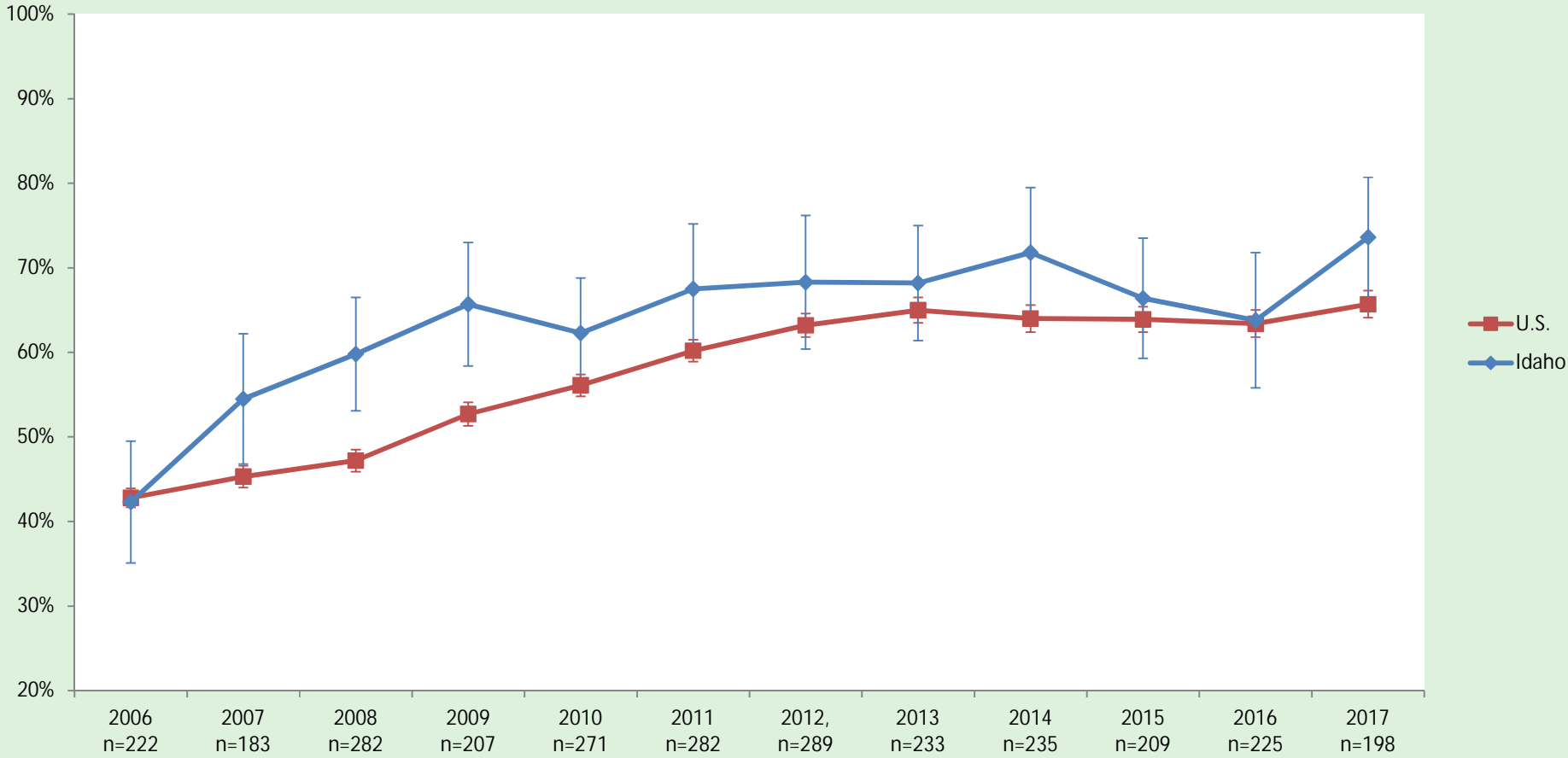
[‡] Refers to a statistically significant change compared with the previous year, $p=0.05$

3+ Hep B* Vaccination Coverage 2006–2017 among children 19–35 months



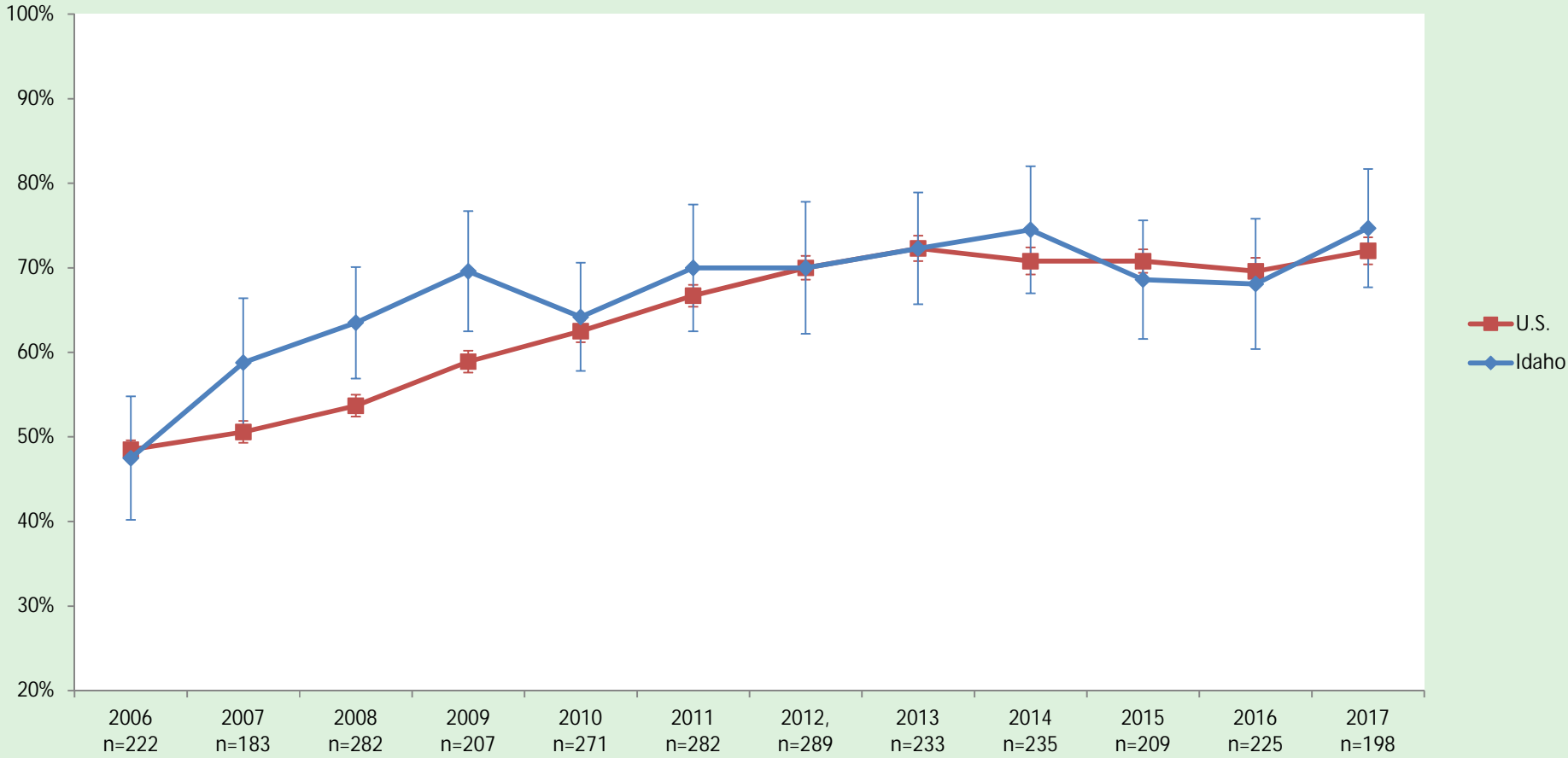
* Refers to 3 or more doses of hepatitis B vaccine
^y Refers to a statistically significant change compared with the previous year, p=0.05

1+ Hep B vaccine, 0-1 day 2006-2017 among children 19-35 months



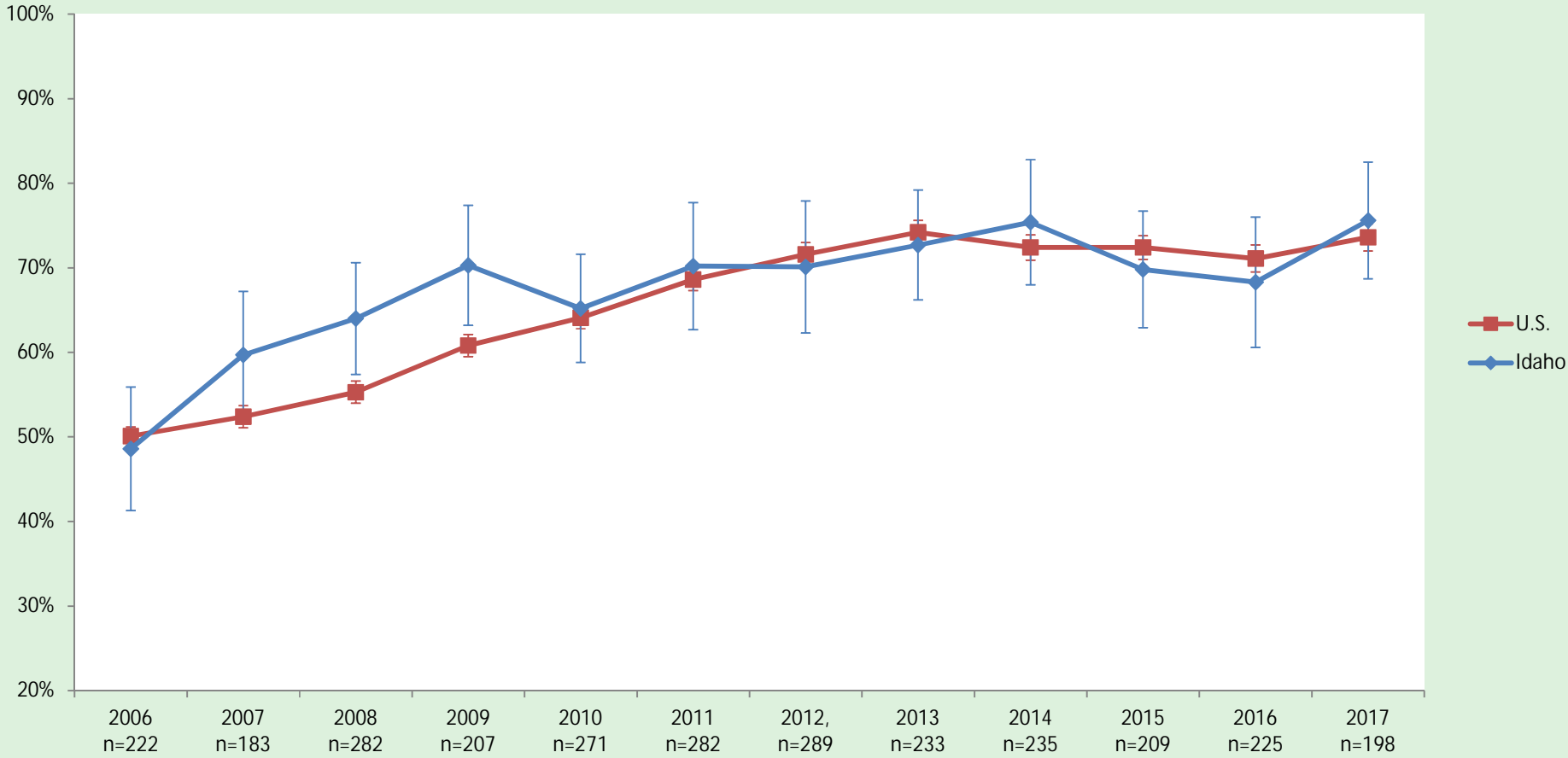
* Refers to 1 or more doses of hepatitis B vaccine given between 0-1 day from birth

1+ Hep B vaccine, 0-2 day 2006-2017 among children 19-35 months



* Refers to 1 or more doses of hepatitis B vaccine given between 0-2 day from birth

1+ Hep B vaccine, 0–3 day 2006–2017 among children 19–35 months



* Refers to 1 or more doses of hepatitis B vaccine given between 0–3 day from birth