

Division of Public Health / Idaho Department of Health & Welfare

IDAHO

VITAL

March 2017

Induced Abortion 2015

STATISTICS



IDAHO DEPARTMENT OF HEALTH & WELFARE
DIVISION OF PUBLIC HEALTH

2015 Vital Statistics – Induced Abortion

- Contact** For more information on this report or other vital statistics, please contact the Bureau of Vital Records and Health Statistics at (208) 334-6658. This report and other reports from the Bureau of Vital Records and Health Statistics are available on the web at www.healthstatistics.dhw.idaho.gov.
- Art Design** Special thanks go to Jeff Harder of Boise, Idaho, for his excellent artwork and his design of the cover and divider pages.
- Prepared by** This report was prepared by Pam Harder, Research Analyst Supervisor, and Sonya Deakins, Senior Research Analyst, each of the Idaho Department of Health and Welfare.
- Citation** Suggested citation: *Idaho Vital Statistics- Induced Abortion 2015*, Idaho Department of Health and Welfare, Division of Public Health, Bureau of Vital Records and Health Statistics, March 2017.

TABLE OF CONTENTS

	Page
INDUCED ABORTION DEFINITIONS AND FORMULAS	4
VITAL REGISTRATION AND DATA COLLECTION	4
INDUCED ABORTION	5
INDUCED ABORTION OCCURRING IN IDAHO	
2005-2015 Induced abortions in Idaho (<i>Idaho, districts, counties</i>)	6
2015 Induced abortions in Idaho: place of occurrence by patient’s residence	7
2005-2015 Induced abortions in Idaho: patient’s demographic characteristics	8
2005-2015 Induced abortions in Idaho: patient’s demographic characteristics (percentage)	9
2005-2015 Induced abortions in Idaho: length of gestation and termination procedure	10
2015 Induced abortions in Idaho: age of patient by length of gestation	11
2015 Induced abortions in Idaho: age of patient by previous abortions and live births	11
2015 Induced abortions in Idaho: termination procedure by length of gestation	12
2015 Induced abortions in Idaho: termination procedure by reported complications	12
2015 Induced abortions in Idaho: age of patient by marital status	13
2015 Induced abortions in Idaho: previous abortions and living children	13
2015 Induced abortions in Idaho: patient educational materials provided	14
2015 Induced abortions in Idaho: informed consent for teens aged under 18	14
INDUCED ABORTION OCCURRING TO IDAHO RESIDENTS	
2005-2015 Induced abortions to Idaho residents (<i>Idaho, districts, counties</i>)	15
2005-2015 Induced abortions to Idaho residents (<i>Idaho, districts, counties</i>) (rates)	16
2015 Induced abortions to Idaho residents: place of residence by place of occurrence	17
2015 Induced abortions to Idaho residents: rates and age (<i>Idaho, districts, counties</i>)	18
2015 Induced abortions to Idaho residents: ratio, race and ethnicity (<i>Idaho, districts, counties</i>)	19
2005-2015 Induced abortions to Idaho residents: age rate, and ratio	20
2015 Induced abortions to Idaho residents: termination procedure by length of gestation	21
2015 Induced abortions to Idaho residents: length of gestation (graph)	21
2005-2015 Induced abortions to Idaho residents by state of occurrence	22
Counties comprising Idaho Public Health Districts	23
INDUCED ABORTION TECHNICAL NOTES	24

DEFINITIONS AND FORMULAS

Residence Data Data allocated by place of residence of the registrant

Induced abortions to Idaho residents include:

- 1) The number of reported abortions occurring in Idaho to Idaho residents; and,
- 2) The number of reported abortions occurring in other states to Idaho residents.

Occurrence Data Data allocated by place where event occurred, regardless of the person's place of residence

Induced abortions occurring in Idaho include:

- 1) The number of reported abortions occurring in Idaho to Idaho residents; and,
- 2) The number of reported abortions occurring in Idaho to non-residents.

Induced Abortion A legal medical procedure that is intended to terminate a pregnancy without a live birth

INDUCED ABORTION RATE -- number of induced abortions per 1,000 females 15-44 years of age

$$\frac{\text{induced abortions}}{\text{females 15-44}} \times 1,000$$

INDUCED ABORTION RATIO -- number of induced abortions per 1,000 live births

$$\frac{\text{induced abortions}}{\text{live births}} \times 1,000$$

VITAL REGISTRATION AND DATA COLLECTION

Registration of Records

The Idaho Bureau of Vital Records and Health Statistics is responsible for managing Idaho's vital records program and for providing health statistics and analysis. Civil laws of every state provide for a continuous, permanent, and compulsory vital registration system. Idaho is responsible for inspecting each Idaho state record for promptness of filing, completeness, and accuracy of information; querying for missing or inconsistent information; numbering the records; preparing indexes; processing the records; issuing certified copies; and storing the documents for permanent reference and safekeeping.

Induced Abortion

The reporting of induced abortions occurring in Idaho has been required by state statute since July 1, 1977, as provided in Section 39-261, Idaho Code. In 1984, an interstate data exchange program for abortion data was initiated nationwide, whereby Idaho obtains non-identifying information about abortions occurring to Idaho residents in other states. Data in this report are provided for both Idaho resident abortions, regardless of where the procedure occurred, and abortions occurring in Idaho to either Idaho residents or non-residents. The cut-off date for induced abortion records in the data base was July 15, 2016 for 2015 records.

INDUCED ABORTION

U.S.

In 2013, the latest year available, 49 out of 52 reporting areas (50 states, District of Columbia, and New York City) provided data to the Centers for Disease Control and Prevention (CDC) regarding abortions in the United States. A total of 699,202 legal abortions were reported to the CDC by the 49 reporting areas in 2013. In 2013, the U.S. abortion ratio was 210 abortions per 1,000 live births in the reporting area. The number of abortions in 2013 decreased 31,120 (-4.3 percent) from 2012, for which 699,202 abortions were reported from the same 49 reporting areas¹.

	INDUCED ABORTIONS	RATIO PER 1,000 LIVE BIRTHS	RATE PER 1,000 FEMALES AGED 15-44
U.S 2013 ¹	699,202	210	13.2
Idaho 2015 (Occurrence)	1,272	56.6	NA
Idaho 2015 (Residence)	1,686	73.8	5.3

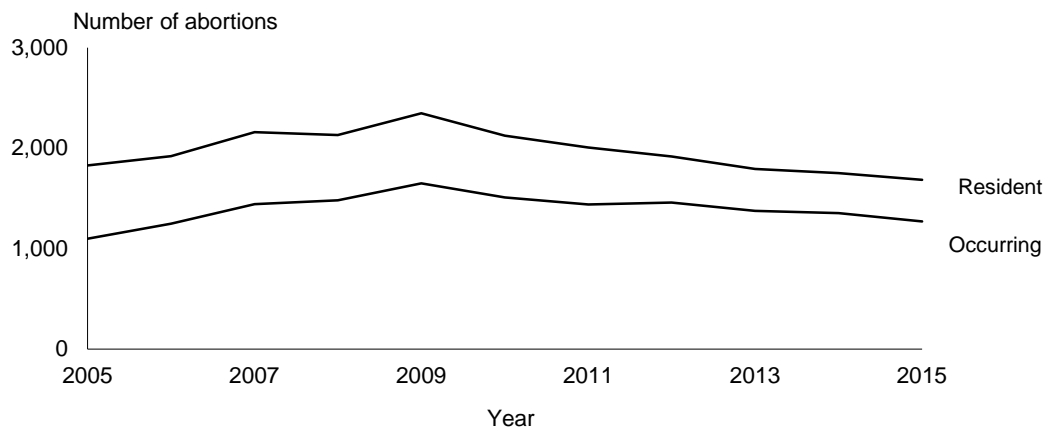
Abortion in Idaho

The reporting of induced abortions occurring in Idaho has been required by state statute since July 1, 1977. The reported numbers increased from 708 during the last half of 1977 to a high of 2,706 in 1981. The number of abortions reported in Idaho in 2015 was 1,272, a 6.0 percent decrease from the 1,353 reported in 2014. Abortions occurring in Idaho may be to Idaho residents or non-residents. Of the 1,272 procedures performed in Idaho, 1,213 (95.4 percent) were to residents of Idaho and 59 (4.6 percent) were to non-residents.

Idaho Resident Abortion

Abortions to Idaho residents decreased 3.7 percent from 1,751 in 2014 to 1,686 in 2015. Abortions to Idaho residents may occur in Idaho or out of state. In 2015, 1,213 abortions to Idaho residents occurred in Idaho, and 473 were performed out of state. Of the 473 abortions obtained by Idaho residents out of state, 354 occurred in Washington, 86 in Utah, 21 in Montana, and 12 in Oregon.

IDAHO INDUCED ABORTIONS Idaho Residents and Abortions in Idaho 2005-2015



1. "Abortion Surveillance – United States, 2013", Morbidity and Mortality Weekly Report, Centers for Disease Control and Prevention, Vol. 64/No. SS 10, November 25, 2016.

INDUCED ABORTIONS OCCURRING IN IDAHO
District and County of Occurrence
2005-2015

OCCURRENCE	2005	2006	2007	2008	2009	2010	2011	2012	2013	2014	2015
TOTAL IN IDAHO	1,099	1,249	1,442	1,481	1,650	1,510	1,440	1,458	1,375	1,353	1,272
District 1	-	-	-	-	-	-	-	-	1	-	-
District 2	-	-	-	-	-	-	-	-	-	-	-
District 3	-	-	-	-	-	-	-	-	-	-	-
District 4	1,018	1,218	1,441	1,473	1,572	1,370	1,240	1,200	1,106	1,090	1,068
District 5	18	-	-	8	76	140	199	258	267	263	203
District 6	63	31	1	-	-	-	-	-	-	-	-
District 7	-	-	-	-	2	-	1	-	1	-	1
Ada	1,018	1,218	1,441	1,473	1,572	1,370	1,240	1,200	1,106	1,089	1,068
Adams	-	-	-	-	-	-	-	-	-	-	-
Bannock	63	31	1	-	-	-	-	-	-	-	-
Bear Lake	-	-	-	-	-	-	-	-	-	-	-
Benewah	-	-	-	-	-	-	-	-	-	-	-
Bingham	-	-	-	-	-	-	-	-	-	-	-
Blaine	18	-	-	-	-	-	-	-	-	-	-
Boise	-	-	-	-	-	-	-	-	-	-	-
Bonner	-	-	-	-	-	-	-	-	-	-	-
Bonneville	-	-	-	-	-	-	-	-	-	-	-
Boundary	-	-	-	-	-	-	-	-	-	-	-
Butte	-	-	-	-	-	-	-	-	-	-	-
Camas	-	-	-	-	-	-	-	-	-	-	-
Canyon	-	-	-	-	-	-	-	-	-	-	-
Caribou	-	-	-	-	-	-	-	-	-	-	-
Cassia	-	-	-	-	-	-	-	-	-	-	-
Clark	-	-	-	-	-	-	-	-	-	-	-
Clearwater	-	-	-	-	-	-	-	-	-	-	-
Custer	-	-	-	-	-	-	-	-	-	-	-
Elmore	-	-	-	-	-	-	-	-	-	-	-
Franklin	-	-	-	-	-	-	-	-	-	-	-
Fremont	-	-	-	-	-	-	-	-	-	-	-
Gem	-	-	-	-	-	-	-	-	-	-	-
Gooding	-	-	-	-	-	-	-	-	-	-	-
Idaho	-	-	-	-	-	-	-	-	-	-	-
Jefferson	-	-	-	-	-	-	-	-	-	-	-
Jerome	-	-	-	-	-	-	-	-	-	-	-
Kootenai	-	-	-	-	-	-	-	-	1	-	-
Latah	-	-	-	-	-	-	-	-	-	-	-
Lemhi	-	-	-	-	-	-	-	-	-	-	-
Lewis	-	-	-	-	-	-	-	-	-	-	-
Lincoln	-	-	-	-	-	-	-	-	-	-	-
Madison	-	-	-	-	2	-	1	-	1	-	1
Minidoka	-	-	-	-	-	-	-	-	-	-	-
Nez Perce	-	-	-	-	-	-	-	-	-	-	-
Oneida	-	-	-	-	-	-	-	-	-	-	-
Owyhee	-	-	-	-	-	-	-	-	-	-	-
Payette	-	-	-	-	-	-	-	-	-	-	-
Power	-	-	-	-	-	-	-	-	-	-	-
Shoshone	-	-	-	-	-	-	-	-	-	-	-
Teton	-	-	-	-	-	-	-	-	-	-	-
Twin Falls	-	-	-	8	76	140	199	258	267	263	203
Valley	-	-	-	-	-	-	-	-	-	1	-
Washington	-	-	-	-	-	-	-	-	-	-	-

INDUCED ABORTIONS OCCURRING IN IDAHO
District and County of Occurrence by Place of Residence
2015

OCCURRENCE	ABORTIONS OCCURRING IN IDAHO		
	Abortion in Idaho, Place of Occurrence, Total	Place of Occurrence, Patient Resident of Idaho	Place of Occurrence, Patient Resident of Other State
IDAHO	1,272	1,213	59
District 1	-	-	-
District 2	-	-	-
District 3	-	-	-
District 4	1,068	1,026	42
District 5	203	186	17
District 6	-	-	-
District 7	1	1	-
Ada	1,068	1,026	42
Adams	-	-	-
Bannock	-	-	-
Bear Lake	-	-	-
Benewah	-	-	-
Bingham	-	-	-
Blaine	-	-	-
Boise	-	-	-
Bonner	-	-	-
Bonneville	-	-	-
Boundary	-	-	-
Butte	-	-	-
Camas	-	-	-
Canyon	-	-	-
Caribou	-	-	-
Cassia	-	-	-
Clark	-	-	-
Clearwater	-	-	-
Custer	-	-	-
Elmore	-	-	-
Franklin	-	-	-
Fremont	-	-	-
Gem	-	-	-
Gooding	-	-	-
Idaho	-	-	-
Jefferson	-	-	-
Jerome	-	-	-
Kootenai	-	-	-
Latah	-	-	-
Lemhi	-	-	-
Lewis	-	-	-
Lincoln	-	-	-
Madison	1	1	-
Minidoka	-	-	-
Nez Perce	-	-	-
Oneida	-	-	-
Owyhee	-	-	-
Payette	-	-	-
Power	-	-	-
Shoshone	-	-	-
Teton	-	-	-
Twin Falls	203	186	17
Valley	-	-	-
Washington	-	-	-

INDUCED ABORTIONS OCCURRING IN IDAHO
Selected Demographic Characteristics
2005-2015

DEMOGRAPHIC CHARACTERISTICS	2005	2006	2007	2008	2009	2010	2011	2012	2013	2014	2015
TOTAL IN IDAHO	1,099	1,249	1,442	1,481	1,650	1,510	1,440	1,458	1,375	1,353	1,272
Age:											
10-14	6	8	5	3	6	6	6	3	3	7	2
15-19	208	257	290	274	283	246	207	235	173	175	165
15-17	73	113	99	80	85	75	54	68	45	39	48
18-19	135	144	191	194	198	171	153	167	128	136	117
20-24	330	398	475	511	562	509	475	484	492	462	433
25-29	267	268	318	317	353	335	329	353	340	339	274
30-34	138	162	178	211	229	251	252	212	177	201	202
35-39	107	112	122	118	143	121	115	106	135	124	144
40-44	41	42	51	42	72	40	53	59	50	42	45
45+	2	1	3	5	2	2	2	5	5	3	7
Not stated	-	1	-	-	-	-	1	1	-	-	-
Idaho residence status:											
Resident	1,065	1,215	1,390	1,439	1,583	1,435	1,372	1,379	1,321	1,283	1,213
Non-resident	34	34	52	42	67	75	68	79	54	70	59
Marital status:											
Married	219	256	309	269	318	227	226	197	225	223	231
Not married	878	993	1,132	1,210	1,331	1,283	1,209	1,257	1,143	1,103	997
Not stated	2	-	1	2	1	-	5	4	7	27	44
Previous induced abortions:											
None	856	976	1,104	1,078	1,174	1,055	1,007	1,049	1,014	937	932
1	177	199	272	311	347	331	317	251	251	292	252
2	46	48	47	64	89	85	75	69	64	87	59
3+	15	19	17	28	38	39	32	28	28	36	26
Not stated	5	7	2	-	2	-	9	61	18	1	3
Race											
White	1,018	1,133	1,288	1,358	1,500	1,315	1,244	1,260	1,178	1,150	1,041
Black	16	14	23	14	22	22	16	23	20	22	28
American Indian	19	25	17	18	20	24	9	12	22	15	11
Asian/Pacific Islander	35	38	41	48	50	45	42	45	38	41	27
Other	1	3	11	34	39	32	39	60	78	51	57
Race not stated	10	36	62	9	19	72	90	58	39	74	108
Ethnicity*											
Hispanic	133	136	140	151	231	246	195	222	202	209	184
Non-Hispanic	959	1,104	1,281	1,319	1,406	1,242	1,230	1,218	1,135	1,107	984
Ethnicity not stated	7	9	21	11	13	22	15	18	38	37	104

*Race and Hispanic origin are reported separately on the abortion report. Women of Hispanic origin are included in appropriate race totals.

INDUCED ABORTIONS OCCURRING IN IDAHO
Selected Demographic Characteristics (Percent)
2005-2015

DEMOGRAPHIC CHARACTERISTICS	2005	2006	2007	2008	2009	2010	2011	2012	2013	2014	2015
TOTAL IN IDAHO	1,099	1,249	1,442	1,481	1,650	1,510	1,440	1,458	1,375	1,353	1,272
Age:											
10-14	0.5%	0.6%	0.3%	0.2%	0.4%	0.4%	0.4%	0.2%	0.2%	0.5%	0.2%
15-19	18.9	20.6	20.1	18.5	17.2	16.3	14.4	16.1	12.6	12.9	13.0
15-17	6.6	9.1	6.9	5.4	5.2	5.0	3.8	4.7	3.3	2.9	3.8
18-19	12.3	11.5	13.2	13.1	12.0	11.3	10.6	11.5	9.3	10.1	9.2
20-24	30.0	31.9	32.9	34.5	34.1	33.7	33.0	33.2	35.8	34.1	34.0
25-29	24.3	21.5	22.1	21.4	21.4	22.2	22.9	24.2	24.7	25.1	21.5
30-34	12.6	13.0	12.3	14.2	13.9	16.6	17.5	14.6	12.9	14.9	15.9
35-39	9.7	9.0	8.5	8.0	8.7	8.0	8.0	7.3	9.8	9.2	11.3
40-44	3.7	3.4	3.5	2.8	4.4	2.6	3.7	4.0	3.6	3.1	3.5
45+	0.2	0.1	0.2	0.3	0.1	0.1	0.1	0.3	0.4	0.2	0.6
Not stated	NA	NA	NA	NA	NA	NA	NA	NA	NA	NA	NA
Idaho residence status:											
Resident	96.9%	97.3%	96.4%	97.2%	95.9%	95.0%	95.3%	94.6%	96.1%	94.8%	95.4%
Non-resident	3.1	2.7	3.6	2.8	4.1	5.0	4.7	5.4	3.9	5.2	4.6
Marital status:											
Married	20.0%	20.5%	21.4%	18.2%	19.3%	15.0%	15.7%	13.5%	16.4%	16.8%	18.8%
Not married	80.0	79.5	78.6	81.8	80.7	85.0	84.3	86.5	83.6	83.2	81.2
Not stated	NA	NA	NA	NA	NA	NA	NA	NA	NA	NA	NA
Previous induced abortions:											
None	78.2%	78.6%	76.7%	72.8%	71.2%	69.9%	70.4%	75.1%	74.7%	69.3%	73.4%
1	16.2	16.0	18.9	21.0	21.1	21.9	22.2	18.0	18.5	21.6	19.9
2	4.2	3.9	3.3	4.3	5.4	5.6	5.2	4.9	4.7	6.4	4.6
3+	1.4	1.5	1.2	1.9	2.3	2.6	2.2	2.0	2.1	2.7	2.0
Not stated	NA	NA	NA	NA	NA	NA	NA	NA	NA	NA	NA
Race											
White	93.5%	93.4%	93.3%	92.3%	92.0%	91.4%	92.1%	90.0%	88.2%	89.9%	89.4%
Black	1.5	1.2	1.7	1.0	1.3	1.5	1.2	1.6	1.5	1.7	2.4
American Indian	1.7	2.1	1.2	1.2	1.2	1.7	0.7	0.9	1.6	1.2	0.9
Asian/Pacific Islander	3.2	3.1	3.0	3.3	3.1	3.1	3.1	3.2	2.8	3.2	2.3
Other	0.1	0.2	0.8	2.3	2.4	2.2	2.9	4.3	5.8	4.0	4.9
Race not stated	NA	NA	NA	NA	NA	NA	NA	NA	NA	NA	NA
Ethnicity*											
Hispanic	12.2%	11.0%	9.9%	10.3%	14.1%	16.5%	13.7%	15.4%	15.1%	15.9%	15.8%
Non-Hispanic	87.8	89.0	90.1	89.7	85.9	83.5	86.3	84.6	84.9	84.1	84.2
Ethnicity not stated	NA	NA	NA	NA	NA	NA	NA	NA	NA	NA	NA

* Race and Hispanic origin are reported separately on the abortion report. Women of Hispanic origin are included in appropriate race totals.
 NA - not applicable.

Percent distributions are based on records with known data.

Percentages may not sum to 100 due to rounding.

INDUCED ABORTIONS OCCURRING IN IDAHO
Clinical Estimated Weeks of Gestation and Primary Termination Procedure
2005-2015

PROCEDURE CHARACTERISTICS	2005	2006	2007	2008	2009	2010	2011	2012	2013	2014	2015
TOTAL IN IDAHO	1,099	1,249	1,442	1,481	1,650	1,510	1,440	1,458	1,375	1,353	1,272
Weeks of gestation											
Number ¹											
<9	645	804	926	997	1,056	994	887	978	921	923	832
9-10	303	258	256	275	309	282	300	242	234	238	248
11-12	118	135	187	135	199	163	174	141	144	115	104
13-15	15	37	53	62	65	59	69	86	64	67	80
16-20	13	8	11	8	14	6	6	10	9	6	8
21-24	4	3	5	3	5	5	2	1	3	1	-
25+	1	2	-	-	1	1	-	-	-	-	-
Not stated	-	2	4	1	1	-	2	-	-	3	-
Percent ¹											
<9	58.7%	64.5%	64.4%	67.4%	64.0%	65.8%	61.7%	67.1%	67.0%	68.4%	65.4%
9-10	27.6	20.7	17.8	18.6	18.7	18.7	20.9	16.6	17.0	17.6	19.5
11-12	10.7	10.8	13.0	9.1	12.1	10.8	12.1	9.7	10.5	8.5	8.2
13-15	1.4	3.0	3.7	4.2	3.9	3.9	4.8	5.9	4.7	5.0	6.3
16-20	1.2	0.6	0.8	0.5	0.8	0.4	0.4	0.7	0.7	0.4	0.6
21-24	0.4	0.2	0.3	0.2	0.3	0.3	0.1	0.1	0.2	0.1	-
25+	0.1	0.2	-	-	0.1	0.1	-	-	-	-	-
Not stated	NA	NA	NA	NA	NA	NA	NA	NA	NA	NA	NA
Termination procedure											
Number ²											
Suction curettage	967	1,035	1,129	1,043	1,068	995	932	883	845	778	666
Sharp curettage (D&C)	4	3	2	4	5	2	2	2	3	1	-
Dilation and evacuation (D&E)	3	7	12	7	13	6	4	12	8	24	45
Intra-uterine instillation (saline or prostaglandin)	4	3	2	1	1	1	1	2	2	2	-
Medical (nonsurgical)	117	198	293	423	556	504	499	559	513	547	561
Hysterotomy/Hysterectomy	-	-	-	-	1	-	-	-	-	-	-
Other	4	3	4	3	6	2	2	-	4	1	-
Not stated	-	-	-	-	-	-	-	-	-	-	-
Percent ²											
Suction curettage	88.0%	82.9%	78.3%	70.4%	64.7%	65.9%	64.7%	60.6%	61.5%	57.5%	52.4%
Sharp curettage (D&C)	0.4	0.2	0.1	0.3	0.3	0.1	0.1	0.1	0.2	0.1	-
Dilation and evacuation (D&E)	0.3	0.6	0.8	0.5	0.8	0.4	0.3	0.8	0.6	1.8	3.5
Intra-uterine instillation (saline or prostaglandin)	0.4	0.2	0.1	0.1	0.1	0.1	0.1	0.1	0.1	0.1	-
Medical (nonsurgical)	10.6	15.9	20.3	28.6	33.7	33.4	34.7	38.3	37.3	40.4	44.1
Hysterotomy/Hysterectomy	-	-	-	-	0.1	-	-	-	-	-	-
Other	0.4	0.2	0.3	0.2	0.4	0.1	0.1	-	0.3	0.1	-
Not stated	NA	NA	NA	NA	NA	NA	NA	NA	NA	NA	NA

1. The clinical estimated length of gestation may differ from length of gestation based on the date of last normal menses and date of pregnancy termination. Data based on week's of gestation differ from data based on week's Postfertilization. The Postfertilization age is the age as calculated from the fertilization of the human ovum. Fertilization of the human ovum occurs approximately two weeks after the onset of menses. The clinical estimated length of gestation is approximately two weeks longer than the number of week's Postfertilization.

2. The primary procedure that terminated the pregnancy is shown; there may be additional procedures used for the termination.

NA: not applicable.

INDUCED ABORTIONS OCCURRING IN IDAHO
Age of Patient by Length of Gestation¹
2015

AGE OF PATIENT	TOTAL IN IDAHO	WEEKS OF GESTATION							
		<9	9-10	11-12	13-15	16-20	21-24	25+	Not Stated
TOTAL	1,272	832	248	104	80	8	-	-	-
<15	2	1	-	1	-	-	-	-	-
15-19	165	88	36	26	15	-	-	-	-
15-17	48	22	14	9	3	-	-	-	-
18-19	117	66	22	17	12	-	-	-	-
20-24	433	269	94	35	33	2	-	-	-
25-29	274	200	42	18	13	1	-	-	-
30-34	202	137	42	14	7	2	-	-	-
35-39	144	98	25	8	10	3	-	-	-
40-44	45	36	6	2	1	-	-	-	-
45+	7	3	3	-	1	-	-	-	-
Not stated	-	-	-	-	-	-	-	-	-

1. Length of gestation is based on the clinical estimate of gestation in completed weeks. Data by clinical estimate of gestation may differ from length of gestation based on date last normal menses began and date of pregnancy termination.

INDUCED ABORTIONS OCCURRING IN IDAHO
Age of Patient by Number of Previous Induced Abortions and Live Births
2015

AGE OF PATIENT	TOTAL IN IDAHO	NUMBER OF PREVIOUS ABORTIONS				NUMBER OF PREVIOUS LIVE BIRTHS			
		None	1	2+	Not Stated	None	1	2+	Not Stated
TOTAL	1,272	932	252	85	3	583	291	396	2
<15	2	2	-	-	-	2	-	-	-
15-19	165	151	13	-	1	147	11	7	-
15-17	48	46	2	-	-	46	2	-	-
18-19	117	105	11	-	1	101	9	7	-
20-24	433	347	70	16	-	243	115	75	-
25-29	274	185	63	26	-	109	79	86	-
30-34	202	120	55	26	1	46	38	117	1
35-39	144	93	39	11	1	30	34	79	1
40-44	45	29	11	5	-	6	13	26	-
45+	7	5	1	1	-	-	1	6	-
Not stated	-	-	-	-	-	-	-	-	-

INDUCED ABORTIONS OCCURRING IN IDAHO
Primary Termination Procedure¹ by Length of Gestation²
2015

TERMINATION PROCEDURE ¹	TOTAL IN IDAHO	WEEKS OF GESTATION							
		<9	9-10	11-12	13-15	16-20	21-24	25+	Not Stated
TOTAL IN IDAHO	1,272	832	248	104	80	8	-	-	-
Suction curettage	666	335	185	99	46	1	-	-	-
Sharp curettage	-	-	-	-	-	-	-	-	-
Dilation and evacuation (D&E)	45	-	-	5	34	6	-	-	-
Intra-uterine saline/ prostaglandin instillation	-	-	-	-	-	-	-	-	-
Hysterotomy/hysterectomy	-	-	-	-	-	-	-	-	-
Medical (non-surgical)	561	497	63	-	-	1	-	-	-
Other	-	-	-	-	-	-	-	-	-
Not stated	-	-	-	-	-	-	-	-	-

1. Primary termination procedure reported; there may be more than one procedure reported.
2. Length of gestation is based on the clinical estimate of gestation in completed weeks. Data by clinical estimate of gestation may differ from length of gestation based on date last normal menses began and date of pregnancy termination.

INDUCED ABORTIONS OCCURRING IN IDAHO
Primary Termination Procedure by Reported Complications
2015

TERMINATION PROCEDURE ¹	TOTAL IN IDAHO	REPORTED COMPLICATIONS ²						
		No Complications	Hemorrhage	Infection	Uterine Perforation	Cervical Laceration	Retained Products	Other
TOTAL IN IDAHO	1,272	1,269	1	-	-	1	2	1
Suction curettage	666	665	-	-	-	1	-	-
Sharp curettage	-	-	-	-	-	-	-	-
Dilation and evacuation (D&E)	45	45	-	-	-	-	-	-
Intra-uterine saline / prostaglandin instillation	-	-	-	-	-	-	-	-
Hysterotomy/hysterectomy	-	-	-	-	-	-	-	-
Medical (non-surgical)	561	559	1	-	-	-	2	1
Other	-	-	-	-	-	-	-	-
Not stated	-	-	-	-	-	-	-	-

1. Primary termination procedure reported; there may be more than one procedure reported.
2. One or more complications may be reported per termination procedure; therefore, the number of reported complications plus no complications may sum to more than total number of procedures.

INDUCED ABORTIONS OCCURRING IN IDAHO
Age of Patient by Marital Status
2015

AGE OF PATIENT	TOTAL IN IDAHO	MARITAL STATUS		
		Married	Not Married	Not Stated
TOTAL	1,272	231	997	44
<15	2	-	2	-
15-19	165	3	152	10
15-17	48	1	45	2
18-19	117	2	107	8
20-24	433	35	382	16
25-29	274	51	212	11
30-34	202	55	142	5
35-39	144	66	76	2
40-44	45	16	29	-
45+	7	5	2	-
Not stated	-	-	-	-

INDUCED ABORTIONS OCCURRING IN IDAHO
Number of Previous Induced Abortions and Living Children
Percentage of Abortions
By Number of Previous Induced Abortions or Living Children
2015

	PREVIOUS INDUCED ABORTIONS		LIVING CHILDREN	
	Number	Percent	Number	Percent
TOTAL	1,272	100.0%	1,272	100.0%
None	932	73.4%	583	45.9%
1	252	19.9	291	22.9
2	59	4.6	221	17.4
3+	26	2.0	175	13.8
Not stated	3	NA	2	NA

Percentages are based on records with stated number of previous induced abortions or number of living children.

INDUCED ABORTIONS OCCURRING IN IDAHO
Patient Educational Materials Provided
2006-2015

YEAR	WERE PATIENT EDUCATIONAL MATERIALS PROVIDED?			
	Yes	No	Unknown	Total
2006	1,239	1	9	1,249
2007	1,442	-	-	1,442
2008	1,481	-	-	1,481
2009	1,650	-	-	1,650
2010	1,509	1	-	1,510
2011	1,440	-	-	1,440
2012	1,458	-	-	1,458
2013	1,375	-	-	1,375
2014	1,351	-	2	1,353
2015	1,271	1	-	1,272

Note: prior to July 1, 2006, any educational material may have been provided to patient. Starting July 1, 2006, educational materials from the Idaho Department of Health and Welfare must be provided to patient by law. It is possible to have reports of procedures with unknown or no patient educational materials provided in rare cases of medical emergencies.

INDUCED ABORTIONS OCCURRING IN IDAHO
Informed Consent*, Aged Under 18
2015

Total Abortions Aged <18	50
TERMINATION PERFORMED FOLLOWING:	
Written informed consent of a parent, guardian, or conservator and the minor	42
Written informed consent of emancipated minor for herself	-
Written informed consent of minor for herself pursuant to court order granting minor right to self-consent	6
Written informed consent of court pursuant to order stating abortion in best interest of minor, despite absence of parental consent	2
Certification from minor that pregnancy resulted from rape or sexual conduct with minor by minor's parent, stepparent, uncle, grandparent, sibling, adoptive parent, legal guardian, or foster parent	-
Medical emergency	-
Unknown	-

* Informed Consent for females under age 18 was required by legislation to be collected beginning 3/27/2007.

INDUCED ABORTIONS TO IDAHO RESIDENTS
Number by District and County of Residence
2005-2015

RESIDENCE	2005	2006	2007	2008	2009	2010	2011	2012	2013	2014	2015
TOTAL	1,827	1,919	2,160	2,132	2,348	2,123	2,005	1,916	1,794	1,751	1,686
District 1	423	371	364	365	346	333	268	264	229	242	252
District 2	161	158	170	133	138	126	160	90	102	109	106
District 3	192	265	294	324	408	326	312	319	305	276	270
District 4	744	840	909	921	894	851	794	794	718	692	689
District 5	150	142	200	196	273	226	222	230	218	254	188
District 6	91	78	132	105	164	152	153	132	128	98	101
District 7	66	65	91	88	125	109	96	87	94	80	80
Ada	703	775	840	862	837	786	735	729	668	649	640
Adams	2	5	1	4	7	-	2	3	4	2	5
Bannock	58	57	97	74	120	111	88	84	81	63	72
Bear Lake	-	3	-	1	1	3	2	1	3	-	-
Benewah	12	8	15	15	17	11	12	4	6	4	5
Bingham	21	10	23	18	30	25	46	33	31	22	15
Blaine	54	41	46	43	47	39	42	41	34	56	33
Boise	3	8	3	7	7	9	8	2	8	8	5
Bonner	62	59	64	59	35	55	38	40	33	29	32
Bonneville	40	38	62	59	88	75	65	60	68	59	58
Boundary	14	8	7	6	13	7	6	5	8	5	5
Butte	1	-	1	-	1	-	1	1	1	3	1
Camas	-	1	-	-	1	-	2	-	1	-	1
Canyon	161	214	248	267	336	264	271	264	253	234	217
Caribou	1	-	3	4	4	3	3	1	3	1	3
Cassia	9	9	11	14	17	18	17	14	16	23	10
Clark	1	-	1	-	-	-	-	-	-	-	-
Clearwater	8	2	5	7	7	4	7	3	6	5	7
Custer	3	1	2	4	6	3	1	2	5	2	4
Elmore	25	31	46	34	37	43	39	45	31	25	35
Franklin	5	3	2	3	3	4	1	6	4	3	2
Fremont	5	3	4	4	5	1	5	2	5	4	2
Gem	9	15	11	18	14	13	9	13	12	9	15
Gooding	5	10	18	19	31	23	13	8	10	12	9
Idaho	5	6	9	10	8	8	8	6	4	5	6
Jefferson	4	5	4	3	9	12	8	6	9	7	3
Jerome	14	14	18	21	27	15	26	24	21	28	21
Kootenai	313	277	265	266	262	248	192	195	163	184	197
Latah	79	66	76	59	56	59	64	43	57	54	50
Lemhi	6	11	9	9	5	5	5	11	2	3	2
Lewis	4	7	6	5	4	2	3	1	-	2	4
Lincoln	4	4	5	3	2	6	4	8	2	4	4
Madison	3	2	2	3	5	3	6	5	5	2	6
Minidoka	6	5	15	9	14	20	13	21	24	15	7
Nez Perce	65	77	74	52	63	53	78	37	35	43	39
Oneida	1	1	2	-	1	1	2	2	1	1	-
Owyhee	7	3	6	10	10	12	7	7	4	8	3
Payette	10	22	24	18	28	31	18	26	22	20	24
Power	4	4	4	5	4	5	10	4	4	5	8
Shoshone	22	19	13	19	19	12	20	20	19	20	13
Teton	4	5	7	6	7	10	6	1	-	3	5
Twin Falls	58	58	87	87	134	105	105	114	110	116	103
Valley	13	26	20	18	13	13	12	18	11	10	9
Washington	3	6	4	7	13	6	5	6	10	3	6

INDUCED ABORTIONS TO IDAHO RESIDENTS
Abortion Rate by District and County of Residence
2005-2015

RESIDENCE	2005	2006	2007	2008	2009	2010	2011	2012	2013	2014	2015
TOTAL	6.1	6.4	7.2	7.1	7.7	6.9	6.5	6.2	5.8	5.6	5.3
District 1	10.8	9.4	9.3	9.2	9.0	8.9	7.2	7.0	6.1	6.4	6.6
District 2	7.8	8.1	8.5	6.9	6.7	6.3	7.9	4.4	5.0	5.4	5.2
District 3	4.0	5.3	5.9	6.5	8.3	6.6	6.3	6.4	6.0	5.3	5.1
District 4	8.9	9.9	10.5	10.6	9.9	9.6	8.9	8.7	7.8	7.4	7.3
District 5	4.5	4.3	6.2	6.1	8.4	6.6	6.5	6.7	6.3	7.2	5.3
District 6	2.7	2.4	4.0	3.2	4.9	4.6	4.6	4.0	3.9	3.0	3.1
District 7	1.7	1.7	2.3	2.1	2.9	2.5	2.2	2.0	2.2	1.8	1.8
Ada	9.4	10.2	10.8	11.0	10.3	9.7	9.0	8.7	7.9	7.6	7.3
Adams	3.3	8.8	1.7	7.2	13.8	-	3.8	6.0	8.2	4.1	10.5
Bannock	3.3	3.4	5.7	4.4	6.6	6.4	4.9	4.7	4.6	3.6	4.1
Bear Lake	-	2.8	-	1.0	1.1	3.2	2.1	1.0	3.1	-	-
Benewah	7.6	5.0	9.7	9.8	12.0	7.7	8.8	2.9	4.5	3.0	3.7
Bingham	2.3	1.1	2.7	2.1	3.7	2.9	5.3	3.9	3.7	2.6	1.8
Blaine	13.4	10.5	12.3	11.6	12.2	10.5	11.5	11.5	9.6	15.5	9.3
Boise	2.2	5.7	2.2	5.3	5.9	9.8	8.6	2.2	8.9	8.8	5.1
Bonner	8.3	7.9	8.9	8.2	5.2	8.8	6.1	6.5	5.3	4.6	5.1
Bonneville	2.1	2.0	3.2	3.0	4.4	3.7	3.2	2.9	3.2	2.8	2.7
Boundary	7.3	4.2	3.7	3.2	7.6	4.1	3.6	3.0	4.8	2.9	2.8
Butte	2.2	-	2.3	-	2.6	-	2.4	2.5	2.6	7.4	2.5
Camas	-	4.3	-	-	4.6	-	10.8	-	6.0	-	5.9
Canyon	4.4	5.6	6.5	6.9	8.8	6.8	7.0	6.7	6.3	5.7	5.2
Caribou	0.8	-	2.5	3.4	3.5	2.7	2.7	0.9	2.7	0.9	2.7
Cassia	2.2	2.3	2.9	3.7	4.6	4.3	4.1	3.4	3.8	5.4	2.3
Clark	5.6	-	5.8	-	-	-	-	-	-	-	-
Clearwater	6.6	1.7	4.4	6.5	7.4	3.6	6.6	2.9	5.9	5.1	7.0
Custer	4.5	1.5	3.1	6.2	9.9	4.9	1.7	3.3	8.2	3.4	7.1
Elmore	4.4	5.8	8.4	6.3	5.8	7.7	7.2	8.4	5.9	4.8	6.9
Franklin	2.0	1.2	0.9	1.3	1.3	1.7	0.4	2.6	1.7	1.3	0.8
Fremont	2.3	1.4	1.8	1.8	2.3	0.4	2.2	0.9	2.2	1.8	0.9
Gem	2.8	4.7	3.6	6.0	5.2	4.8	3.4	5.0	4.6	3.5	5.8
Gooding	2.0	4.1	7.4	7.8	13.3	8.5	4.9	3.1	3.9	4.6	3.4
Idaho	2.0	2.5	3.9	4.4	4.0	3.7	3.7	2.8	1.9	2.4	2.9
Jefferson	0.9	1.1	0.9	0.6	2.0	2.4	1.6	1.2	1.8	1.4	0.6
Jerome	3.7	3.7	4.9	5.7	7.1	3.5	6.1	5.7	5.0	6.6	5.0
Kootenai	12.0	10.5	10.0	9.9	9.9	9.6	7.4	7.4	6.2	6.9	7.2
Latah	8.9	8.0	8.8	7.0	5.8	6.5	6.9	4.6	6.1	5.8	5.3
Lemhi	4.4	8.2	7.1	7.0	4.5	4.7	4.7	10.8	2.0	3.0	1.9
Lewis	6.8	12.0	11.2	9.1	7.5	3.9	5.7	1.9	-	3.9	7.7
Lincoln	4.3	4.3	5.8	3.5	2.4	6.2	4.2	8.2	2.0	4.0	3.9
Madison	0.3	0.2	0.2	0.3	0.4	0.3	0.5	0.4	0.5	0.2	0.5
Minidoka	1.7	1.4	4.6	2.7	4.3	5.8	3.7	6.0	6.7	4.2	1.9
Nez Perce	8.7	10.9	10.2	7.3	8.4	7.4	10.9	5.1	4.8	5.9	5.4
Oneida	1.3	1.3	2.8	-	1.5	1.5	3.1	3.1	1.5	1.5	-
Owyhee	3.5	1.5	3.2	5.4	5.7	6.0	3.5	3.5	2.0	4.1	1.5
Payette	2.3	5.0	5.6	4.2	6.7	7.5	4.4	6.4	5.5	5.0	6.0
Power	2.5	2.5	2.7	3.4	2.7	3.6	7.4	2.9	3.0	3.8	6.1
Shoshone	10.2	8.8	6.3	9.4	9.8	6.1	10.2	10.1	9.6	10.6	7.0
Teton	2.7	3.2	4.2	3.4	3.5	4.6	2.9	0.5	-	1.5	2.4
Twin Falls	4.2	4.1	6.1	6.1	9.2	7.1	7.0	7.5	7.1	7.4	6.4
Valley	9.4	17.1	13.3	12.3	9.3	8.9	8.5	12.7	7.9	7.1	6.2
Washington	1.7	3.5	2.3	4.0	8.4	3.8	3.2	3.8	6.5	1.9	4.0

Abortion rate: Number of induced abortions to women of all ages per 1,000 females 15-44 years of age. Some rates are based on small numbers (<20), and caution is advised when interpreting rates based on small numbers.

INDUCED ABORTIONS TO IDAHO RESIDENTS
District and County of Residence by State of Occurrence
2015

RESIDENCE	ABORTIONS OCCURRING TO IDAHO RESIDENTS		
	Total	Abortion Occurring in Idaho	Abortion Occurring in Other State
IDAHO	1,686	1,213	473
District 1	252	2	250
District 2	106	4	102
District 3	270	265	5
District 4	689	671	18
District 5	188	178	10
District 6	101	50	51
District 7	80	43	37
Ada	640	622	18
Adams	5	5	-
Bannock	72	37	35
Bear Lake	-	-	-
Benewah	5	-	5
Bingham	15	6	9
Blaine	33	32	1
Boise	5	5	-
Bonner	32	-	32
Bonneville	58	34	24
Boundary	5	-	5
Butte	1	1	-
Camas	1	1	-
Canyon	217	213	4
Caribou	3	-	3
Cassia	10	10	-
Clark	-	-	-
Clearwater	7	-	7
Custer	4	3	1
Elmore	35	35	-
Franklin	2	-	2
Fremont	2	1	1
Gem	15	15	-
Gooding	9	9	-
Idaho	6	3	3
Jefferson	3	-	3
Jerome	21	19	2
Kootenai	197	2	195
Latah	50	1	49
Lemhi	2	-	2
Lewis	4	-	4
Lincoln	4	4	-
Madison	6	3	3
Minidoka	7	7	-
Nez Perce	39	-	39
Oneida	-	-	-
Owyhee	3	3	-
Payette	24	23	1
Power	8	6	2
Shoshone	13	-	13
Teton	5	2	3
Twin Falls	103	96	7
Valley	9	9	-
Washington	6	6	-

INDUCED ABORTIONS TO IDAHO RESIDENTS
Rates by District and County of Residence
Age of Patient
2015

RESIDENCE	TOTAL		AGE OF PATIENT									
	Number	Rate ¹	<15	15-19			20-24	25-29	30-34	35-39	40-44	45+
				Total	15-17	18-19						
IDAHO	1,686*	5.3	4	215	71	144	567	387	260	185	58	9
District 1	252	6.6	1	38	14	24	83	60	29	28	10	3
District 2	106*	5.2	1	15	6	9	30	27	19	11	2	-
District 3	270	5.1	1	38	15	23	94	56	43	27	10	1
District 4	689	7.3	1	75	22	53	233	155	116	77	28	4
District 5	188	5.3	-	31	10	21	57	40	33	21	5	1
District 6	101	3.1	-	10	1	9	35	32	9	13	2	-
District 7	80	1.8	-	8	3	5	35	17	11	8	1	-
Ada	640	7.3	1	68	20	48	212	145	113	72	25	4
Adams	5	10.5	-	-	-	-	2	-	2	1	-	-
Bannock	72	4.1	-	7	-	7	21	27	6	10	1	-
Bear Lake	-	-	-	-	-	-	-	-	-	-	-	-
Benewah	5	3.7	-	2	-	2	-	2	-	1	-	-
Bingham	15	1.8	-	1	1	-	8	2	2	2	-	-
Blaine	33	9.3	-	4	1	3	6	10	5	6	2	-
Boise	5	5.1	-	1	-	1	3	-	-	1	-	-
Bonner	32	5.1	-	5	2	3	10	8	2	6	1	-
Bonneville	58	2.7	-	4	1	3	26	13	9	6	-	-
Boundary	5	2.8	1	1	1	-	1	1	-	1	-	-
Butte	1	2.5	-	-	-	-	1	-	-	-	-	-
Camas	1	5.9	-	-	-	-	1	-	-	-	-	-
Canyon	217	5.2	1	30	14	16	78	45	33	21	9	-
Caribou	3	2.7	-	-	-	-	1	-	-	1	1	-
Cassia	10	2.3	-	2	-	2	2	2	4	-	-	-
Clark	-	-	-	-	-	-	-	-	-	-	-	-
Clearwater	7	7.0	-	2	-	2	1	2	1	1	-	-
Custer	4	7.1	-	2	1	1	-	1	1	-	-	-
Elmore	35	6.9	-	5	2	3	14	9	2	2	3	-
Franklin	2	0.8	-	1	-	1	-	1	-	-	-	-
Fremont	2	0.9	-	-	-	-	1	-	1	-	-	-
Gem	15	5.8	-	3	-	3	4	5	1	1	1	-
Gooding	9	3.4	-	-	-	-	4	2	2	1	-	-
Idaho	6	2.9	-	1	-	1	-	3	1	1	-	-
Jefferson	3	0.6	-	-	-	-	2	-	-	1	-	-
Jerome	21	5.0	-	4	3	1	5	2	8	1	1	-
Kootenai	197	7.2	-	28	10	18	68	46	26	17	9	3
Latah	50	5.3	-	9	3	6	18	10	7	5	1	-
Lemhi	2	1.9	-	-	-	-	2	-	-	-	-	-
Lewis	4	7.7	-	-	-	-	1	1	-	2	-	-
Lincoln	4	3.9	-	-	-	-	2	-	-	1	1	-
Madison	6	0.5	-	2	1	1	2	-	-	1	1	-
Minidoka	7	1.9	-	1	1	-	2	1	1	2	-	-
Nez Perce	39*	5.4	1	3	3	-	10	11	10	2	1	-
Oneida	-	-	-	-	-	-	-	-	-	-	-	-
Owyhee	3	1.5	-	1	-	1	1	-	1	-	-	-
Payette	24	6.0	-	4	1	3	7	5	3	4	-	1
Power	8	6.1	-	1	-	1	4	2	1	-	-	-
Shoshone	13	7.0	-	2	1	1	4	3	1	3	-	-
Teton	5	2.4	-	-	-	-	2	3	-	-	-	-
Twin Falls	103	6.4	-	20	5	15	35	23	13	10	1	1
Valley	9	6.2	-	1	-	1	4	1	1	2	-	-
Washington	6	4.0	-	-	-	-	2	1	3	-	-	-

* Total includes one record with age not stated: Nez Perce County (District 2).
1. Abortion rate: Number of induced abortions per 1,000 women 15-44 years of age.

INDUCED ABORTIONS TO IDAHO RESIDENTS
Ratios and Race/Ethnicity of Patient by District and County of Residence
2015

RESIDENCE	TOTAL ABORTIONS		RACE						ETHNICITY ²		
	Number	Ratio ¹	White	Black	American Indian	Asian/Pacific Islander	Other Race	Race Not Stated	Non-Hispanic	Hispanic	Ethnicity Not Stated
IDAHO	1,686	73.8	1,400	34	24	37	63	128	1,383	188	115
District 1	252	95.0	239	2	3	1	-	7	244	1	7
District 2	106	87.0	89	4	7	4	-	2	103	-	3
District 3	270	68.1	198	4	-	-	29	39	180	65	25
District 4	689	121.3	565	21	4	21	20	58	551	66	72
District 5	188	67.7	164	2	1	7	6	8	147	38	3
District 6	101	39.5	76	1	8	2	5	9	88	10	3
District 7	80	20.1	69	-	1	2	3	5	70	8	2
Ada	640	125.0	530	18	4	18	18	52	518	61	61
Adams	5	192.3	4	-	-	-	-	1	4	1	-
Bannock	72	57.2	57	1	3	2	3	6	65	4	3
Bear Lake	-	-	-	-	-	-	-	-	-	-	-
Benewah	5	43.5	4	-	-	-	-	1	4	-	1
Bingham	15	20.4	9	-	4	-	-	2	12	3	-
Blaine	33	139.2	32	-	-	-	-	1	27	4	2
Boise	5	122.0	3	1	-	-	1	-	3	-	2
Bonner	32	84.7	32	-	-	-	-	-	32	-	-
Bonneville	58	29.5	49	-	1	-	3	5	49	7	2
Boundary	5	35.0	5	-	-	-	-	-	5	-	-
Butte	1	37.0	1	-	-	-	-	-	1	-	-
Camas	1	90.9	1	-	-	-	-	-	1	-	-
Canyon	217	68.4	154	4	-	-	27	32	142	55	20
Caribou	3	34.9	1	-	-	-	2	-	2	1	-
Cassia	10	29.0	7	-	-	1	1	1	5	5	-
Clark	-	-	-	-	-	-	-	-	-	-	-
Clearwater	7	125.0	7	-	-	-	-	-	6	-	1
Custer	4	114.3	4	-	-	-	-	-	4	-	-
Elmore	35	81.0	25	2	-	2	1	5	23	4	8
Franklin	2	10.1	2	-	-	-	-	-	1	1	-
Fremont	2	11.5	2	-	-	-	-	-	2	-	-
Gem	15	69.8	14	-	-	-	-	1	10	2	3
Gooding	9	44.6	8	-	-	-	-	1	6	3	-
Idaho	6	35.7	5	-	1	-	-	-	6	-	-
Jefferson	3	6.2	3	-	-	-	-	-	3	-	-
Jerome	21	49.8	21	-	-	-	-	-	14	7	-
Kootenai	197	106.1	186	2	3	1	-	5	192	1	4
Latah	50	107.3	43	2	-	3	-	2	49	-	1
Lemhi	2	22.7	2	-	-	-	-	-	2	-	-
Lewis	4	87.0	2	-	2	-	-	-	4	-	-
Lincoln	4	46.5	4	-	-	-	-	-	4	-	-
Madison	6	5.7	4	-	-	2	-	-	6	-	-
Minidoka	7	23.0	7	-	-	-	-	-	5	2	-
Nez Perce	39	80.7	32	2	4	1	-	-	38	-	1
Oneida	-	-	-	-	-	-	-	-	-	-	-
Owyhee	3	20.7	2	-	-	-	-	1	3	-	-
Payette	24	82.2	18	-	-	-	2	4	16	7	1
Power	8	61.5	6	-	1	-	-	1	7	1	-
Shoshone	13	81.3	12	-	-	-	-	1	11	-	2
Teton	5	30.1	5	-	-	-	-	-	4	1	-
Twin Falls	103	88.0	84	2	1	6	5	5	85	17	1
Valley	9	102.3	7	-	-	1	-	1	7	1	1
Washington	6	53.1	6	-	-	-	-	-	5	-	1

1. Induced abortion ratio: Number of induced abortions per 1,000 live births.

2. Race and ethnicity are reported separately on the abortion report; women of Hispanic origin are included in appropriate race totals.

INDUCED ABORTIONS TO IDAHO RESIDENTS
Age, Abortion Rate, and Abortion Ratio
2005-2015

AGE	2005	2006	2007	2008	2009	2010	2011	2012	2013	2014	2015
TOTAL IDAHO RESIDENT	1,827	1,919	2,160	2,132	2,348	2,123	2,005	1,916	1,794	1,751	1,686
Age:											
10-14	9	12	8	6	8	13	6	8	4	7	4
15-19	356	380	430	395	409	344	328	314	224	233	215
15-17	127	159	155	127	136	113	97	102	62	56	71
18-19	229	221	275	268	273	231	231	212	162	177	144
20-24	579	632	732	733	786	722	649	621	620	572	567
25-29	412	427	470	453	517	470	450	457	445	439	387
30-34	219	228	272	297	308	333	331	290	245	270	260
35-39	177	173	167	174	216	175	159	139	179	159	185
40-44	68	60	72	63	91	61	76	74	66	62	58
45+	5	2	6	7	9	4	3	7	7	7	9
Not stated	2	5	3	4	4	1	3	6	4	2	1
Abortion rate per 1,000 females in age group											
Total ¹	6.1	6.4	7.2	7.1	7.7	6.9	6.5	6.2	5.8	5.6	5.3
Age ² :											
10-14	0.2	0.2	0.2	0.1	0.1	0.2	0.1	0.1	0.1	0.1	0.1
15-19	6.7	7.0	7.9	7.2	7.2	6.1	5.7	5.7	4.0	4.2	3.8
15-17	4.0	4.8	4.7	3.9	4.2	3.4	2.9	3.0	1.8	1.6	2.0
18-19	10.6	10.3	12.7	12.1	11.3	10.0	9.8	9.7	7.5	8.2	6.5
20-24	10.2	12.7	15.1	15.1	14.6	13.5	12.0	11.2	11.4	10.7	10.7
25-29	8.7	8.0	8.7	8.2	9.5	9.1	8.7	8.9	8.6	8.2	7.1
30-34	4.9	5.0	5.8	6.2	6.4	6.7	6.4	5.6	4.6	5.1	4.9
35-39	3.9	3.7	3.5	3.6	4.6	3.7	3.4	2.9	3.7	3.2	3.6
40-44	1.3	1.2	1.5	1.3	2.0	1.3	1.6	1.5	1.4	1.3	1.2
45+	0.1	-	0.1	0.1	0.2	0.1	0.1	0.1	0.1	0.1	0.2
Not stated	NA	NA	NA	NA	NA	NA	NA	NA	NA	NA	NA
Abortion ratio per 1,000 live births in age group											
Total ³	79.2	79.3	86.3	84.8	99.0	91.5	89.9	83.5	80.3	76.5	73.8
Age:											
10-14	473.7	666.7	470.6	333.3	533.3	1,000.0	400.0	888.9	363.6	1,000.0	363.6
15-19	176.3	176.9	190.3	174.6	201.4	184.5	207.1	200.4	157.1	179.0	167.3
15-17	238.7	266.3	246.8	195.1	248.2	223.8	251.9	260.9	199.4	180.1	237.5
18-19	154.0	142.5	168.5	166.4	184.1	170.0	192.7	180.3	145.3	178.6	146.0
20-24	80.6	84.1	97.0	100.6	116.1	114.0	106.2	99.1	105.9	93.1	98.9
25-29	57.7	55.7	59.5	55.6	68.7	62.1	63.0	62.5	61.1	60.8	52.8
30-34	49.9	50.3	57.2	59.9	61.9	65.9	64.9	54.6	47.2	49.3	46.5
35-39	94.1	89.4	80.1	84.6	109.4	90.3	82.9	69.4	84.8	70.3	77.9
40-44	167.1	172.9	168.6	166.2	230.4	151.7	180.1	167.0	153.1	139.6	125.8
45+	178.6	100.0	272.7	166.7	272.7	111.1	150.0	259.3	184.2	259.3	272.7
Not stated	NA	NA	NA	NA	NA	NA	NA	NA	NA	NA	NA

1. Total abortion rate: Number of induced abortions to women of all ages per 1,000 females 15-44 years of age.

Rates for 2005-2009, and 2011-2015 are based on July 1, 2005-July 1, 2015 population estimates from the U.S. Census Bureau and NCHS, Internet release dates Aug. 2006, Aug. 2007, Sept. 2008, Sept. 2009, July 2010, July 2012, June 2013, June 2014, June 2015, and June 2016.

Rates for April 1, 2010 are based on Census data, Internet released May 12, 2011.

2. Rate for 45+ age group is based on the population of women 45-49 years of age.

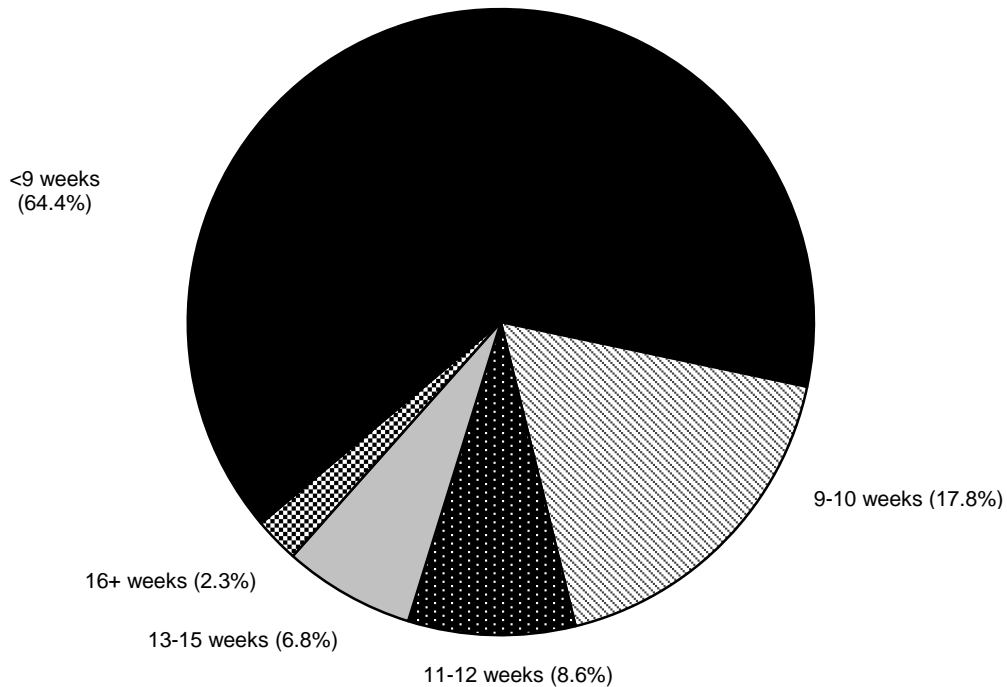
3. Total abortion ratio: Number of induced abortions per 1,000 live births.

NA - not applicable.

INDUCED ABORTIONS TO IDAHO RESIDENTS
Primary Termination Procedure by Clinical Estimated Length of Gestation*
2015

TERMINATION PROCEDURE	TOTAL	WEEKS OF GESTATION							Not Stated
		<9	9-10	11-12	13-15	16-20	21-24	25+	
TOTAL RESIDENTS OF IDAHO	1,686	1,083	300	145	114	25	14	-	5
Suction curettage	888	461	226	140	57	1	-	-	3
Medical (nonsurgical)	699	622	73	-	-	1	1	-	2
Dilation and evacuation (D&E)	99	-	1	5	57	23	13	-	-
Intra-uterine instillation (saline / prostaglandin)	-	-	-	-	-	-	-	-	-
Sharp curettage (D&C)	-	-	-	-	-	-	-	-	-
Hysterotomy / Hysterectomy	-	-	-	-	-	-	-	-	-
Other	-	-	-	-	-	-	-	-	-
Not stated	-	-	-	-	-	-	-	-	-

INDUCED ABORTIONS TO IDAHO RESIDENTS
Clinical Estimated Length of Gestation
2015



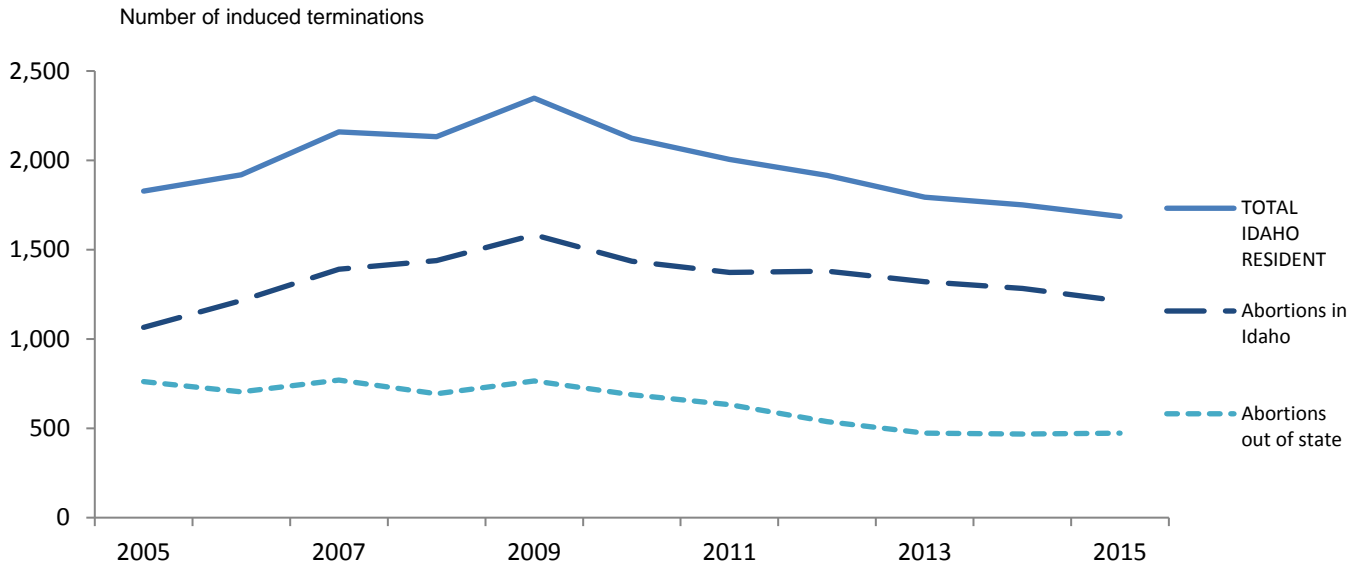
Percentages are based on records with known data for length of gestation.

* The clinical estimated length of gestation may differ from length of gestation based on the date of last normal menses and date of pregnancy termination. The primary procedure that terminated the pregnancy is shown; there may be additional procedures used for the termination.

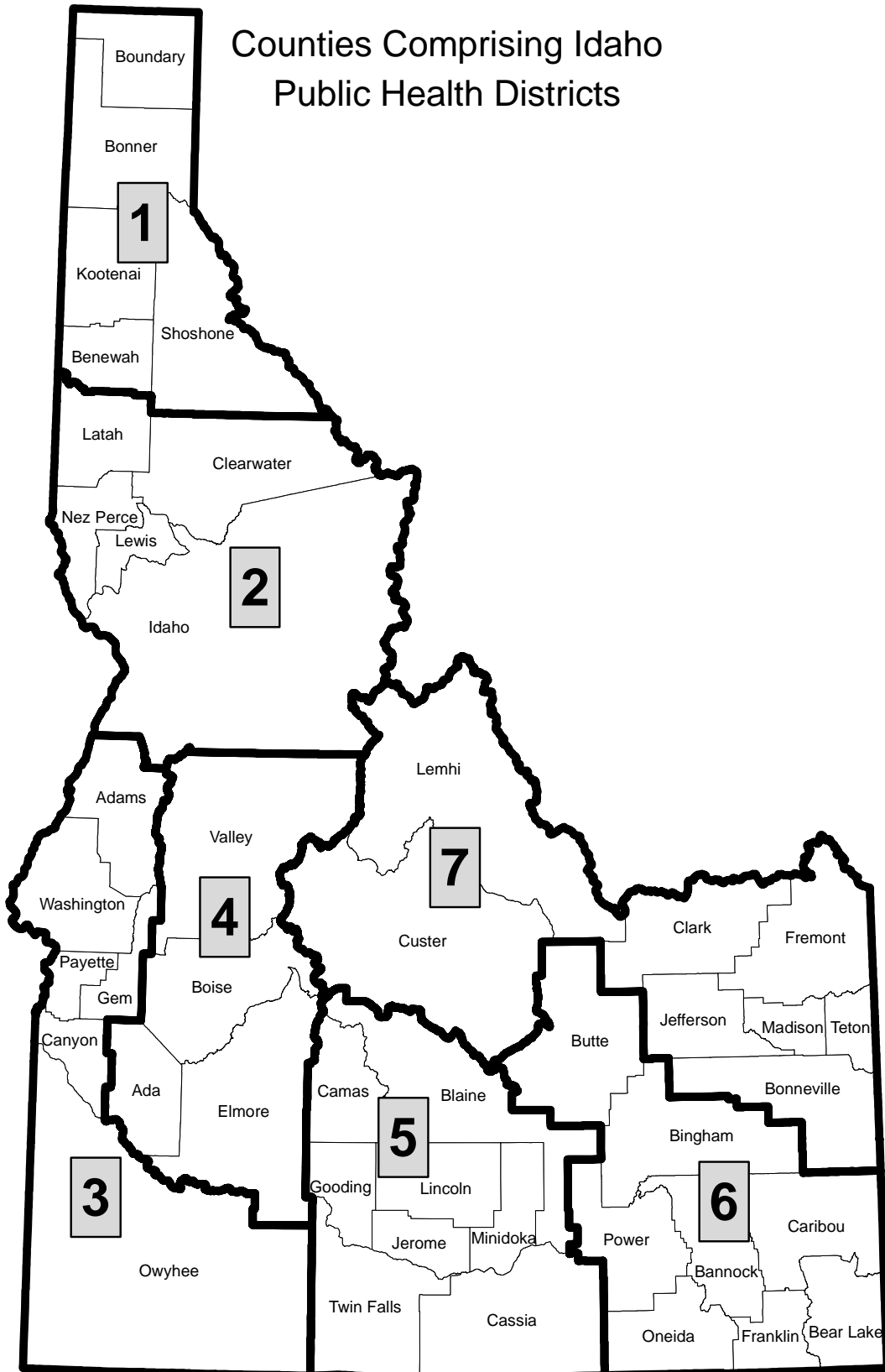
INDUCED ABORTIONS TO IDAHO RESIDENTS
State of Occurrence
2005-2015

STATE OF OCCURRENCE	2005	2006	2007	2008	2009	2010	2011	2012	2013	2014	2015
TOTAL IDAHO RESIDENT	1,827	1,919	2,160	2,132	2,348	2,123	2,005	1,916	1,794	1,751	1,686
Abortions in Idaho	1,065	1,215	1,390	1,439	1,583	1,435	1,372	1,379	1,321	1,283	1,213
Abortions out of state	762	704	770	693	765	688	633	537	473	468	473
Montana	20	19	30	39	61	59	36	48	28	18	21
Oregon	45	59	33	27	35	31	30	18	21	14	12
Utah	104	96	181	134	202	160	156	108	92	79	86
Washington	591	528	525	490	466	438	410	362	332	356	354
All other	2	2	1	3	1	-	1	1	-	1	-

INDUCED ABORTIONS TO IDAHO RESIDENTS
State of Occurrence
2005-2015



Counties Comprising Idaho Public Health Districts



District 1	District 2	District 3	District 4	District 5	District 6	District 7
Benewah	Clearwater	Adams	Ada	Blaine	Bannock	Bonneville
Bonner	Idaho	Canyon	Boise	Camas	Bear Lake	Clark
Boundary	Latah	Gem	Elmore	Cassia	Bingham	Custer
Kootenai	Lewis	Owyhee	Valley	Gooding	Butte	Fremont
Shoshone	Nez Perce	Payette		Jerome	Caribou	Jefferson
		Washington		Lincoln	Franklin	Lemhi
				Minidoka	Oneida	Madison
				Twin Falls	Power	Teton

TECHNICAL NOTES

Induced Abortion

Termination Procedure

The primary procedure that terminated this pregnancy.

Suction Curettage

(Also known as vacuum aspiration)-In this procedure the cervical canal is dilated by the successive insertion of instruments of increasing diameter (dilators). When the cervix is sufficiently dilated, a flexible tube (cannula) is inserted into the uterine cavity, and the fetal and placental tissues are then removed using an electric vacuum pump.

Medical (Nonsurgical)

This nonsurgical procedure involves the administration of a medication or medications to induce an abortion. Medications (e.g. methotrexate, mifepristone, misoprostol, etc.) are used most frequently early in the first trimester of pregnancy. However, some medications (e.g. prostaglandin suppositories, injectable prostaglandins, etc.) may be administered during the second trimester of pregnancy to induce abortion. Medications may be administered orally, by injection, or intravaginally.

Dilation and Evacuation (D&E)

This procedure, used most frequently in the second trimester of pregnancy (greater than or equal to 13 weeks' gestation) involves opening the cervix (dilation) and primarily using sharp instrument techniques, but also suction and other instrumentation such as forceps for evacuation.

Intrauterine Instillation (Saline or Prostaglandin)

This procedure involves either withdrawing a portion of the amniotic fluid from the uterine cavity by a needle inserted through the abdominal wall and replacing this fluid with a concentrated salt solution (known as saline instillation, saline abortion, or saline amniotic fluid exchange) or injecting a prostaglandin – a substance with hormone-like activity- into the uterine cavity through a needle inserted through the abdominal wall (known as intrauterine prostaglandin instillation). The saline instillation process induces labor, which results in the expulsion of the fetus approximately 24 to 48 hours later. The interval between prostaglandin injection and expulsion tends to be shorter than in a saline abortion.

Sharp Curettage (D&C)

(Also known as dilation and curettage, D&C, or surgical curettage)-This procedure involves the dilation of the cervix as in the section curettage procedure, although usually to a larger diameter. The fetal and placental tissues are then removed with a sharp curette.

Hysterotomy/Hysterectomy

Hysterotomy involves surgical entry into the uterus to remove a fetus. Hysterotomy is usually performed only if other abortion procedures fail or if other abortion procedures are not appropriate. Hysterectomy is a procedure in which the uterus is removed (with the fetus inside). It is usually performed only when a pathological condition of the uterus, such as fibroid tumors, warrants its removal or when a woman desires sterilization.

Complications of Termination

Hemorrhage

A copious discharge of blood from the blood vessels

Infection

Invasion and multiplication of microorganisms in body tissues, especially that causing local cellular injury due to competitive metabolism, toxins, intracellular replication, or antigen-antibody response

Uterine Perforation

Perforation of the uterus

Cervical Laceration

Laceration of the cervix

Retained Products

Retained products of conception

Educational Materials

Was the patient provided the education materials as specified in Idaho Code § 18-609(4)? Education materials include information on induced termination, fetal development, and services for women, infants, and children in Idaho. Go to www.abortioninfo.dhw.idaho.gov for education materials provided to patients.

Clinical Estimate of Gestation

The length of gestation as estimated by the attending physician in completed menstrual weeks. This estimate is not computed from the date last normal menses began and date of termination. Clinical estimate of gestation is used for the length of gestation.

Postfertilization Age

Age calculated from the date of fertilization of the human ovum. The termination record does not collect the date of fertilization. Fertilization of the human ovum occurs approximately two weeks after the onset of menses. The postfertilization age is calculated to by the number of completed weeks' clinical estimate of gestation minus two weeks. For example, 20 weeks postfertilization is equal to 22 weeks' clinical estimate of gestation.

Method for Determining Gestational Age

The method used by the attendant in determining the reported weeks of gestation.

Ultrasound

Weeks of gestation were determined by an ultrasound procedure

Pelvic Exam

Weeks of gestation were determined by a pelvic examination procedure

Other, Specify

Indicate what method/procedure/evidence the attendant used to determine the weeks of gestation

None

A clinical estimate of gestation was not performed.

Race

Patient's race is a write-in category for one race. If race is written as "Hispanic", "Mexican", or "Latina", the patient's race is categorized as "white". If race is written as "other", "mixed race", or "multi race" the patient's race is categorized as "other".

Ethnicity

Patient's ethnicity is reported separately from race on the induced termination record. Ethnicity is reported as a check box of yes or no for the question "Of Hispanic origin?". If checked "yes", Hispanic origin is specified as Cuban, Mexican, Puerto Rican,

Costs associated with this publication are available from
Idaho Department of Health and Welfare.
HW-1206 March 2017