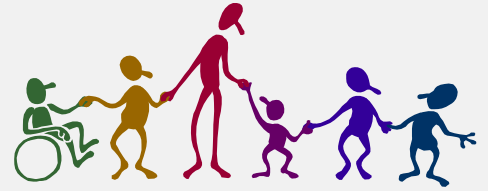


CERTIFIED FAMILY HOME PRIVATE PAY



PRIVATE PAY

- The resident is paying for care, room and board. Medicaid is not responsible for payment.
- You decide how much to charge each private pay resident.
- Assessment (UAI) and plan of care (NSA) are completed by the CFH provider.
- The UAI and NSA must be completed within fourteen days of admission.
- The UAI and NSA forms can be found at www.cfh.dhw.idaho.gov under forms.
- All Certified Family Home rules apply.