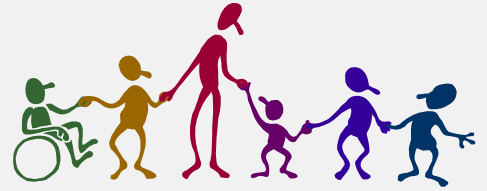


CERTIFIED FAMILY HOME RECRUITING A NEW RESIDENT



RECRUITING A NEW RESIDENT

Elderly People

- Hospital discharge planners and social workers
- Doctors
- Alzheimer's Association
- Notices in local senior newsletter
- Ads at local senior center
- Idaho Office on Aging
- Home health, personal care, or respite agencies
- Nursing home discharge planners
- Churches

People with a Developmental Disability

- Department of Health and Welfare
- Targeted Service Coordinator agencies
- Intermediate Care Facilities for the Mentally Retarded (ICF/MR)
- Private developmental disability centers

People with a Mental Illness

- Support groups
- Department of Health and Welfare
- Private treatment agencies